

INTERNATIONAL PACIFIC HALIBUT COMMISSION

**Pacific
Halibut Fishery
Regulations
2015**

INTERNATIONAL PACIFIC HALIBUT COMMISSION
2320 WEST COMMODORE WAY, SUITE 300
SEATTLE, WASHINGTON 98199-1287
PHONE: (206) 634-1838
FAX: (206) 632-2983
WEBSITE: www.iphc.int

This pamphlet is intended for informational purposes only. Official regulations of the respective countries can be found in:

For the U.S.: The Federal Register

For Canada: The Canada Gazette and the Condition of License

Contents

1. Short Title.....	3
2. Application.....	3
3. Definitions.....	3
4. Licensing Vessels for Area 2A.....	5
5. In-Season Actions.....	6
6. Regulatory Areas.....	6
7. Fishing in Regulatory Area 4E and 4D.....	7
8. Fishing Periods.....	7
9. Closed Periods.....	8
10. Closed Area.....	9
11. Catch Limits.....	9
12. Fishing Period Limits.....	10
13. Size Limits.....	11
14. Careful Release of Halibut.....	11
15. Vessel Clearance in Area 4.....	11
16. Logs.....	13
17. Receipt and Possession of Halibut.....	14
18. Fishing Multiple Regulatory Areas.....	16
19. Fishing Gear.....	16
20. Supervision of Unloading and Weighing.....	18
21. Retention of Tagged Halibut.....	18
22. Fishing by United States Treaty Indian Tribes.....	18
23. Customary and Traditional Fishing in Alaska.....	19
24. Aboriginal Groups Fishing for Food, Social and Ceremonial Purposes in British Columbia.....	19
25. Sport Fishing for Halibut—General.....	19
26. Sport Fishing for Halibut—Area 2A.....	19
27. Sport Fishing for Halibut—Area 2B.....	20
28. Sport Fishing for Halibut—Areas 2C, 3A, 3B, 4A, 4B, 4C, 4D, 4E.....	20
29. Previous Regulations Superseded.....	22
Synopsis of 2015 U.S. Sport Halibut Regulations for Washington, Oregon, and California (IPHC Area 2A).....	23
Synopsis of Selected IPHC, Canadian, and U.S. Sport Fishery Regulations for British Columbia and Alaskan areas (as of February 1, 2015).....	24
Figure 1. Regulatory areas for the Pacific halibut fishery.....	25
Figure 2. Minimum commercial size.....	25
Figure 3. Recreational size limit for halibut in Regulatory Area 2C.....	26
Figure 4. Recreational size limit for halibut in Regulatory Area 3A.....	26
Reward Offered for all Recovered Tags.....	27
\$1500 Reward for the Recovery of Oceanographic Instruments.....	27
2 IPHC Solicits Applications for Merit Scholarship.....	27

REGULATIONS RESPECTING THE CONVENTION BETWEEN
CANADA AND THE UNITED STATES OF AMERICA FOR THE
PRESERVATION OF THE HALIBUT FISHERY OF THE NORTHERN
PACIFIC OCEAN AND BERING SEA

1. Short Title

These Regulations may be cited as the Pacific Halibut Fishery Regulations.

2. Application

- (1) These Regulations apply to persons and vessels fishing for halibut in, or possessing halibut taken from, the maritime area as defined in Section 3.
- (2) Sections 3 to 6 apply generally to all halibut fishing.
- (3) Sections 7 to 20 apply to commercial fishing for halibut.
- (4) Section 21 applies to tagged halibut caught by any vessel.
- (5) Section 22 applies to the United States treaty Indian fishery in Subarea 2A-1.
- (6) Section 23 applies to customary and traditional fishing in Alaska.
- (7) Section 24 applies to Aboriginal groups fishing for food, social and ceremonial purposes in British Columbia.
- (8) Sections 25 to 28 apply to sport fishing for halibut.
- (9) These Regulations do not apply to fishing operations authorized or conducted by the Commission for research purposes.

3. Definitions

- (1) In these Regulations,
 - (a) “authorized officer” means any State, Federal, or Provincial officer authorized to enforce these Regulations including, but not limited to, the National Marine Fisheries Service (NMFS), Canada’s Department of Fisheries and Oceans (DFO), Alaska Wildlife Troopers (AWT), United States Coast Guard (USCG), Washington Department of Fish and Wildlife (WDFW), the Oregon State Police (OSP), and California Department of Fish and Wildlife (CDFW);
 - (b) “authorized clearance personnel” means an authorized officer of the United States, a representative of the Commission, or a designated fish processor;
 - (c) “charter vessel” outside of Alaska waters means a vessel used for hire in sport fishing for halibut, but not including a vessel without a hired operator, and in Alaska waters means a vessel used while providing or receiving sport fishing guide services for halibut;
 - (d) “commercial fishing” means fishing, the resulting catch of which is sold or bartered; or is intended to be sold or bartered, other than i) sport fishing, ii) treaty Indian ceremonial and subsistence fishing as referred to in section 22, iii) customary and traditional fishing as referred to in section 23 and defined by and regulated pursuant to NMFS regulations

PACIFIC HALIBUT FISHERY REGULATIONS 2015

published at 50 CFR Part 300, and iv) Aboriginal groups fishing in British Columbia as referred to in section 24;

- (e) “Commission” means the International Pacific Halibut Commission;
- (f) “daily bag limit” means the maximum number of halibut a person may take in any calendar day from Convention waters;
- (g) “fishing” means the taking, harvesting, or catching of fish, or any activity that can reasonably be expected to result in the taking, harvesting, or catching of fish, including specifically the deployment of any amount or component part of setline gear anywhere in the maritime area;
- (h) “fishing period limit” means the maximum amount of halibut that may be retained and landed by a vessel during one fishing period;
- (i) “land” or “offload” with respect to halibut, means the removal of halibut from the catching vessel;
- (j) “license” means a halibut fishing license issued by the Commission pursuant to section 4;
- (k) “maritime area”, in respect of the fisheries jurisdiction of a Contracting Party, includes without distinction areas within and seaward of the territorial sea and internal waters of that Party;
- (l) “net weight” of a halibut means the weight of halibut that is without gills and entrails, head-off, washed, and without ice and slime. If a halibut is weighed with the head on or with ice and slime, the required conversion factors for calculating net weight are a 2 percent deduction for ice and slime and a 10 percent deduction for the head;
- (m) “operator”, with respect to any vessel, means the owner and/or the master or other individual on board and in charge of that vessel;
- (n) “overall length” of a vessel means the horizontal distance, rounded to the nearest foot, between the foremost part of the stem and the aftermost part of the stern (excluding bowsprits, rudders, outboard motor brackets, and similar fittings or attachments);
- (o) “person” includes an individual, corporation, firm, or association;
- (p) “regulatory area” means an area referred to in section 6;
- (q) “setline gear” means one or more stationary, buoyed, and anchored lines with hooks attached;
- (r) “sport fishing” means all fishing other than i) commercial fishing, ii) treaty Indian ceremonial and subsistence fishing as referred to in section 22, iii) customary and traditional fishing as referred to in section 23 and defined in and regulated pursuant to NMFS regulations published in 50 CFR Part 300, and iv) Aboriginal groups fishing in British Columbia as referred to in section 24;
- (s) “tender” means any vessel that buys or obtains fish directly from a catching vessel and transports it to a port of landing or fish processor;
- (t) “VMS transmitter” means a NMFS-approved vessel monitoring system transmitter that automatically determines a vessel’s position and transmits it to a NMFS-approved communications service provider.¹

- (2) In these Regulations, all bearings are true and all positions are determined by the most recent charts issued by the United States National Ocean Service or the Canadian Hydrographic Service.

¹ Call NOAA Enforcement Division, Alaska Region, at 907-586-7225 between the hours of 0800 and 1600 local time for a list of NMFS-approved VMS transmitters and communications service providers.

4. Licensing Vessels for Area 2A

- (1) No person shall fish for halibut from a vessel, nor possess halibut on board a vessel, used either for commercial fishing or as a charter vessel in Area 2A, unless the Commission has issued a license valid for fishing in Area 2A in respect of that vessel.
- (2) A license issued for a vessel operating in Area 2A shall be valid only for operating either as a charter vessel or a commercial vessel, but not both.
- (3) A vessel with a valid Area 2A commercial license cannot be used to sport fish for Pacific halibut in Area 2A.
- (4) A license issued for a vessel operating in the commercial fishery in Area 2A shall be valid for one of the following:
 - (a) the directed commercial fishery during the fishing periods specified in paragraph (2) of section 8;
 - (b) the incidental catch fishery during the sablefish fishery specified in paragraph (3) of section 8; or
 - (c) the incidental catch fishery during the salmon troll fishery specified in paragraph (4) of section 8.
- (5) No person may apply for or be issued a license for a vessel operating in the incidental catch fishery during the salmon troll fishery in paragraph (4)(c), if that vessel was previously issued a license for either the directed commercial fishery in paragraph (4)(a) or the incidental catch fishery during the sablefish fishery in paragraph (4)(b).
- (6) A license issued in respect to a vessel referred to in paragraph (1) of this section must be carried on board that vessel at all times and the vessel operator shall permit its inspection by any authorized officer.
- (7) The Commission shall issue a license in respect to a vessel, without fee, from its office in Seattle, Washington, upon receipt of a completed, written, and signed “Application for Vessel License for the Halibut Fishery” form.
- (8) A vessel operating in the directed commercial fishery in Area 2A must have its “Application for Vessel License for the Halibut Fishery” form postmarked no later than 11:59 PM on April 30, or on the first weekday in May if April 30 is a Saturday or Sunday.
- (9) A vessel operating in the incidental catch fishery during the sablefish fishery in Area 2A must have its “Application for Vessel License for the Halibut Fishery” form postmarked no later than 11:59 PM on March 15, or the next weekday in March if March 15 is a Saturday or Sunday.
- (10) A vessel operating in the incidental catch fishery during the salmon troll fishery in Area 2A must have its “Application for Vessel License for the Halibut Fishery” form postmarked no later than 11:59 PM on March 15, or the next weekday in March if March 15 is a Saturday or Sunday.
- (11) Application forms may be obtained from any authorized officer or from the Commission.

- (12) Information on “Application for Vessel License for the Halibut Fishery” form must be accurate.
- (13) The “Application for Vessel License for the Halibut Fishery” form shall be completed and signed by the vessel owner.
- (14) Licenses issued under this section shall be valid only during the year in which they are issued.
- (15) A new license is required for a vessel that is sold, transferred, renamed, or the documentation is changed.
- (16) The license required under this section is in addition to any license, however designated, that is required under the laws of the United States or any of its States.
- (17) The United States may suspend, revoke, or modify any license issued under this section under policies and procedures in Title 15, CFR Part 904.

5. In-Season Actions

- (1) The Commission is authorized to establish or modify regulations during the season after determining that such action:
 - (a) will not result in exceeding the catch limit established preseason for each regulatory area;
 - (b) is consistent with the Convention between Canada and the United States of America for the Preservation of the Halibut Fishery of the Northern Pacific Ocean and Bering Sea, and applicable domestic law of either Canada or the United States; and
 - (c) is consistent, to the maximum extent practicable, with any domestic catch sharing plans or other domestic allocation programs developed by the United States or Canadian governments.
- (2) In-season actions may include, but are not limited to, establishment or modification of the following:
 - (a) closed areas;
 - (b) fishing periods;
 - (c) fishing period limits;
 - (d) gear restrictions;
 - (e) recreational bag limits;
 - (f) size limits; or
 - (g) vessel clearances.
- (3) In-season changes will be effective at the time and date specified by the Commission.
- (4) The Commission will announce in-season actions under this section by providing notice to major halibut processors; Federal, State, United States treaty Indian, and Provincial fishery officials; and the media.

6. Regulatory Areas

The following areas shall be regulatory areas (see Figure 1) for the purposes of the Convention:

PACIFIC HALIBUT FISHERY REGULATIONS 2015

- (1) Area 2A includes all waters off the states of California, Oregon, and Washington;
- (2) Area 2B includes all waters off British Columbia;
- (3) Area 2C includes all waters off Alaska that are east of a line running 340° true from Cape Spencer Light (58°11'56'' N. latitude, 136°38'26'' W. longitude) and south and east of a line running 205° true from said light;
- (4) Area 3A includes all waters between Area 2C and a line extending from the most northerly point on Cape Aklek (57°41'15'' N. latitude, 155°35'00'' W. longitude) to Cape Ikolik (57°17'17'' N. latitude, 154°47'18'' W. longitude), then along the Kodiak Island coastline to Cape Trinity (56°44'50'' N. latitude, 154°08'44'' W. longitude), then 140° true;
- (5) Area 3B includes all waters between Area 3A and a line extending 150° true from Cape Lutke (54°29'00'' N. latitude, 164°20'00'' W. longitude) and south of 54°49'00'' N. latitude in Isanotski Strait;
- (6) Area 4A includes all waters in the Gulf of Alaska west of Area 3B and in the Bering Sea west of the closed area defined in section 10 that are east of 172°00'00'' W. longitude and south of 56°20'00'' N. latitude;
- (7) Area 4B includes all waters in the Bering Sea and the Gulf of Alaska west of Area 4A and south of 56°20'00'' N. latitude;
- (8) Area 4C includes all waters in the Bering Sea north of Area 4A and north of the closed area defined in section 10 which are east of 171°00'00'' W. longitude, south of 58°00'00'' N. latitude, and west of 168°00'00'' W. longitude;
- (9) Area 4D includes all waters in the Bering Sea north of Areas 4A and 4B, north and west of Area 4C, and west of 168°00'00'' W. longitude; and
- (10) Area 4E includes all waters in the Bering Sea north and east of the closed area defined in section 10, east of 168°00'00'' W. longitude, and south of 65°34'00'' N. latitude.

7. Fishing in Regulatory Area 4E and 4D

- (1) Section 7 applies only to any person fishing, or vessel that is used to fish for, Area 4E Community Development Quota (CDQ) or Area 4D CDQ halibut provided that the total annual halibut catch of that person or vessel is landed at a port within Area 4E or 4D.
- (2) A person may retain halibut taken with setline gear in the Area 4E CDQ and 4D CDQ fishery that are smaller than the size limit specified in section 13, provided that no person may sell or barter such halibut.
- (3) The manager of a CDQ organization that authorizes persons to harvest halibut in the Area 4E or 4D CDQ fisheries must report to the Commission the total number and weight of undersized halibut taken and retained by such persons pursuant to section 7, paragraph (2). This report, which shall include data and methodology used to collect the data, must be received by the Commission prior to November 1 of the year in which such halibut were harvested.

8. Fishing Periods

- (1) The fishing periods for each regulatory area apply where the catch limits specified in section 11 have not been taken.

PACIFIC HALIBUT FISHERY REGULATIONS 2015

- (2) Each fishing period in the Area 2A directed commercial fishery² shall begin at 0800 hours and terminate at 1800 hours local time on June 24, July 8, July 22, August 5, August 19, September 2, and September 16 unless the Commission specifies otherwise.
- (3) Notwithstanding paragraph (7) of section 11, an incidental catch fishery³ is authorized during the sablefish seasons in Area 2A in accordance with regulations promulgated by NMFS. This fishery will occur between 1200 hours local time on March 14 and 1200 hours local time on November 7.
- (4) Notwithstanding paragraph (2), and paragraph (7) of section 11, an incidental catch fishery is authorized during salmon troll seasons in Area 2A in accordance with regulations promulgated by NMFS. This fishery will occur between 1200 hours local time on March 14 and 1200 hours local time on November 7.
- (5) The fishing period in Areas 2B, 2C, 3A, 3B, 4A, 4B, 4C, 4D, and 4E shall begin at 1200 hours local time on March 14 and terminate at 1200 hours local time on November 7, unless the Commission specifies otherwise.
- (6) All commercial fishing for halibut in Areas 2A, 2B, 2C, 3A, 3B, 4A, 4B, 4C, 4D, and 4E shall cease at 1200 hours local time on November 7.

²The directed fishery is restricted to waters that are south of Point Chehalis, Washington (46°53'18" N. latitude) under regulations promulgated by NMFS and published in the [Federal Register](#).

³The incidental fishery during the directed, fixed gear sablefish season is restricted to waters that are north of Point Chehalis, Washington (46°53'18" N. latitude) under regulations promulgated by NMFS at CFR 300.63. Landing restrictions for halibut retention in the fixed gear sablefish fishery can be found at CFR 660.231.

9. Closed Periods

- (1) No person shall engage in fishing for halibut in any regulatory area other than during the fishing periods set out in section 8 in respect of that area.
- (2) No person shall land or otherwise retain halibut caught outside a fishing period applicable to the regulatory area where the halibut was taken.
- (3) Subject to paragraphs (7), (8), (9), and (10) of section 19, these Regulations do not prohibit fishing for any species of fish other than halibut during the closed periods.
- (4) Notwithstanding paragraph (3), no person shall have halibut in his/her possession while fishing for any other species of fish during the closed periods.
- (5) No vessel shall retrieve any halibut fishing gear during a closed period if the vessel has any halibut on board.
- (6) A vessel that has no halibut on board may retrieve any halibut fishing gear during the closed period after the operator notifies an authorized officer or representative of the Commission prior to that retrieval.
- (7) After retrieval of halibut gear in accordance with paragraph (6), the vessel shall submit to a hold inspection at the discretion of the authorized officer or representative of the Commission.
- (8) No person shall retain any halibut caught on gear retrieved in accordance with paragraph (6).
- (9) No person shall possess halibut on board a vessel in a regulatory area during a closed period unless that vessel is in continuous transit to or within a port in which that halibut may be lawfully sold.

10. Closed Area

All waters in the Bering Sea north of 55°00'00'' N. latitude in Isanotski Strait that are enclosed by a line from Cape Sarichef Light (54°36'00'' N. latitude, 164°55'42'' W. longitude) to a point at 56°20'00'' N. latitude, 168°30'00'' W. longitude; thence to a point at 58°21'25'' N. latitude, 163°00'00'' W. longitude; thence to Strogonof Point (56°53'18'' N. latitude, 158°50'37'' W. longitude); and then along the northern coasts of the Alaska Peninsula and Unimak Island to the point of origin at Cape Sarichef Light are closed to halibut fishing and no person shall fish for halibut therein or have halibut in his/her possession while in those waters except in the course of a continuous transit across those waters. All waters in Isanotski Strait between 55°00'00'' N. latitude and 54°49'00'' N. latitude are closed to halibut fishing.

11. Catch Limits

- (1) The total allowable catch of halibut to be taken during the halibut fishing periods specified in section 8 shall be limited to the net weights expressed in pounds or metric tons shown in the following table:

Regulatory Area	Catch Limit - net weight	
	Pounds	Metric tons
2A: directed commercial, and incidental commercial catch during salmon troll fishery	193,564	87.8
2A: incidental commercial during sablefish fishery	10,347	4.7
2B ⁴	7,038,000	3,192.4
2C ⁵	3,679,000	1,668.8
3A ⁶	7,790,000	3,533.5
3B	2,650,000	1,202.0
4A	1,390,000	630.5
4B	1,140,000	517.1
4C	596,600	270.6
4D	596,600	270.6
4E	91,800	41.6

- (2) Notwithstanding paragraph (1), regulations pertaining to the division of the Area 2A catch limit between the directed commercial fishery and the incidental catch fishery as described in paragraph (4) of section 8 will be promulgated by NMFS and published in the Federal Register.
- (3) The Commission shall determine and announce to the public the date on which the catch limit for Area 2A will be taken.
- (4) Notwithstanding paragraph (1), the commercial fishing in Area 2B will close only when all Individual Vessel Quotas (IVQs) assigned by DFO are taken, or November 7, whichever is earlier.

- (5) Notwithstanding paragraph (1), Areas 2C, 3A, 3B, 4A, 4B, 4C, 4D, and 4E will each close only when all Individual Fishing Quotas (IFQ) and all CDQs issued by NMFS have been taken, or November 7, whichever is earlier.
- (6) If the Commission determines that the catch limit specified for Area 2A in paragraph (1) would be exceeded in an unrestricted 10-hour fishing period as specified in paragraph (2) of section 8, the catch limit for that area shall be considered to have been taken unless fishing period limits are implemented.
- (7) When under paragraphs (2), (3), and (6) the Commission has announced a date on which the catch limit for Area 2A will be taken, no person shall fish for halibut in that area after that date for the rest of the year, unless the Commission has announced the reopening of that area for halibut fishing.
- (8) Notwithstanding paragraph (1), the total allowable catch of halibut that may be taken in the Area 4E directed commercial fishery is equal to the combined annual catch limits specified for the Area 4D and Area 4E CDQ fisheries. The annual Area 4D CDQ catch limit will decrease by the equivalent amount of halibut CDQ taken in Area 4E in excess of the annual Area 4E CDQ catch limit.
- (9) Notwithstanding paragraph (1), the total allowable catch of halibut that may be taken in the Area 4D directed commercial fishery is equal to the combined annual catch limits specified for Area 4C and Area 4D. The annual Area 4C catch limit will decrease by the equivalent amount of halibut taken in Area 4D in excess of the annual Area 4D catch limit.

⁴Area 2B includes combined commercial and sport catch limits which will be allocated by DFO. See section 27 for sport fishing regulations.

⁵ For the commercial fishery in Area 2C, in addition to the catch limit, the estimate of incidental mortality from the commercial fishery is 120,000 pounds. This amount is included in the combined commercial and guided sport sector catch limit set by IPHC and allocated by NMFS by a catch sharing plan.

⁶ For the commercial fishery in Area 3A, in addition to the catch limit, the estimate of incidental mortality from the commercial fishery is 420,000 pounds. This amount is included in the combined commercial and guided sport sector catch limit set by IPHC and allocated by NMFS by a catch sharing plan.

12. Fishing Period Limits

- (1) It shall be unlawful for any vessel to retain more halibut than authorized by that vessel's license in any fishing period for which the Commission has announced a fishing period limit.
- (2) The operator of any vessel that fishes for halibut during a fishing period when fishing period limits are in effect must, upon commencing an offload of halibut to a commercial fish processor, completely offload all halibut on board said vessel to that processor and ensure that all halibut is weighed and reported on State fish tickets.
- (3) The operator of any vessel that fishes for halibut during a fishing period when fishing period limits are in effect must, upon commencing an offload of halibut other than to a commercial fish processor, completely offload all halibut on board said vessel and ensure that all halibut are weighed and reported on State fish tickets.
- (4) The provisions of paragraph (3) are not intended to prevent retail over-the-side sales to individual purchasers so long as all the halibut on board is ultimately offloaded and reported.
- (5) When fishing period limits are in effect, a vessel's maximum retainable catch will be determined by the Commission based on:
 - (a) the vessel's overall length in feet and associated length class;

- (b) the average performance of all vessels within that class; and
 - (c) the remaining catch limit.
- (6) Length classes are shown in the following table:
- | <u>Overall Length (in feet)</u> | <u>Vessel Class</u> |
|---------------------------------|---------------------|
| 1-25 | A |
| 26-30 | B |
| 31-35 | C |
| 36-40 | D |
| 41-45 | E |
| 46-50 | F |
| 51-55 | G |
| 56+ | H |
- (7) Fishing period limits in Area 2A apply only to the directed halibut fishery referred to in paragraph (2) of section 8.

13. Size Limits

- (1) No person shall take or possess any halibut that:
 - (a) with the head on, is less than 32 inches (81.3 cm) as measured in a straight line, passing over the pectoral fin from the tip of the lower jaw with the mouth closed, to the extreme end of the middle of the tail, as illustrated in Figure 2; or
 - (b) with the head removed, is less than 24 inches (61.0 cm) as measured from the base of the pectoral fin at its most anterior point to the extreme end of the middle of the tail, as illustrated in Figure 2.
- (2) No person on board a vessel fishing for, or tendering, halibut caught in Area 2A shall possess any halibut that has had its head removed.

14. Careful Release of Halibut

- (1) All halibut that are caught and are not retained shall be immediately released outboard of the roller and returned to the sea with a minimum of injury by:
 - (a) hook straightening;
 - (b) cutting the gangion near the hook; or
 - (c) carefully removing the hook by twisting it from the halibut with a gaff.
- (2) Except that paragraph (1) shall not prohibit the possession of halibut on board a vessel that has been brought aboard to be measured to determine if the minimum size limit of the halibut is met and, if sublegal-sized, is promptly returned to the sea with a minimum of injury.

15. Vessel Clearance in Area 4

- (1) The operator of any vessel that fishes for halibut in Areas 4A, 4B, 4C, or 4D must obtain a vessel clearance before fishing in any of these areas, and before the landing of any halibut caught in any of these areas, unless specifically exempted in paragraphs (10), (13), (14), (15), or (16).

PACIFIC HALIBUT FISHERY REGULATIONS 2015

- (2) An operator obtaining a vessel clearance required by paragraph (1) must obtain the clearance in person from the authorized clearance personnel and sign the IPHC form documenting that a clearance was obtained, except that when the clearance is obtained via VHF radio referred to in paragraphs (5), (8), and (9), the authorized clearance personnel must sign the IPHC form documenting that the clearance was obtained.
- (3) The vessel clearance required under paragraph (1) prior to fishing in Area 4A may be obtained only at Nazan Bay on Atka Island, Dutch Harbor or Akutan, Alaska, from an authorized officer of the United States, a representative of the Commission, or a designated fish processor.
- (4) The vessel clearance required under paragraph (1) prior to fishing in Area 4B may only be obtained at Nazan Bay on Atka Island or Adak, Alaska, from an authorized officer of the United States, a representative of the Commission, or a designated fish processor.
- (5) The vessel clearance required under paragraph (1) prior to fishing in Area 4C or 4D may be obtained only at St. Paul or St. George, Alaska, from an authorized officer of the United States, a representative of the Commission, or a designated fish processor by VHF radio and allowing the person contacted to confirm visually the identity of the vessel.
- (6) The vessel operator shall specify the specific regulatory area in which fishing will take place.
- (7) Before unloading any halibut caught in Area 4A, a vessel operator may obtain the clearance required under paragraph (1) only in Dutch Harbor or Akutan, Alaska, by contacting an authorized officer of the United States, a representative of the Commission, or a designated fish processor.
- (8) Before unloading any halibut caught in Area 4B, a vessel operator may obtain the clearance required under paragraph (1) only in Nazan Bay on Atka Island or Adak, by contacting an authorized officer of the United States, a representative of the Commission, or a designated fish processor by VHF radio or in person.
- (9) Before unloading any halibut caught in Area 4C and 4D, a vessel operator may obtain the clearance required under paragraph (1) only in St. Paul, St. George, Dutch Harbor, or Akutan, Alaska, either in person or by contacting an authorized officer of the United States, a representative of the Commission, or a designated fish processor. The clearances obtained in St. Paul or St. George, Alaska, can be obtained by VHF radio and allowing the person contacted to confirm visually the identity of the vessel.
- (10) Any vessel operator who complies with the requirements in section 18 for possessing halibut on board a vessel that was caught in more than one regulatory area in Area 4 is exempt from the clearance requirements of paragraph (1) of this section, provided that:
 - (a) the operator of the vessel obtains a vessel clearance prior to fishing in Area 4 in either Dutch Harbor, Akutan, St. Paul, St. George, Adak, or Nazan Bay on Atka Island by contacting an authorized officer of the United States, a representative of the Commission, or a designated fish processor. The clearance obtained in St. Paul, St. George, Adak, or Nazan Bay on Atka Island can be obtained by VHF radio and allowing the person contacted to confirm visually the identity of the vessel. This clearance will list the areas in which the vessel will fish; and
 - (b) before unloading any halibut from Area 4, the vessel operator obtains a vessel clearance from Dutch Harbor, Akutan, St. Paul, St. George, Adak, or Nazan Bay on Atka Island by contacting an authorized officer of the United States, a representative of the Commission, or a designated fish processor. The clearance obtained in St. Paul or St. George can be obtained by VHF radio and allowing the person contacted to confirm visually the identity

of the vessel. The clearance obtained in Adak or Nazan Bay on Atka Island can be obtained by VHF radio.

- (11) Vessel clearances shall be obtained between 0600 and 1800 hours, local time.
- (12) No halibut shall be on board the vessel at the time of the clearances required prior to fishing in Area 4.
- (13) Any vessel that is used to fish for halibut only in Area 4A and lands its total annual halibut catch at a port within Area 4A is exempt from the clearance requirements of paragraph (1).
- (14) Any vessel that is used to fish for halibut only in Area 4B and lands its total annual halibut catch at a port within Area 4B is exempt from the clearance requirements of paragraph (1).
- (15) Any vessel that is used to fish for halibut only in Area 4C or 4D or 4E and lands its total annual halibut catch at a port within Area 4C, 4D, 4E, or the closed area defined in section 10, is exempt from the clearance requirements of paragraph (1).
- (16) Any vessel that carries a transmitting VMS transmitter while fishing for halibut in Area 4A, 4B, 4C, or 4D and until all halibut caught in any of these areas is landed, is exempt from the clearance requirements of paragraph (1) of this section, provided that:
 - (a) the operator of the vessel complies with NMFS' vessel monitoring system regulations published at 50 CFR 679.28(f)(3), (4) and (5); and
 - (b) the operator of the vessel notifies NOAA Fisheries Office for Law Enforcement at 800-304-4846 (select option 1 to speak to an Enforcement Data Clerk) between the hours of 0600 and 0000 (midnight) local time within 72 hours before fishing for halibut in Area 4A, 4B, 4C, or 4D and receives a VMS confirmation number.

16. Logs

- (1) The operator of any U.S. vessel fishing for halibut that has an overall length of 26 feet (7.9 meters) or greater shall maintain an accurate log of halibut fishing operations. The operator of a vessel fishing in waters in and off Alaska must use one of the following logbooks: the Groundfish/IFQ Daily Fishing Longline and Pot Gear Logbook provided by NMFS; the Alaska hook-and-line logbook provided by Petersburg Vessel Owners Association or Alaska Longline Fisherman's Association; the Alaska Department of Fish and Game (ADF&G) longline-pot logbook; or the logbook provided by IPHC. The operator of a vessel fishing in Area 2A must use either the WDFW Voluntary Sablefish Logbook, Oregon Department of Fish and Wildlife (ODFW) Fixed Gear Logbook, or the logbook provided by IPHC.
- (2) The logbook referred to in paragraph (1) must include the following information:
 - (a) the name of the vessel and the State (ADF&G, WDFW, ODFW, or CDFW) or Tribal vessel number;
 - (b) the date(s) upon which the fishing gear is set or retrieved;
 - (c) the latitude and longitude coordinates or a direction and distance from a point of land for each set or day;
 - (d) the number of skates deployed or retrieved, and number of skates lost; and
 - (e) the total weight or number of halibut retained for each set or day.

- (3) The logbook referred to in paragraph (1) shall be:
 - (a) maintained on board the vessel;
 - (b) updated not later than 24 hours after 0000 (midnight) local time for each day fished and prior to the offloading or sale of halibut taken during that fishing trip;
 - (c) retained for a period of two years by the owner or operator of the vessel;
 - (d) open to inspection by an authorized officer or any authorized representative of the Commission upon demand; and
 - (e) kept on board the vessel when engaged in halibut fishing, during transits to port of landing, and until the offloading of all halibut is completed.
- (4) The log referred to in paragraph (1) does not apply to the incidental halibut fishery during the salmon troll season in Area 2A defined in paragraph (4) of section 8.
- (5) The operator of any Canadian vessel fishing for halibut shall maintain an accurate log recorded in the British Columbia Integrated Groundfish Fishing Log provided by DFO.
- (6) The logbook referred to in paragraph (5) must include the following information:
 - (a) the name of the vessel and the DFO vessel registration number;
 - (b) the date(s) upon which the fishing gear is set and retrieved;
 - (c) the latitude and longitude coordinates for each set;
 - (d) the number of skates deployed or retrieved, and number of skates lost; and
 - (e) the total weight or number of halibut retained for each set.
- (7) The logbook referred to in paragraph (5) shall be:
 - (a) maintained on board the vessel;
 - (b) retained for a period of two years by the owner or operator of the vessel;
 - (c) open to inspection by an authorized officer or any authorized representative of the Commission upon demand;
 - (d) kept on board the vessel when engaged in halibut fishing, during transits to port of landing, and until the offloading of all halibut is completed;
 - (e) mailed to the DFO (white copy) within seven days of offloading; and
 - (f) mailed to the Commission (yellow copy) within seven days of the final offload if not collected by a Commission employee.
- (8) No person shall make a false entry in a log referred to in this section.

17. Receipt and Possession of Halibut

- (1) No person shall receive halibut caught in Area 2A from a United States vessel that does not have on board the license required by section 4.
- (2) No person shall possess on board a vessel a halibut other than whole or with gills and entrails removed, except that this paragraph shall not prohibit the possession on board a vessel of:

PACIFIC HALIBUT FISHERY REGULATIONS 2015

- (a) halibut cheeks cut from halibut caught by persons authorized to process the halibut on board in accordance with NMFS regulations published at 50 CFR Part 679;
 - (b) fillets from halibut offloaded in accordance with section 17 that are possessed on board the harvesting vessel in the port of landing up to 1800 hours local time on the calendar day following the offload⁷; and
 - (c) halibut with their heads removed in accordance with section 13.
- (3) No person shall offload halibut from a vessel unless the gills and entrails have been removed prior to offloading⁸.
 - (4) It shall be the responsibility of a vessel operator who lands halibut to continuously and completely offload at a single offload site all halibut on board the vessel.
 - (5) A registered buyer (as that term is defined in regulations promulgated by NMFS and codified at 50 CFR Part 679) who receives halibut harvested in IFQ and CDQ fisheries in Areas 2C, 3A, 3B, 4A, 4B, 4C, 4D, and 4E, directly from the vessel operator that harvested such halibut must weigh all the halibut received and record the following information on Federal catch reports: date of offload; name of vessel; vessel number (State, Tribal or Federal, not IPHC vessel number); scale weight obtained at the time of offloading, including the scale weight (in pounds) of halibut purchased by the registered buyer, the scale weight (in pounds) of halibut offloaded in excess of the IFQ or CDQ, the scale weight of halibut (in pounds) retained for personal use or for future sale, and the scale weight (in pounds) of halibut discarded as unfit for human consumption.
 - (6) The first recipient, commercial fish processor, or buyer in the United States who purchases or receives halibut directly from the vessel operator that harvested such halibut must weigh and record all halibut received and record the following information on State fish tickets: the date of offload; vessel number (State, Tribal or Federal, not IPHC vessel number); total weight obtained at the time of offload including the weight (in pounds) of halibut purchased; the weight (in pounds) of halibut offloaded in excess of the IFQ, CDQ, or fishing period limits; the weight of halibut (in pounds) retained for personal use or for future sale; and the weight (in pounds) of halibut discarded as unfit for human consumption.
 - (7) The individual completing the State fish tickets for the Area 2A fisheries as referred to in paragraph (6) must additionally record whether the halibut weight is of head-on or head-off fish.
 - (8) For halibut landings made in Alaska, the requirements as listed in paragraph (5) and (6) can be met by recording the information in the Interagency Electronic Reporting Systems, eLandings in accordance with NMFS regulation published at 50 CFR Part 679.
 - (9) The master or operator of a Canadian vessel that was engaged in halibut fishing must weigh and record all halibut on board said vessel at the time offloading commences and record on Provincial fish tickets or Federal catch reports the date; locality; name of vessel; the name(s) of the person(s) from whom the halibut was purchased; and the scale weight obtained at the time of offloading of all halibut on board the vessel including the pounds purchased, pounds in excess of IVQs, pounds retained for personal use, and pounds discarded as unfit for human consumption.
 - (10) No person shall make a false entry on a State or Provincial fish ticket or a Federal catch or landing report referred to in paragraphs (5), (6), and (9) of section 17.
 - (11) A copy of the fish tickets or catch reports referred to in paragraphs (5), (6), and (9) shall be:
 - (a) retained by the person making them for a period of three years from the date the fish tickets or catch reports are made; and

- (b) open to inspection by an authorized officer or any authorized representative of the Commission.
 - (12) No person shall possess any halibut taken or retained in contravention of these Regulations.
 - (13) When halibut are landed to other than a commercial fish processor, the records required by paragraph (6) shall be maintained by the operator of the vessel from which that halibut was caught, in compliance with paragraph (11).
 - (14) No person shall tag halibut unless the tagging is authorized by IPHC permit or by a Federal or State agency.
- ⁷ DFO has more restrictive regulations; therefore, section 17 paragraph (2)(b) does not apply to fish caught in Area 2B or landed in British Columbia.
- ⁸ DFO did not adopt this regulation; therefore, section 17 paragraph (3) does not apply to fish caught in Area 2B.

18. Fishing Multiple Regulatory Areas

- (1) Except as provided in this section, no person shall possess at the same time on board a vessel halibut caught in more than one regulatory area.
- (2) Halibut caught in more than one of the Regulatory Areas 2C, 3A, or 3B may be possessed on board a vessel at the same time provided the operator of the vessel:
 - (a) has a NMFS-certified observer on board when required by NMFS regulations⁹ published at 50 CFR Section 679.7(f)(4); and
 - (b) can identify the regulatory area in which each halibut on board was caught by separating halibut from different areas in the hold, tagging halibut, or by other means.
- (3) Halibut caught in more than one of the Regulatory Areas 4A, 4B, 4C, or 4D may be possessed on board a vessel at the same time provided the operator of the vessel:
 - (a) has a NMFS-certified observer on board the vessel as required by NMFS regulations published at 50 CFR Section 679.7(f)(4); or has an operational VMS on board actively transmitting in all regulatory areas fished and does not possess at any time more halibut on board the vessel than the IFQ permit holders on board the vessel have cumulatively available for any single Area 4 regulatory area fished; and
 - (b) can identify the regulatory area in which each halibut on board was caught by separating halibut from different areas in the hold, tagging halibut, or by other means.
- (4) If halibut from Area 4 are on board the vessel, the vessel can have halibut caught in Regulatory Areas 2C, 3A, and 3B on board if in compliance with paragraph (2).

⁹ Without an observer, a vessel cannot have on board more halibut than the IFQ for the area that is being fished, even if some of the catch occurred earlier in a different area.

19. Fishing Gear

- (1) No person shall fish for halibut using any gear other than hook and line gear, except that vessels licensed to catch sablefish in Area 2B using sablefish trap gear as defined in the Condition of Sablefish Licence can retain halibut caught as bycatch under regulations promulgated by DFO.
- (2) No person shall possess halibut taken with any gear other than hook and line gear, except that vessels licensed to catch sablefish in Area 2B using sablefish trap gear as defined by the Condition of Sablefish Licence can retain halibut caught as bycatch under regulations promulgated by DFO.

PACIFIC HALIBUT FISHERY REGULATIONS 2015

- (3) No person shall possess halibut while on board a vessel carrying any trawl nets or fishing pots capable of catching halibut, except that in Areas 2C, 3A, 3B, 4A, 4B, 4C, 4D, or 4E, halibut heads, skin, entrails, bones or fins for use as bait may be possessed on board a vessel carrying pots capable of catching halibut, provided that a receipt documenting purchase or transfer of these halibut parts is on board the vessel.
- (4) All setline or skate marker buoys carried on board or used by any United States vessel used for halibut fishing shall be marked with one of the following:
 - (a) the vessel's State license number; or
 - (b) the vessel's registration number.
- (5) The markings specified in paragraph (4) shall be in characters at least four inches in height and one-half inch in width in a contrasting color visible above the water and shall be maintained in legible condition.
- (6) All setline or skate marker buoys carried on board or used by a Canadian vessel used for halibut fishing shall be:
 - (a) floating and visible on the surface of the water; and
 - (b) legibly marked with the identification plate number of the vessel engaged in commercial fishing from which that setline is being operated.
- (7) No person on board a vessel used to fish for any species of fish anywhere in Area 2A during the 72-hour period immediately before the fishing period for the directed commercial fishery shall catch or possess halibut anywhere in those waters during that halibut fishing period unless, prior to the start of the halibut fishing period, the vessel has removed its gear from the water and has either:
 - (a) made a landing and completely offloaded its catch of other fish; or
 - (b) submitted to a hold inspection by an authorized officer.
- (8) No vessel used to fish for any species of fish anywhere in Area 2A during the 72-hour period immediately before the fishing period for the directed commercial fishery may be used to catch or possess halibut anywhere in those waters during that halibut fishing period unless, prior to the start of the halibut fishing period, the vessel has removed its gear from the water and has either:
 - (a) made a landing and completely offloaded its catch of other fish; or
 - (b) submitted to a hold inspection by an authorized officer.
- (9) No person on board a vessel from which setline gear was used to fish for any species of fish anywhere in Areas 2B, 2C, 3A, 3B, 4A, 4B, 4C, 4D, or 4E during the 72-hour period immediately before the opening of the halibut fishing season shall catch or possess halibut anywhere in those areas until the vessel has removed all of its setline gear from the water and has either:
 - (a) made a landing and completely offloaded its entire catch of other fish; or
 - (b) submitted to a hold inspection by an authorized officer.
- (10) No vessel from which setline gear was used to fish for any species of fish anywhere in Areas 2B, 2C, 3A, 3B, 4A, 4B, 4C, 4D, or 4E during the 72-hour period immediately before the opening of the halibut fishing season may be used to catch or possess halibut anywhere in those areas until the vessel has removed all of its setline gear from the water and has either:

- (a) made a landing and completely offloaded its entire catch of other fish; or
 - (b) submitted to a hold inspection by an authorized officer.
- (11) Notwithstanding any other provision in these Regulations, a person may retain, possess and dispose of halibut taken with trawl gear only as authorized by Prohibited Species Donation regulations of NMFS.

20. Supervision of Unloading and Weighing

The unloading and weighing of halibut may be subject to the supervision of authorized officers to assure the fulfillment of the provisions of these Regulations.

21. Retention of Tagged Halibut

- (1) Nothing contained in these Regulations prohibits any vessel at any time from retaining and landing a halibut that bears a Commission external tag at the time of capture, if the halibut with the tag still attached is reported at the time of landing and made available for examination by a representative of the Commission or by an authorized officer.
- (2) After examination and removal of the tag by a representative of the Commission or an authorized officer, the halibut:
 - (a) may be retained for personal use; or
 - (b) may be sold only if the halibut is caught during commercial halibut fishing and complies with the other commercial fishing provisions of these Regulations.
- (3) Externally tagged fish must count against commercial IVQs, CDQs, IFQs, or daily bag or possession limits unless otherwise exempted by State, Provincial, or Federal regulations.

22. Fishing by United States Treaty Indian Tribes

- (1) Halibut fishing in Subarea 2A-1 by members of United States treaty Indian tribes located in the State of Washington shall be regulated under regulations promulgated by NMFS and published in the Federal Register.
- (2) Subarea 2A-1 includes all waters off the coast of Washington that are north of 46°53'18'' N. latitude and east of 125°44'00'' W. longitude, and all inland marine waters of Washington.
- (3) Section 13 (size limits), section 14 (careful release of halibut), section 16 (logs), section 17 (receipt and possession of halibut) and section 19 (fishing gear), except paragraphs (7) and (8) of section 19, apply to commercial fishing for halibut in Subarea 2A-1 by the treaty Indian tribes.
- (4) Regulations in paragraph (3) of this section that apply to State fish tickets apply to Tribal tickets that are authorized by WDFW.
- (5) Section 4 (Licensing Vessels for Area 2A) does not apply to commercial fishing for halibut in Subarea 2A-1 by treaty Indian tribes.
- (6) Commercial fishing for halibut in Subarea 2A-1 is permitted with hook and line gear from March 14 through November 7, or until 307,700 pounds (139.6 metric tons) net weight is taken, whichever occurs first.

- (7) Ceremonial and subsistence fishing for halibut in Subarea 2A-1 is permitted with hook and line gear from January 1 through December 31, and is estimated to take 31,800 pounds (14.4 metric tons) net weight.

23. Customary and Traditional Fishing in Alaska

- (1) Customary and traditional fishing for halibut in Regulatory Areas 2C, 3A, 3B, 4A, 4B, 4C, 4D, and 4E shall be governed pursuant to regulations promulgated by NMFS and published in 50 CFR Part 300.
- (2) Customary and traditional fishing is authorized from January 1 through December 31.

24. Aboriginal Groups Fishing for Food, Social and Ceremonial Purposes in British Columbia

- (1) Fishing for halibut for food, social and ceremonial purposes by Aboriginal groups in Regulatory Area 2B shall be governed by the *Fisheries Act* of Canada and regulations as amended from time to time.

25. Sport Fishing for Halibut—General

- (1) No person shall engage in sport fishing for halibut using gear other than a single line with no more than two hooks attached; or a spear.
- (2) Any minimum overall size limit promulgated under IPHC or NMFS regulations shall be measured in a straight line passing over the pectoral fin from the tip of the lower jaw with the mouth closed, to the extreme end of the middle of the tail.
- (3) Any halibut brought aboard a vessel and not immediately returned to the sea with a minimum of injury will be included in the daily bag limit of the person catching the halibut.
- (4) No person may possess halibut on a vessel while fishing in a closed area.
- (5) No halibut caught by sport fishing shall be offered for sale, sold, traded, or bartered.
- (6) No halibut caught in sport fishing shall be possessed on board a vessel when other fish or shellfish aboard said vessel are destined for commercial use, sale, trade, or barter.
- (7) The operator of a charter vessel shall be liable for any violations of these Regulations committed by an angler on board said vessel. In Alaska, the charter vessel guide, as defined in 50 CFR 300.61 and referred to in 50 CFR 300.65, 300.66, and 300.67, shall be liable for any violation of these Regulations committed by an angler on board a charter vessel.

26. Sport Fishing for Halibut—Area 2A

- (1) The total allowable catch of halibut shall be limited to:
 - (a) 214,110 pounds (97.1 metric tons) net weight in waters off Washington;
 - (b) 187,259 pounds (84.9 metric tons) net weight in waters off Oregon; and
 - (c) 25,220 pounds (11.4 metric tons) net weight in waters off California.

- (2) The Commission shall determine and announce closing dates to the public for any area in which the catch limits promulgated by NMFS are estimated to have been taken.
- (3) When the Commission has determined that a subquota under paragraph (8) of this section is estimated to have been taken, and has announced a date on which the season will close, no person shall sport fish for halibut in that area after that date for the rest of the year, unless a reopening of that area for sport halibut fishing is scheduled in accordance with the Catch Sharing Plan for Area 2A, or announced by the Commission.
- (4) In California, Oregon, or Washington, no person shall fillet, mutilate, or otherwise disfigure a halibut in any manner that prevents the determination of minimum size or the number of fish caught, possessed, or landed.
- (5) The possession limit on a vessel for halibut in the waters off the coast of Washington is the same as the daily bag limit. The possession limit on land in Washington for halibut caught in U.S. waters off the coast of Washington is two halibut.
- (6) The possession limit on a vessel for halibut caught in the waters off the coast of Oregon is the same as the daily bag limit. The possession limit for halibut on land in Oregon is three daily bag limits.
- (7) The possession limit on a vessel for halibut caught in the waters off the coast of California is one halibut. The possession limit for halibut on land in California is one halibut.
- (8) Specific regulations describing fishing periods, catch limits, fishing dates, and daily bag limits are promulgated by NMFS and published in the Federal Register.

27. Sport Fishing for Halibut—Area 2B

- (1) In all waters off British Columbia:^{10,11}
 - (a) the sport fishing season will open on February 1 unless more restrictive regulations are in place;¹⁰
 - (b) the sport fishing season will close when the sport catch limit allocated by DFO, is taken, or December 31, whichever is earlier; and
 - (c) the daily bag limit is two halibut of any size per day per person.
- (2) In British Columbia, no person shall fillet, mutilate, or otherwise disfigure a halibut in any manner that prevents the determination of minimum size or the number of fish caught, possessed, or landed.
- (3) The possession limit for halibut in the waters off the coast of British Columbia is three halibut^{10,11}.

¹⁰ DFO could implement more restrictive regulations for the sport fishery, therefore anglers are advised to check the current Federal or Provincial regulations prior to fishing.

¹¹ For regulations on the experimental recreational fishery implemented by DFO check the current Federal or Provincial regulations.

28. Sport Fishing for Halibut—Areas 2C, 3A, 3B, 4A, 4B, 4C, 4D, 4E

- (1) In Convention waters in and off Alaska:^{12, 13}
 - (a) The sport fishing season is from February 1 to December 31.

PACIFIC HALIBUT FISHERY REGULATIONS 2015

- (b) The daily bag limit is two halibut of any size per day per person unless a more restrictive bag limit applies in Commission regulations or Federal regulations at 50 CFR 300.65.
 - (c) No person may possess more than two daily bag limits.
 - (d) No person shall possess on board a vessel, including charter vessels and pleasure craft used for fishing, halibut that have been filleted, mutilated, or otherwise disfigured in any manner, except that each halibut may be cut into no more than 2 ventral pieces, 2 dorsal pieces, and 2 cheek pieces, with skin on all pieces.¹⁴
 - (e) Halibut in excess of the possession limit in paragraph (1)(c) of this section may be possessed on a vessel that does not contain sport fishing gear, fishing rods, hand lines, or gaffs.
 - (f) All halibut harvested on a charter vessel fishing trip in Area 2C or Area 3A must be retained on board the charter vessel on which the halibut was caught until the end of the charter vessel fishing trip as defined at 50 CFR 300.61.
 - (g) Guided angler fish (GAF), as described at 50 CFR 300.65, may be used to allow a charter vessel angler to harvest additional halibut up to the limits in place for unguided anglers, and are exempt from the requirements in paragraphs 2 and 3 of this section.¹⁴
- (2) For guided sport fishing (as referred to in 50 CFR 300.65) in Regulatory Area 2C:
- (a) The total catch allocation, including an estimate of incidental mortality (wastage), is 851,000 pounds (386.0 metric tons).
 - (b) No person on board a charter vessel (as referred to in 50 CFR 300.65) shall catch and retain more than one halibut per calendar day.
 - (c) No person on board a charter vessel (as referred to in 50 CFR 300.65) shall catch and retain any halibut that with head on is greater than 42 inches (107 cm) and less than 80 inches (203 cm) as measured in a straight line, passing over the pectoral fin from the tip of the lower jaw with mouth closed, to the extreme end of the middle of the tail, as illustrated in Figure 3.
 - (d) If the halibut is filleted, the entire carcass, with head and tail connected as a single piece, must be retained on board the vessel until all fillets are offloaded.¹⁴
- (3) For guided sport fishing (as referred to in 50 CFR 300.65) in Regulatory Area 3A:
- (a) The total catch allocation, including an estimate of incidental mortality (wastage), is 1,890,000 pounds (857.3 metric tons).
 - (b) No person on board a charter vessel (as referred to in 50 CFR 300.65) shall catch and retain more than two halibut per calendar day.
 - (c) At least one of the retained halibut must have a head-on length of no more than 29 inches (74 cm) as measured in a straight line, passing over the pectoral fin from the tip of the lower jaw with mouth closed, to the extreme end of the middle of the tail, as illustrated in Figure 4. If a person sport fishing on a charter vessel in Area 3A retains only one halibut in a calendar day, that halibut may be of any length.
 - (d) If the size-restricted halibut is filleted, the entire carcass, with head and tail connected as a single piece, must be retained on board the vessel until all fillets are offloaded.¹⁴

- (e) A charter vessel on which one or more anglers catch and retain halibut may only make one charter vessel fishing trip per calendar day. A charter vessel fishing trip is defined at 50 CFR 300.61 as the time period between the first deployment of fishing gear into the water by a charter vessel angler (as defined at 50 CFR 300.61) and the offloading of one or more charter vessel anglers or any halibut from that vessel. For purposes of this trip limit, a charter vessel fishing trip ends at 11:59 p.m. (Alaska local time) on the same calendar day that the fishing trip began, or when any anglers or halibut are offloaded, whichever comes first.
- (f) No person on board a charter vessel may catch and retain halibut on Thursdays between June 15 and August 31. Only GAF halibut, if authorized by 50 CFR 300.65, may be retained by charter vessel anglers in Area 3A on Thursdays between these dates.
- (g) Charter vessel anglers may catch and retain no more than five (5) halibut per year on board charter vessels in Area 3A. Halibut that are retained as GAF, retained while on a charter vessel fishing trip in other Commission regulatory areas, or retained while fishing without the services of a guide do not accrue toward the 5-fish annual limit.

¹² NMFS could implement more restrictive regulations for the sport fishery or components of it, therefore, anglers are advised to check the current Federal or State regulations prior to fishing.

¹³ Charter vessels are prohibited from harvesting halibut in Areas 2C and 3A during one charter vessel fishing trip under regulations promulgated by NMFS at 50 CFR 300.66.

¹⁴ For halibut caught and retained as GAF, the charter vessel guide must immediately remove the tips of the upper and lower lobes of the caudal (tail) fin, and if the halibut is filleted, the entire carcass, with head and tail connected as a single piece, must be retained on board the vessel until all fillets are offloaded (50 CFR 300.65(c)(5)(iv)(G)). Additional regulations governing use of GAF are at 50 CFR 300.65.

29. Previous Regulations Superseded

These Regulations shall supersede all previous regulations of the Commission, and these Regulations shall be effective each succeeding year until superseded.

JAMES BALSIGER, Chair

PAUL RYALL, Vice-Chair

ROBERT ALVERSON

TED ASSU

DAVID BOYES

DONALD LANE

Published by the International Pacific Halibut Commission

PACIFIC HALIBUT FISHERY REGULATIONS 2015

**Synopsis of 2015 U.S. Sport Halibut Regulations for Washington, Oregon,
and California (IPHC Area 2A)**

Area	Description	Quota (lb)	Dates	# Days/Week
Puget Sound WA	East of Low Point	57,393	May 8 – 9 May 15 – 16 May 21 – 24 May 28 – 30	2 (FR – SA) 2 (FR – SA) 4 (TH – SU) 3 (TH – SA)
	West of Low Point & East of Sekiu River		May 15 – 16 May 21 – 24 May 29 – 30	2 (FR – SA) 4 (TH – SU) 2 (FR – SA)
North Coast WA	Sekiu River mouth to Queets River (closed area SW of Cape Flattery)	108,030	May 14 – 23 ¹ Jun 4 – **	2 (TH & SA)
South Coast WA	Queets River to Leadbetter Point All depths	40,739	May 3 – 19 ¹ May 31 – **	2 (SU & TU)
	Queets River to Leadbetter Point - Nearshore ²	2,000	May 3 – Sep 30 ¹	7 (MO – SU)
Columbia Riv³ WA/OR	Leadbetter Point to Cape Falcon All depth fishery	9,754	May 1 – Sep 30 ¹	4 (TH – SU)
	Leadbetter Point to Cape Falcon nearshore fishery ³	500	May 4 – Sep 30 ¹	3 (MO – WE)
Central Coast³ OR	Cape Falcon to Humbug Mt. All depths – Spring fishery	110,649	May 14 – 18 May 28 – 30 Jun 11 – 13 Jun 25 – 27 **	3 (TH – SA)
	Cape Falcon to Humbug Mt. All depths – Summer fishery	43,908	Aug 7 – 8 Aug 14 – 15 **	2 (FR – SA)
	Cape Falcon to Humbug Mt. – Near-shore fishery ⁴	21,076	Jul 1 – Oct 31 ¹	7 (MO – SU)
South Coast OR	South of Humbug Mt. to OR/CA border	7,318	May 1 – Oct 31 ¹	7 (MO – SU)
California	All waters off California	25,220	May 1 – May 15 June 1 – June 15 July 1 – July 15 Aug 1 – Aug 15 Sept 1 – Oct 31 ¹	7 (MO – SU)

NOTE: For all areas, there is a daily bag limit of one (1) fish of any size unless otherwise noted.

** Dates and re-openings to be announced by IPHC (www.iphc.int) and NMFS (NMFS hotline (1-800-662-9825; #5; #1))

¹ Season open until ending date shown or until the quota is attained, whichever occurs first.

² Restricted to waters inside the 30-fathom boundary line.

³ Restrictions on groundfish retention apply in this area. Check state regulations.

⁴ Restricted to waters inside the 40-fathom boundary line.

Synopsis of Selected IPHC, Canadian, and U.S. Sport Fishery Regulations for British Columbia and Alaskan areas (as of February 1, 2015)

Area	Season Dates	Sector	Restrictions on Retained Halibut
Area 2B – British Columbia	Feb. 1 – **		Daily bag limit is 1 fish. Max size of 133 cm. Possession limit is 2 fish; only one fish may be >90 cm. An annual limit of 6 fish **
Area 2C – Southeast AK²	Feb 1 – Dec 31	Charter	Daily bag limit is 1 fish; only fish ≤ 42 inches or ≥ 80 inches ¹ can be retained. Carcass must be retained if fish is filleted at sea.
		Private	Daily bag limit of 2 fish; no size restrictions
Area 3A – Central Gulf²		Charter ³	Daily bag limit is 2 fish; max size of 29 inches on second fish ¹ . Carcass must be retained if fish is filleted at sea. Annual limit of 5 halibut. Closed Thursdays June 15 – August 31
		Private	Daily bag limit of 2 fish; no size restrictions
Area 3B – Western Gulf²	All anglers		
Area 4 – Bering Sea²	All anglers		

** Closing date, in-season changes to restrictions, and experimental recreational program regulations to be announced by DFO (www.pac.dfo-mpo.gc.ca/recfish).

¹ Size restriction is based on total (head-on) length. See illustrations, next page.

² Possession limit for all Alaskan areas is two daily bag limits.

³ Halibut charter vessels are limited to one trip per calendar day.

PACIFIC HALIBUT FISHERY REGULATIONS 2015

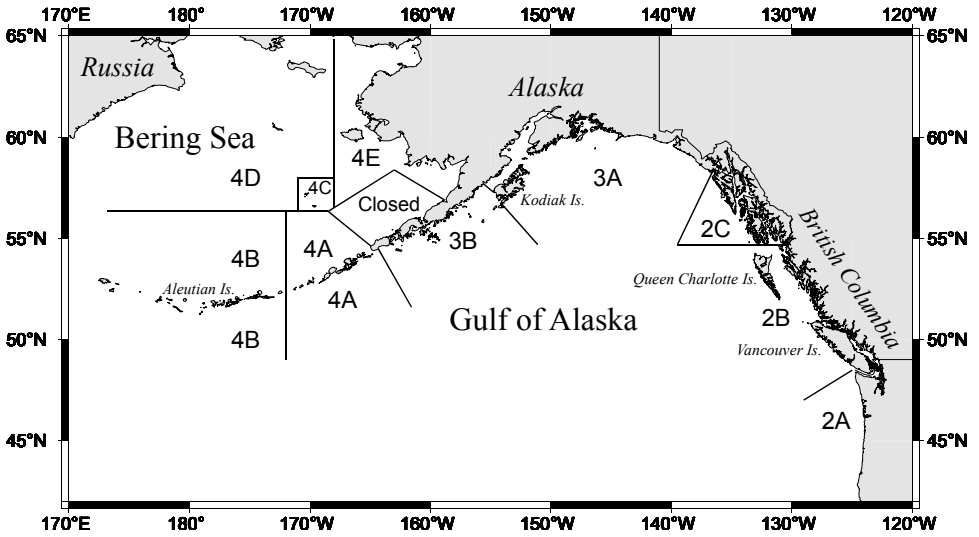


Figure 1. Regulatory areas for the Pacific halibut fishery.

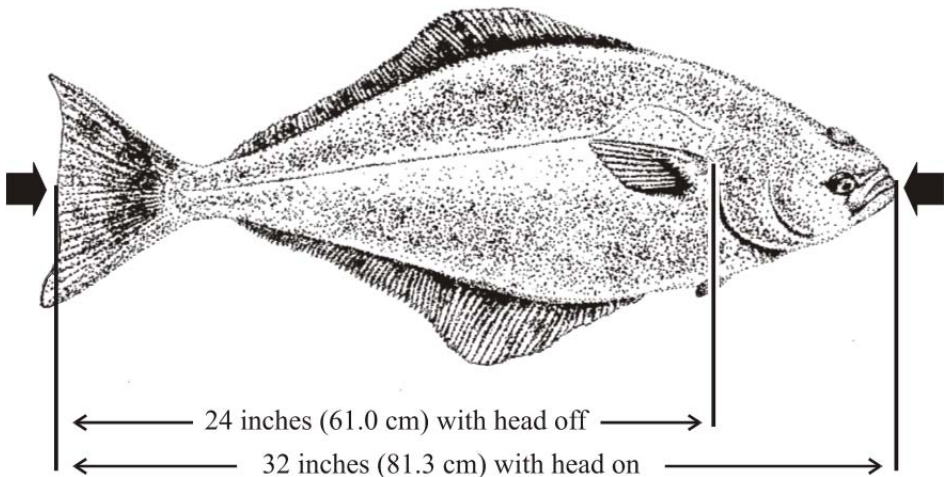


Figure 2. Minimum commercial size.

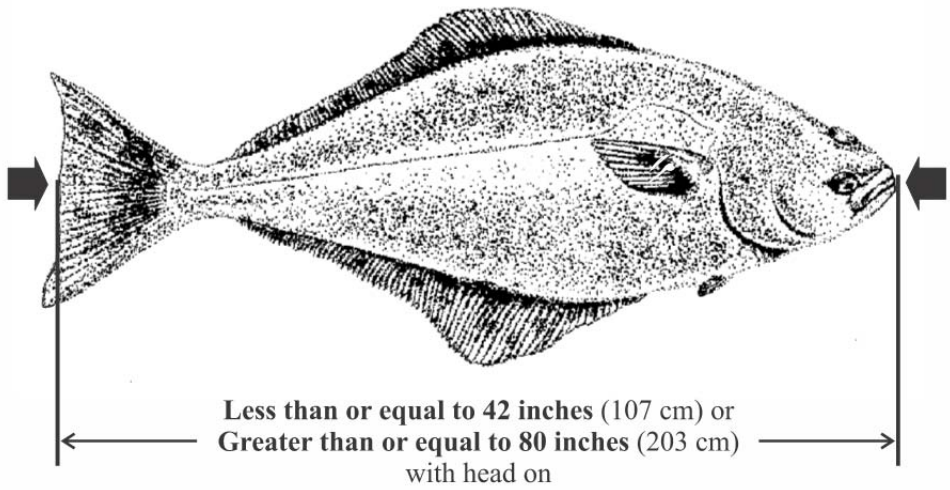


Figure 3. Recreational size limit for halibut on board vessel referred to in 50 CFR 300.65 and fishing in Regulatory Area 2C (see Section 28 paragraph 2(c)).

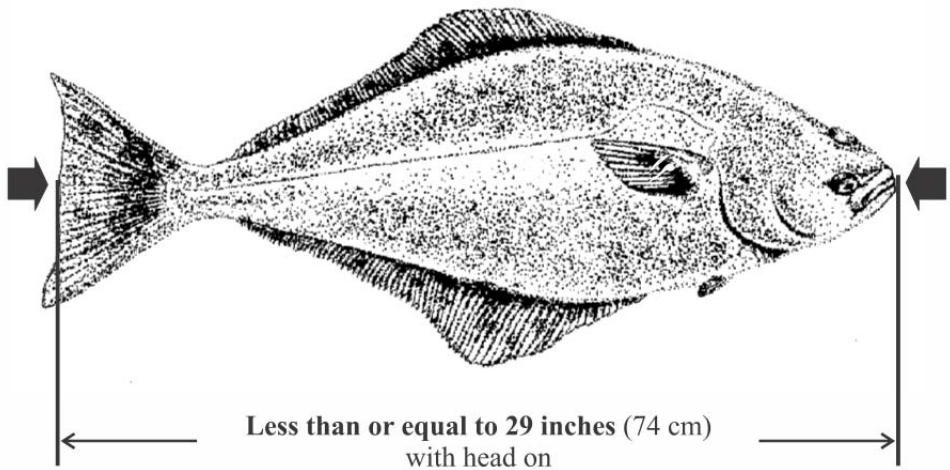


Figure 4. Recreational maximum size limit one fish in two-fish bag limit for halibut on board a charter vessel referred to in 50 CFR 300.65 and fishing in Regulatory Area 3A (see Section 28 paragraph 3(c)). If only one halibut is retained, it may be of any size.

Reward Offered for all Recovered Tags

Fishers should retain all tagged halibut regardless of gear type used, time of year caught, size of halibut, or type of tag!

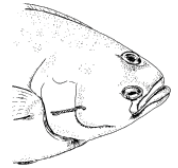
Instructions:

- Leave the tag on the fish until landed.
- Notify the IPHC by telephone. If there is an IPHC port sampler in the landing port, they will take measurements and ear bones from the halibut. If there is no sampler in the area, a staff member will instruct you on safe removal of the tag and how to redeem your reward.

There is a reward offered for every returned tag.

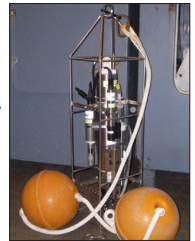
For details, visit the IPHC webpage:

<http://www.iphc.int/research/118-tag-recovery.html>



\$1500 Reward for the Recovery of Oceanographic Instruments

In 2009, the IPHC launched a program to collect oceanographic data alongside survey fishing data in order to monitor environmental conditions on the halibut grounds. Over time, two of the instruments have been lost: one off Kodiak Island and one off Adak Island. The instruments may be hard on bottom in these locations and it is possible that they could be snagged by fishing gear. For detailed location and recovery information, visit the IPHC webpage at:



<http://www.iphc.int/news-releases/news-releases-2011/203-nr20110727.html>

IPHC Solicits Applications for Merit Scholarship

The International Pacific Halibut Commission funds several Merit Scholarships to support university, technical college, and other post-secondary education. The scholarship fund has been established to assist the further education of Canadian and U.S. students connected to the halibut fishery and its industry. Generally, a single new scholarship valued at \$2,000 (US) per year is awarded. The scholarships are renewable annually for the normal four-year period of undergraduate education, subject to maintenance of satisfactory academic performance.

Applications must be postmarked no later than June 30, 2015 for the 2015/16 academic year. For detailed information, visit the IPHC webpage at:

<http://www.iphc.int/news-releases/402-nr20150223.html>

INTERNATIONAL PACIFIC HALIBUT COMMISSION
2320 WEST COMMODORE WAY, SUITE 300
SEATTLE, WA 98199-1287

NON-PROFIT ORG.
U.S. POSTAGE
PAID
SEATTLE, WA
PERMIT NO. 2101