

INTERNATIONAL PACIFIC



HALIBUT COMMISSION

State of the Fishery (2020) preliminary statistics

Agenda Item 5

IPHC-2020-IM096-05 Rev_1

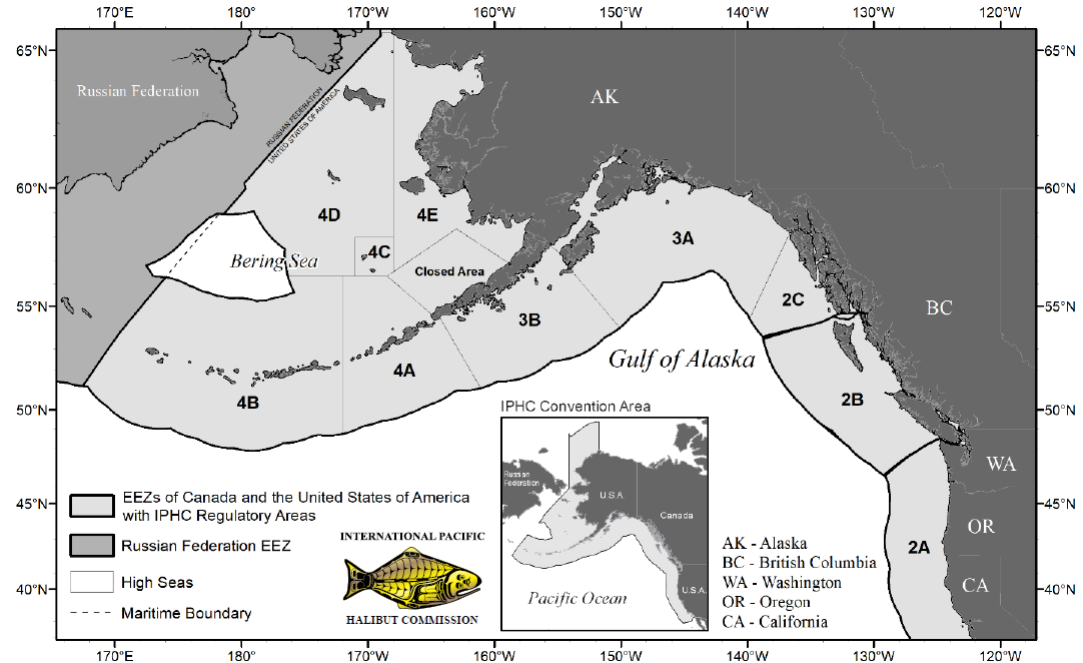


Overview

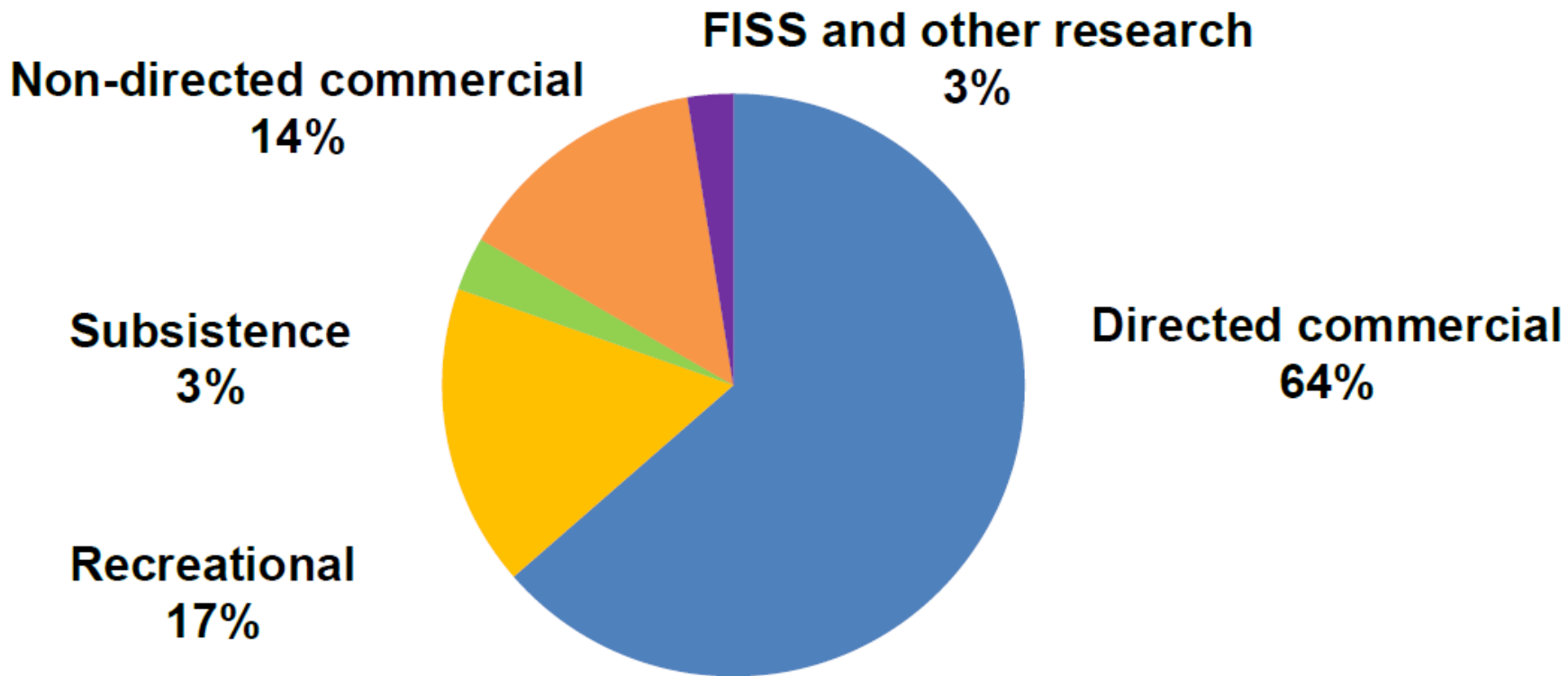
- Preliminary estimates
- Net weight
- Full year projection

**2020 TOTAL
MORTALITY**

**16,104 t
35.50 M lb**



Total Pacific Halibut Mortality



Total Pacific Halibut Removals

	2019			2020		
	tonnes	pounds	%	tonnes	pounds	%
Directed commercial (landings and discard mortality)	11,036	24,330,382	61*	10,235	22,564,126	64*
Recreational	3,194	7,041,194	18*	2,702	5,957,531	17*
Subsistence	481	1,060,241	3	479	1,055,924	3
Non-directed commercial discard mortality	2,976	6,562,000	16*	2,281	5,029,000	14*
IPHC FISS and research	407	897,417	2	407	896,925	3
Total	18,094	39,891,234	100	16,104	35,503,506	100

*Percentage of total (bottom row) for the given year – indicating shift of relative removals among the directed commercial, recreational and the non-directed commercial discard mortality fishery from 2019 to 2020



2020 Total Pacific Halibut Mortality

Contracting Party	Mortality limits (net weight)		Mortality (net weight)		Percent %
	Tonnes (t)	Pounds (lb)	Tonnes (t)	Pounds (lb)	
Canada - IPHC Regulatory Area 2B	3,089	6,830,000	2,994	6,601,461	97
United States of America	13,508	29,780,000	12,654	27,897,045	94
IPHC Regulatory Area 2A	748	1,650,000	640	1,410,153	85
IPHC Regulatory Area 2C	2,654	5,850,000	2,542	5,605,067	96
IPHC Regulatory Area 3A	5,534	12,200,000	5,333	11,758,046	96
IPHC Regulatory Area 3B	1,415	3,120,000	1,297	2,859,655	92
IPHC Regulatory Area 4A	794	1,750,000	696	1,534,568	88
IPHC Regulatory Area 4B	594	1,310,000	474	1,045,905	80
IPHC Regulatory Area 4CDE and Closed Area	1,769	3,900,000	1,671	3,683,651	94
Subtotal (TCEY)	16,601	36,600,000	15,648	34,498,506	94
Non-directed commercial discard mortality (U26)	none	none	456	1,005,000	n/a
Total	none	none	16,104	35,503,506	n/a



2020 Directed Commercial – Canada (BC)

14 March to 7 December

Quota Share Fishery

2,322 tonnes landed (5,120,000 pounds)

Projected at the fishery limit

2019: 2,276 tonnes landed, 2% under fishery limit



2020 Directed Commercial – USA (WA, OR, CA)

Treaty Indian directed commercial

- Fishery limit = 224 tonnes (0.49 Mlb)
- Openers by tribe
 - *Unrestricted fishery* (14 Mar to 30 Aug)
 - 55 hours
 - *Restricted fisheries* (14 Mar to 30 Sept)
 - 102 hours
 - 0.2 t (500 lb) per day & 5 landing max
 - *Mop-up fishery* (1 Oct to 18 Oct)
 - 0.36 t (800 lb) per calendar day per vessel
- **<1% below** fishery limit (222 tonnes, 0.49 Mlb)

Directed commercial

- Fishery limit = 115 tonnes (0.25 Mlb)
- Five 58-hr fishing periods (22-24 Jun, 6-8 Jul, 20-22 Jul, 3-5 Aug, 17-19 Aug)
- **5% under** fishery limit (110 tonnes, 0.24 Mlb)



2020 Directed Commercial – USA (WA, OR, CA)

Incidental commercial landings with salmon troll fishery

- Fishery limit = 20 tonnes (0.04 Mlb)
- Open 15 Apr to 30 Sep (WA), 15 Apr to 31 Oct (OR) and 1 Aug to 30 Sep (CA)
- No in-season action
 - 1:2 plus 1, max 35
- **35% under** fishery limit (13 tonnes, 0.03 Mlb)

Incidental commercial landings with sablefish fishery

- Fishery limit = 32 tonnes (0.07 Mlb)
- Open 1 Apr – 31 Oct
- One in-season action
 - 200:1000 plus 2 ▶ 250:1000 plus 2 (19 Oct)
- **12% under** fishery limit (28 tonnes, 0.06 Mlb)



2020 Directed Commercial – USA (AK)

14 March to 15 November

Quota Share Fishery

Fishery Limit = 7,761 tonnes (17.1 Mlb)

– **93% landed (7,192 tonnes, 15.9 Mlb)**

2019: 93% of fishery limit (7,945 tonnes; 17.5 Mlb)



Annette Island Reserve Fishery

IPHC REGULATORY AREA 2C

- **no fishery limit**
- **11 tonnes (0.02 Mlb) landed**
- 8 two-day openings between 12 June and 20 September



Percentage of Directed Commercial Pacific halibut fishery limit landed by week of year

Select a View
% of Fishery Limit

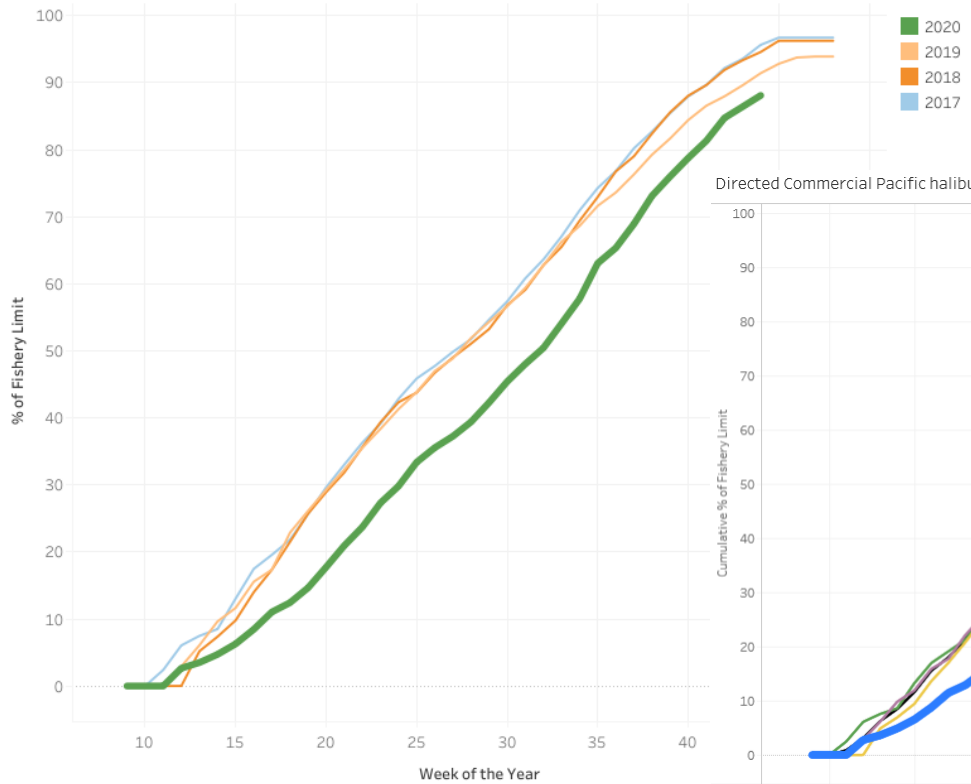
Select Summary
Cumulative

Select Units
Kilograms

Select Region(s)
 AK
 BC
 WA, OR, CA

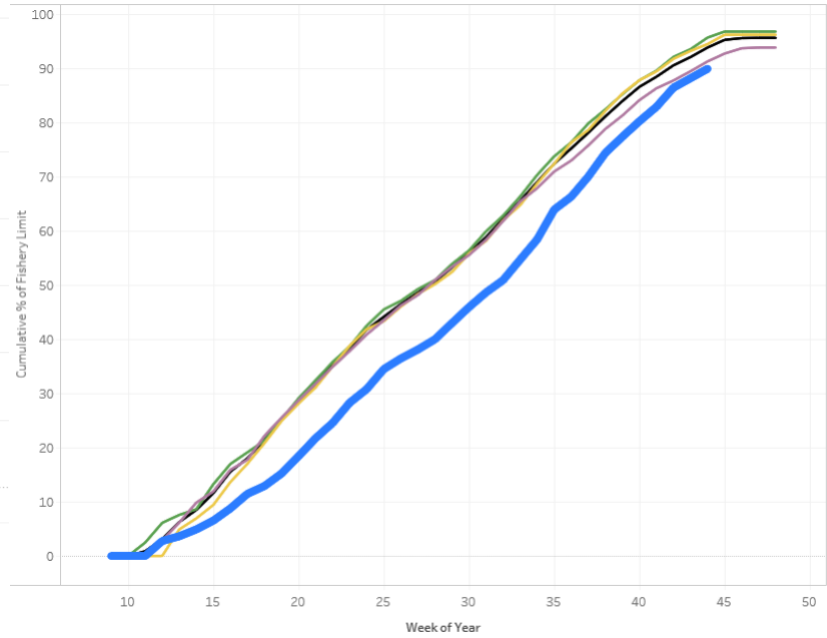
Select Year(s)
 (All)
 2020
 2019
 2018
 2017
 2016
 2015
 2014
 2013

Select Week Number...
9 48



Coastwide Year to date

Directed Commercial Pacific halibut landing patterns by year with previous 3-year average (AK and BC)



Select View
Percentage of Fishery...

Select Summary
Cumulative

Select Units
Kilograms

Region
 AK+BC
 AK
 BC

Select year
2020

Year
 (All)
 2020
 2019
 2018
 2017
 3-YR AVG

Year
 2020
 2019
 2018
 2017
 3-YR AVG

<https://www.iphc.int/data/landings-2020>

<https://www.iphc.int/data/year-to-date-directed-commercial-landing-patterns-ak-and-bc>



Percentage of Directed Commercial Pacific halibut fishery limit landed by week of year

Canada

Select a View
% of Fishery Limit

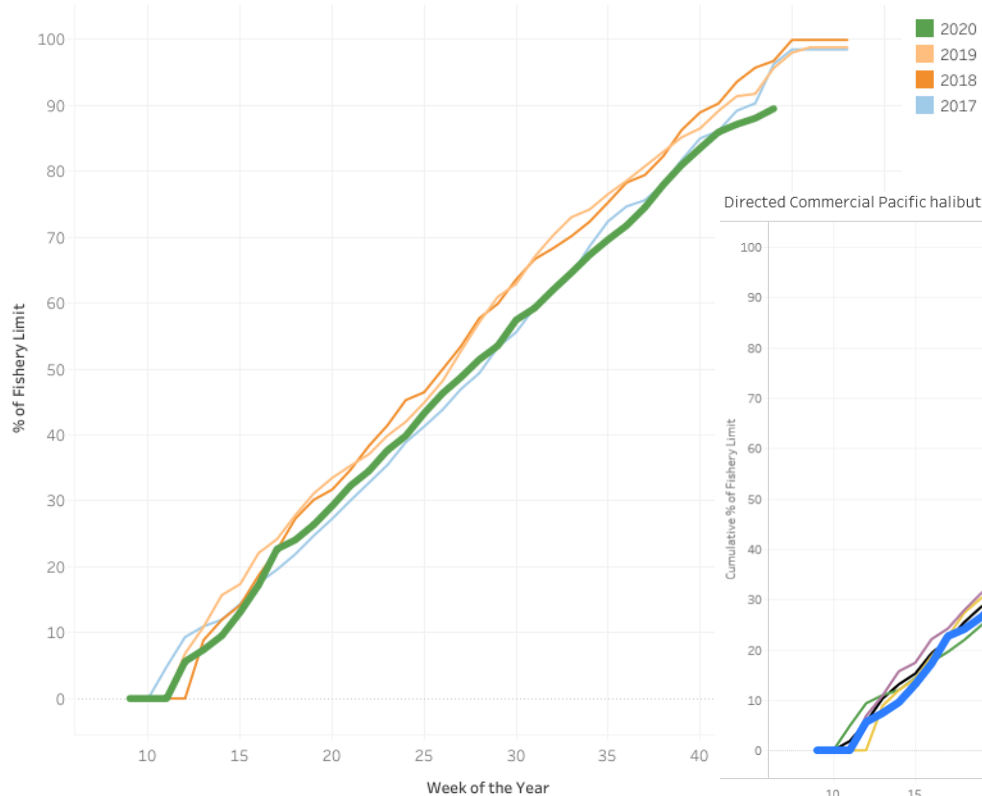
Select Summary
Cumulative

Select Units
Kilograms

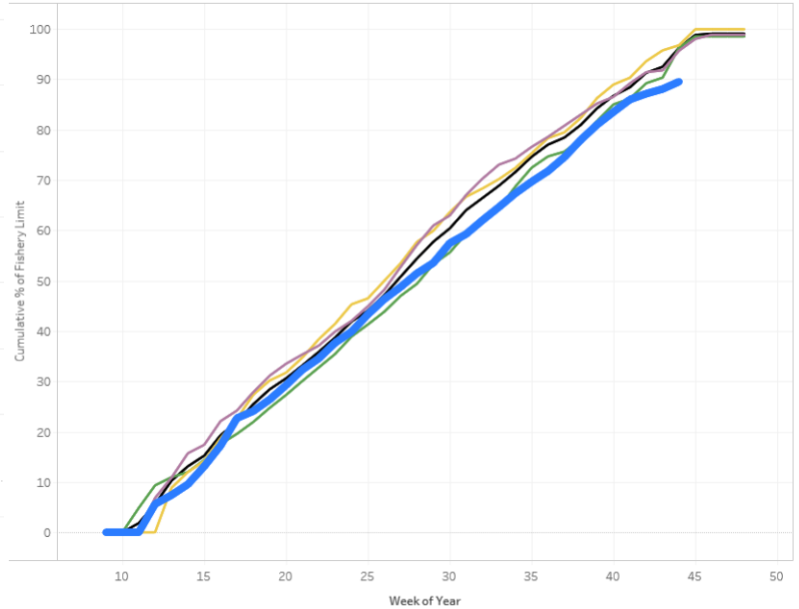
Select Region(s)
 AK
 BC
 WA, OR, CA

Select Year(s)
 (All)
 2020
 2019
 2018
 2017
 2016
 2015
 2014
 2013

Select Week Number...
9 48



Directed Commercial Pacific halibut landing patterns by year with previous 3-year average (AK and BC)



Select View
Percentage of Fishery Limit

Select Summary
Cumulative

Select Units
Kilograms

Region
 AK+BC
 AK
 BC

Select year
2020

Year
 (All)
 2020
 2019
 2018
 2017
 3-YR AVG

Year
 2020
 2019
 2018
 2017
 3-YR AVG



Percentage of Directed Commercial Pacific halibut fishery limit landed by week of year

USA: Alaska

Select a View
% of Fishery Limit

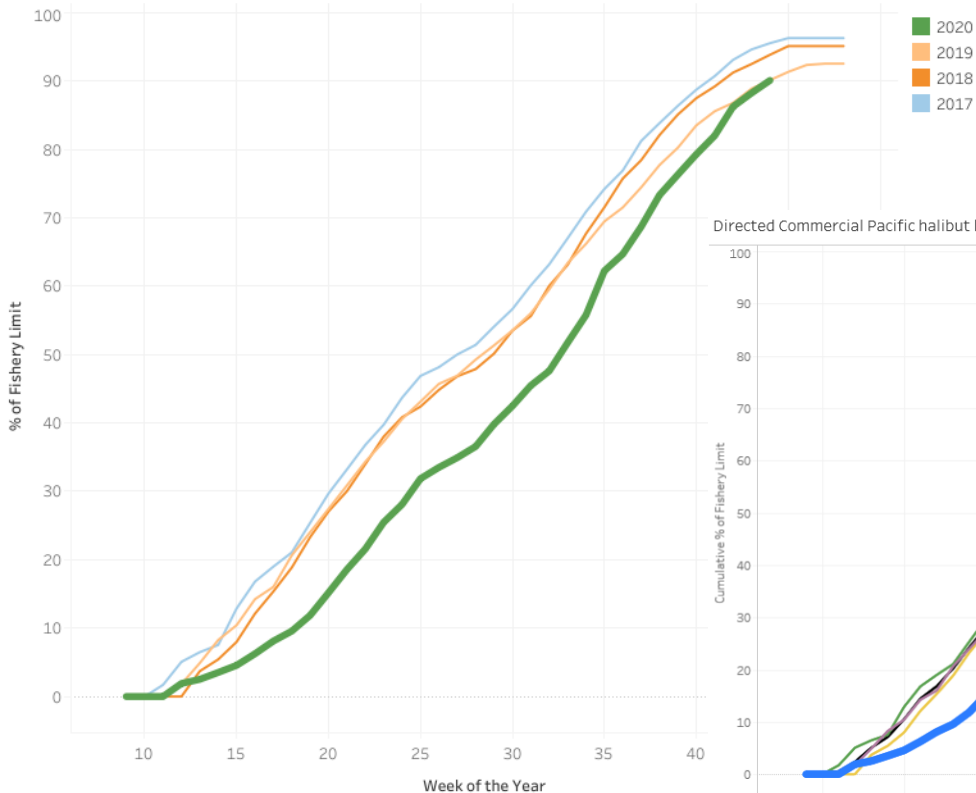
Select Summary
Cumulative

Select Units
Kilograms

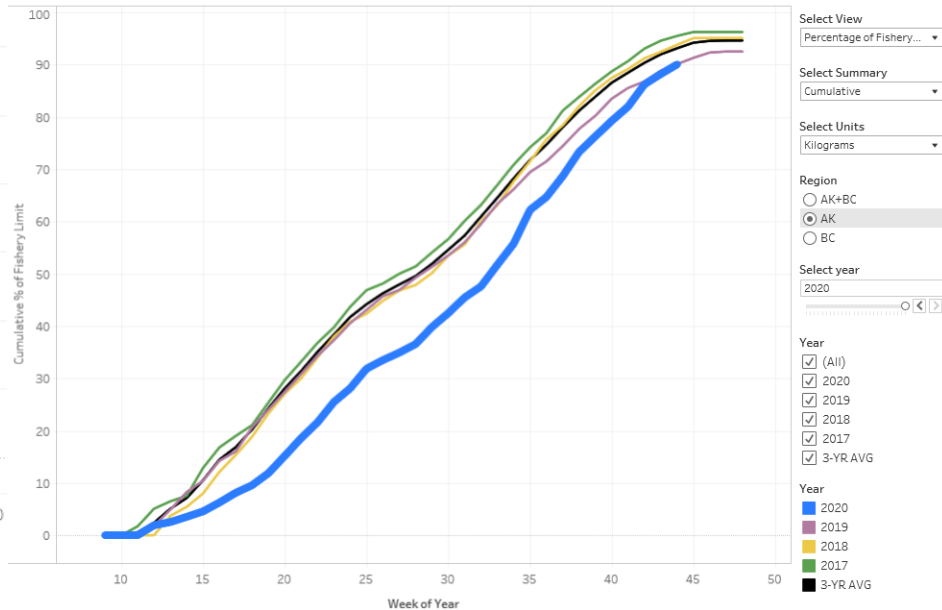
Select Region(s)
 AK
 BC
 WA, OR, CA

Select Year(s)
 (All)
 2020
 2019
 2018
 2017
 2016
 2015
 2014
 2013

Select Week Number...
 9 48



Directed Commercial Pacific halibut landing patterns by year with previous 3-year average (AK and BC)



2020 Recreational – Canada (BC)

Allocation = 399 tonnes (0.88 Mlb)

estimated: **46% under** or 217 tonnes (0.5 Mlb)

Tidal licence fishery (1 Mar):

- Max length of 126 cm
- Daily and possession limit of 1 Pacific halibut 90-126 cm
OR 2 Pacific halibut if both under 90 cm
- Annual limit 6 per license holder
- **In-season action (14 Aug)**
 - Matching daily limit to possession limit

Experimental Recreational Quota (XRQ)

- leased from the Commercial Quota Fishery
- Not opened in 2020 (due to COVID-19)



2020 Recreational – USA (WA, OR, CA)

Allocation = 275 tonnes (0.6 Mlb)
189 tonnes (0.4 Mlb, 69%)

California

29 tonnes (0.06 Mlb) – **164%**

Oregon

75 tonnes (0.17 Mlb) – **57%**

Washington

81.0 t (0.18 Mlb) – **64%**



2020 Recreational – USA (AK)

- All areas open 1 Feb - 31 Dec – projected values
- **IPHC Regulatory Area 2C - charter sector (guided)**
 - Allocation = 354 tonnes t (0.78 Mlb)
 - **36% under** fishery limit – 227 tonnes (0.50 Mlb)
 - Daily bag limit of 1 fish
 - Reverse slot limit
 - Fork length \leq 45 inches or \geq 80 inches
 - In-season action: IPHC Regulations updated 20 May
 - From fork length \leq 40 inches or \geq 80 inches
- Guided Angler Fish (GAF) – leased from the Commercial Quota Fishery
 - 25 tonnes landed (0.06 Mlb)



2020 Recreational – USA (AK)

All areas open 1 Feb - 31 Dec – projected values

IPHC Regulatory Area 3A – charter sector (guided)

- Allocation = 776 tonnes (1.71 Mlb)
- **7% under** fishery limit - 724 tonnes (1.60 Mlb)
- Daily bag limit of 2 fish
- Max size limit for second fish of 32 inches (81.3 cm)
- Each vessel limited to 1 trip per day
- No annual limit
- In-season IPHC Regulations changed 20 May from:
 - Max size limit for second fish of 26 inches (66 cm)
 - Tuesday and Wednesday closures
 - Annual limit of 4 fish

Guided Angler Fish (GAF)

- Leased from the Commercial Quota Fishery
- 1 tonne landed (0.002 Mlb)



2020 Recreational – USA (AK)

All areas open 1 Feb - 31 Dec – projected values

Private anglers (unguided) in all areas

- Removals at 1,310 tonnes (2.89 Mlb) with no fishery limit
 - IPHC Regulatory Area 2C – 526 tonnes (1.16 Mlb)
 - IPHC Regulatory Area 3A – 771 tonnes (1.70 Mlb)
- Possession limit 2 fish daily bag limit
- No size restrictions
- No annual limit



2020 Subsistence Fisheries – All Areas

1 January to 31 December

2007 estimate carried over for Canada

2018 estimates carried over for USA

TOTAL REMOVALS

- 479 tonnes (1.06 Mlb)
- 529 tonnes (1.17 Mlb) in 2017

CANADA

- 184 tonnes (0.41)
- 136 tonnes (0.30 Mlb) in 2006

USA – WA, OR AND CA

- 15 tonnes (0.03 Mlb)
- 13 tonnes (0.03 Mlb) in 2018

USA – AK

- 281 tonnes (0.62 Mlb)
- 333 tonnes (0.73 Mlb) in 2017



2020 Non-directed Discard Mortality

1 January to 31 December – Preliminary estimates

TOTAL – 2,281 tonnes (5.03 Mlb)
2019: 2,977 tonnes (6.56 Mlb)

CANADA
– 111 tonnes (0.25 Mlb)

USA – WA, OR AND CA
– 49 tonnes (0.11 Mlb)

USA – AK
– 2,121 tonnes (4.68 Mlb)



2020 Fishery-Independent Setline Survey (FISS) and Research

TOTAL – 407 tonnes (0.90 Mlb)

CANADA – BC

– 89 tonnes (0.20 Mlb)

USA – AK

– 318 tonnes (0.70 Mlb)



Pacific Halibut Mortality in Excess – Canada

Fishery	Mortality projection		2020 Mortality		
	tonnes	pounds	tonnes	pounds	Percent
Directed commercial discard mortality	59	130,000	75	165,000	127



Pacific Halibut Mortality in Excess – USA

Fishery	IPHC Regulatory Area	Mortality limit or projection		2020 Mortality		
		tonnes	pounds	tonnes	pounds	percent
Directed commercial discard mortality	2A – discard mortality	14	30,000	15	33,000	110
Recreational	2A – California	18	39,000	29	64,107	164
	2C – Unguided	522	1,150,000	526	1,159,541	101
	3A – Unguided	753	1,660,000	771	1,700,199	102
	3B	0	0	5	11,377	n/a
	4A	5	10,000	7	16,237	162



Pacific Halibut Mortality in Excess – USA

Fishery	IPHC Regulatory Area	Mortality limit or projection		2020 Mortality		
		tonnes	pounds	tonnes	pounds	percent
Subsistence	4A	5	10,000	6	13,237	132
	4B	0	0	1	1,684	n/a
Non-directed commercial discard mortality (O26)	2C	32	70,000	42	93,000	133
	4A	100	220,000	111	245,000	111



Mortality Estimates with Greatest Uncertainty

Directed Commercial Discard Mortality – U.S.A.

- **Alaska**
 - inaccurate mean fish weight
 - No observer coverage for vessels less than 40 feet
 - Hook and line observer coverage is low (GOA and Bering Sea)

Recreational – Canada and U.S.A

- Self reporting of lodges in BC and AK

Subsistence – Canada and U.S.A.

- Estimates not updated
 - since 2007 (Canada) and 2018 (U.S.A)

Non-directed commercial discard mortality – Canada and U.S.A.

- No update for Canada in 2020
- Hook and line observer coverage is low in GOA and Bering Sea
- Non-pelagic trawl catcher vessel observer coverage is low in GOA



2020 Port Highlights

Tissue Sampling Coastwide

- 2019 samples completed and part of assessment

Chalky Pacific halibut

- Regular questionnaire throughout the season for processors – BESB

Economic Pacific halibut survey

<https://www.iphc.int/management/science-and-research/economic-research>

Canada

- Adding collection of marine mammal details to logbook – agreement with USA logbooks
- Prince Rupert – saw less landings this year than previous years' level as landings shifted to Port Hardy.



2020 Port Highlights

USA

- Reports of low prices
- Kodiak –saw less landings this year than previous years' level.
- Dutch Harbor – saw more landings this year – likely due to community closures for COVID.
- Whales continue to be of concern
 - Slinky pots use increasing



2020 Updates



Head-on requirement

- Implemented in 2017
- Fresh landings with head off
 - none in USA
 - Canada
 - **<0.4 tonnes (<1,000 lb or 0.02%) 2020**
 - **10.2 tonnes (22,597 lb or 0.4%) 2019**
 - **5.4 tonnes (11,821 lb or 0.2%) 2018**
 - **2.8 tonnes (6,186 lb or 0.1%) 2017**
- Frozen landings with head off
 - none in USA
 - Canada
 - 21.9 tonnes (48,277 lb or 1%) 2020
 - 24.7 tonnes (54,375 lb or 1%) 2019
 - 41.8 tonnes (92,148 lb or 2%) 2018
 - 35.6 tonnes (78,583 lb or 1%) 2017



2020 Updates

Use of pot gear

- Implemented in USA in 2017
- Landings with pot gear
 - Canada – n/a
 - USA (AK)
 - 32 tonnes (70,310 lb or 0.44%) 2020
 - 29 tonnes (63,726 lb or 0.36%) 2019
 - 23 tonnes (49,995 lb or 0.30%) 2018
 - 12 tonnes (27,025 lb or 0.14%) 2017
- Logs with pot gear
 - Canada
 - 1.2 tonnes (2,648 lb or 0.05%) 2020
 - 4.0 tonnes (8,825 lb or 0.2%) 2019
 - <1.0 tonnes (<100 lb or <0.01%) 2017
 - USA (AK)
 - 27.4 tonnes (60,477 lb or 0.4%) 2020
 - 26.8 tonnes (59,085 lb or 0.4%) 2019
 - 22.4 tonnes (49,308 lb or 0.3%) 2018
 - 12.2 tonnes (26,813 lb or 0.3%) 2017



2020 FISHERIES DATA SPECIALISTS (FIELD)



Jessica Marx
Homer



Binget Nilsson
Seward



Michele Drummond
Juneau



Darlene Haugan
Prince Rupert



Tachi Sopow
Sitka



Matthieu Fontaine
Petersburg



Dave Jackson
Kodiak



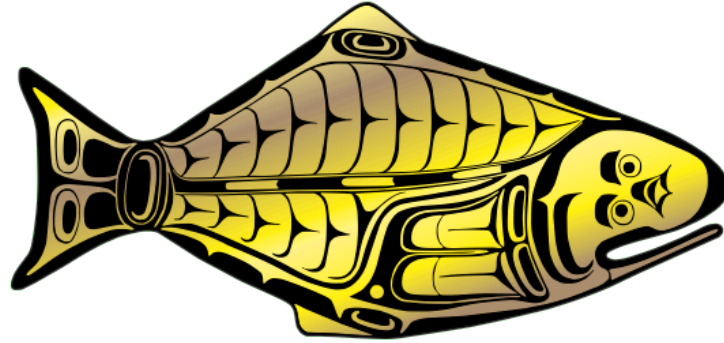
Jenni Rogge
Dutch Harbor



Chelsea Hutton
Port Hardy



INTERNATIONAL PACIFIC



HALIBUT COMMISSION

