



INTERNATIONAL PACIFIC



HALIBUT COMMISSION

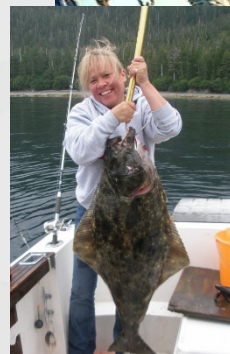
# National Report United States of America

Agenda Item 9.2

IPHC-2019-IM095-NR02

# **NOAA-Fisheries NORTH PACIFIC FISHERY MANAGEMENT COUNCIL (NPFMC)**





## Recent Council Actions Related to Halibut Fisheries

A report to the International Pacific Halibut Commission, October 2019

David Witherell, Executive Director  
North Pacific Fishery Management Council



# Halibut Management Actions

## Observer Costs

- Council took final action in October to increase fees for the partial observer coverage category to 1.65%. Also looking into cost efficiencies.

## IFQ Medical and Beneficiary Transfers

- Council took final action in April to limit medical transfers to 3 of 7 most recent years; change beneficiary provisions; certified medical provisional defined.

## IFQ CQE Fish Up in 3A

- Council took final action to allow CQE communities in 3A to fish D class quota on C class vessels after August 15.

## Unguided Halibut

- Council reviewed an analysis to require registration of non-guided rental vessels; would apply the charter bag/size limits to recreational anglers on rental boats. Final action scheduled in December.

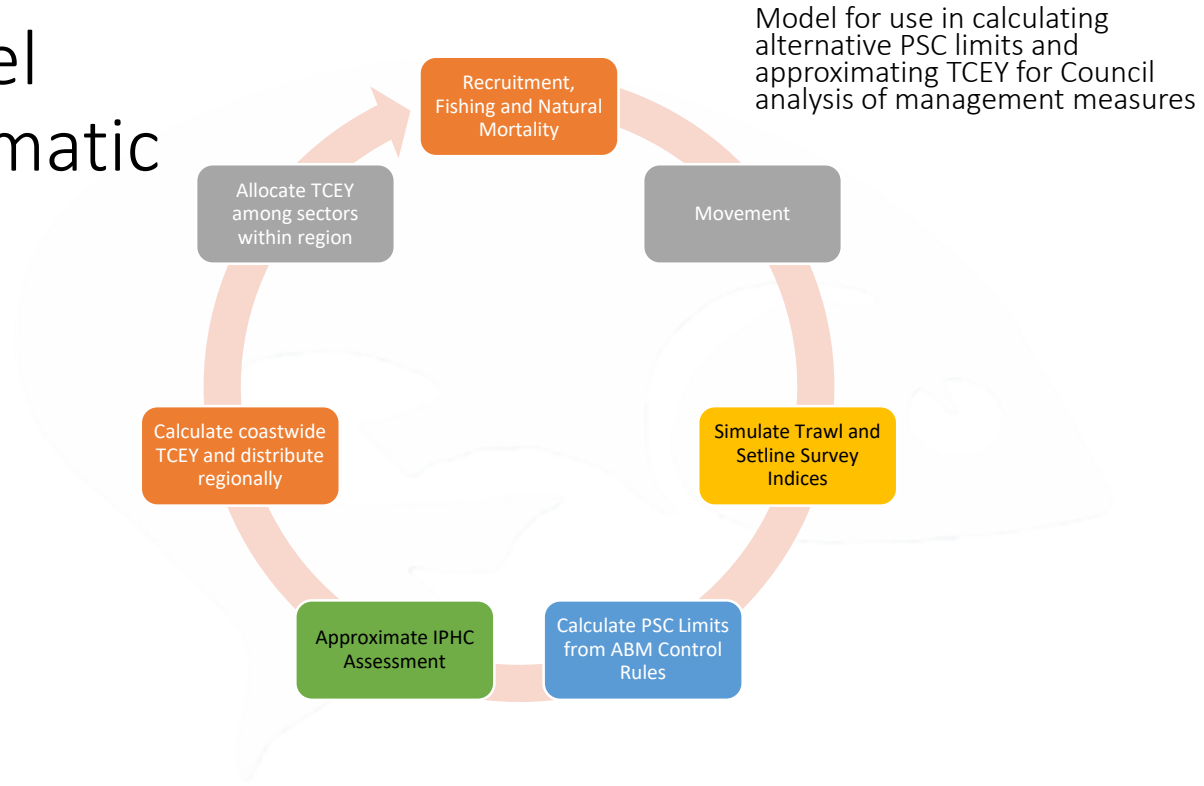
# Abundance-based Management of Halibut PSC

## Inter- Agency Working Group

- Council Staff
- NOAA Alaska Fisheries Science Center
- International Pacific Halibut Commission
- NMFS Alaska Regional Office

<https://meetings.npfmc.org/CommentReview/DownloadFile?p=24ed20d5-4180-4d68-aea2-55afb25df194.pdf&fileName=C1%20Halibut%20ABM%20Analysis.pdf>

# Two-area Model Schematic



## Big picture message

- The SSC reviewed the ABM analysis, approved in general of the model formulation for purposes of this action and made some specific suggestions for model simulations and impact analysis.
- The working group intends to address the SSC recommendations in the next iteration of the analysis. In doing so, many of the concepts noted in the IPHC letter will also be addressed.
- The work plan for this analysis is structured around either June or October review by Council
  - Primary difference is amount of time allowed for iterative modeling and document synthesis and review.



# Outcomes of the October meeting

- Council requested work group address SSC comments to extent possible. Some additional performance metrics were suggested.
- Specific SSC comments:
  - Overall recommendation was approval of model formulation for use in analysis with some suggested revisions and sensitivity analyses
  - Main issue related to assumption of PSC usage (fixed at 2016-2018 average).
    - Simulate usage with some uncertainty
  - Look at a scenario of low recruitment to evaluate performance at low abundance
  - Run some model simulations longer than 20 years to see if rankings among alternatives are sensitive to longer time frame
  - Suggestions on the analysts TCEY algorithm = linear relationship between SSB and total mortality (2007-2018)
    - Implement a simple 30:20 rule to reduce TCEY at low levels of abundance
    - Consider alternative time period for TCEY relationship and/or better justify time period selected
    - Allow for temporal autocorrelation in this regression and/or difference variances at low and high stock abundance
    - Downweight earlier years (higher weight to more recent years)
  - Implement actual stakeholder proposals as submitted
  - Rank alternatives by complexity

<https://meetings.npfmc.org/CommentReview/DownloadFile?p=c214a173-0cba-4cd2-b46d-88b756dc6198.pdf&fileName=DRAFT%20SSC%20MINUTES%20C1.pdf>



# Feedback on IPHC letter (received 9/30/2019)

- The IPHC raised 4 overall points (similar to SSC comments)
  1. Modeling  $F_{SPR}$  calculations
    - the SSC did not request that this be modeled. The analysts will consider how it could be addressed efficiently, if possible.
  2. Fixed percentage of TCEY was a typo in the document and was not how TCEY was assigned to the BSAI.
    - The model allocates the TCEY according to the proportion of survey biomass occurring in the BSAI
  3. 30:20 rule simulated.
    - An approximation was suggested by the SSC under a low recruitment scenario and will be incorporated into the next iteration of the analysis
  4. PSC usage.
    - The SSC provided feedback on alternative methods. An approach to incorporate uncertainty in usage is planned.

# Questions?



North Pacific  
Fishery  
Management  
Council

[www.npfmc.org](http://www.npfmc.org)



# BSAI Abundance-Based PSC Limits

October motion: <https://tinyurl.com/HalibutABM-1018>

Alternative 1: No action (3,515 mt; sector apportionments)

Alternative 2: Single index used to set trawl and/or non-trawl halibut PSC limit.

- Option 1: NMFS EBS bottom trawl survey index.
- Option 2: IPHC Area 4 setline survey index.

Alternative 3: Primary and secondary indices are used to set trawl and/or non-trawl PSC limit.

- Option 1: Primary index is EBS trawl survey, secondary index is Area 4 setline survey.
- Option 2: Primary index is Area 4 setline survey, secondary index is EBS trawl survey.

Alternative 4: Use two indices (EBS trawl survey and Area 4 setline survey) to set the non-trawl PSC limit in the form of a look-up table.

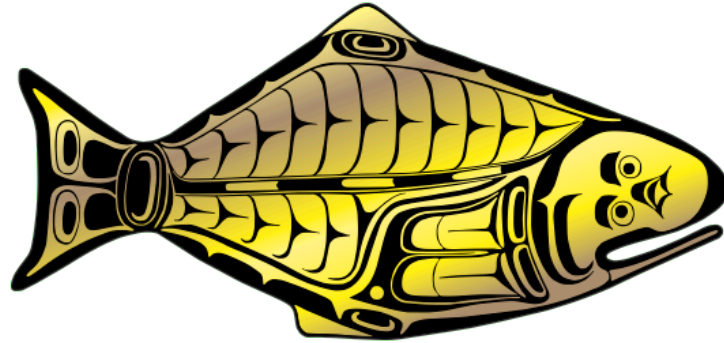
- ✓ A range of elements and options exist for each alternative.
- ✓ A **Stakeholder Committee** will recommend specific alternative/element/option combinations for analysis to understand impacts.

# **NOAA-Fisheries PACIFIC FISHERY MANAGEMENT COUNCIL (PFMC)**

None provided as of 22 Nov 2019



**INTERNATIONAL PACIFIC**



**HALIBUT COMMISSION**

