

INTERNATIONAL PACIFIC



HALIBUT COMMISSION

State of the Fishery (2020)

Agenda Item 4

IPHC-2021-AM097-05 Rev_1

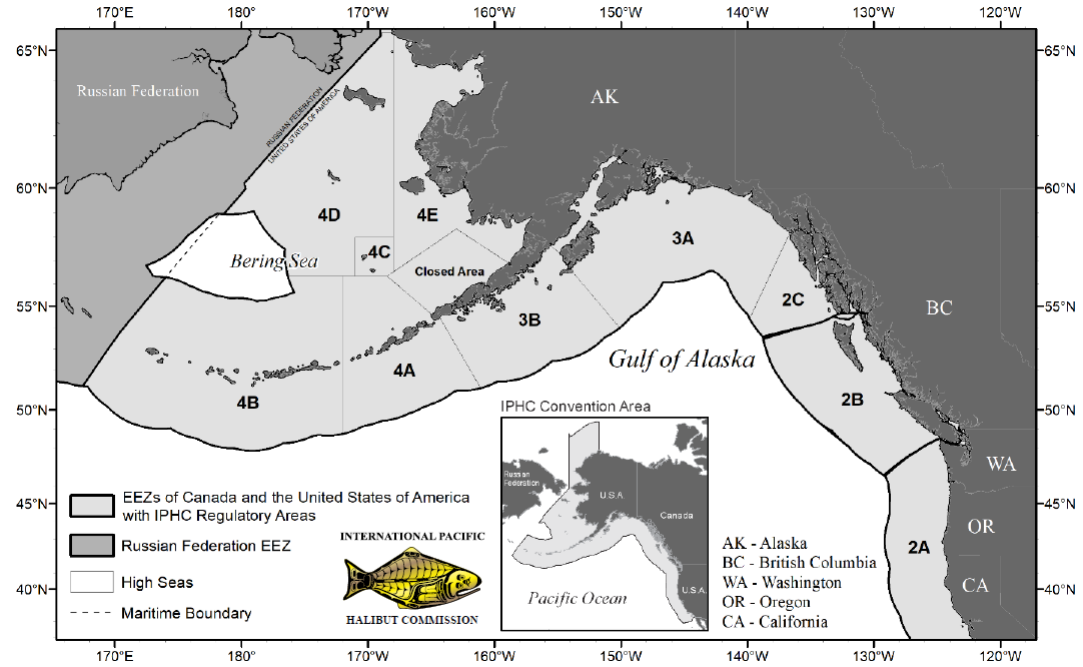


Overview

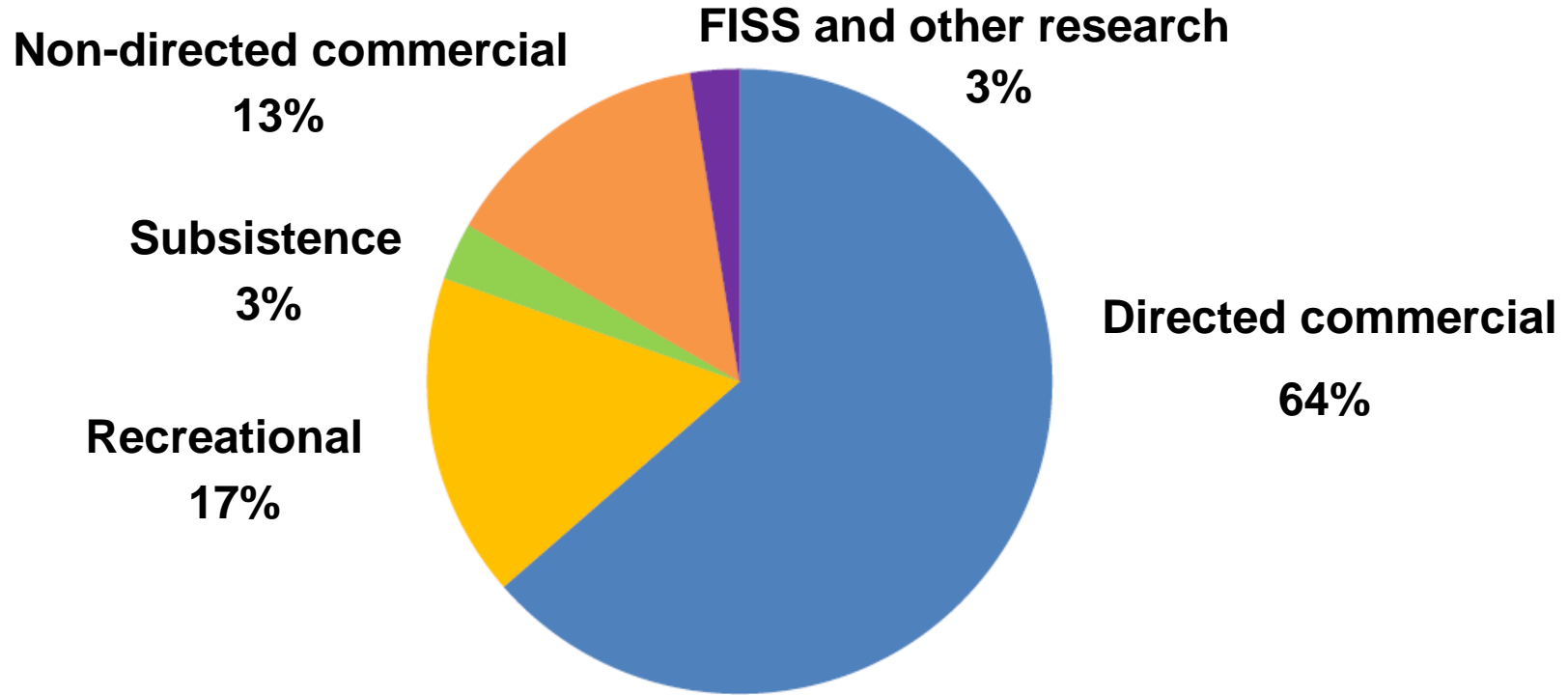
- Estimates for some sectors
- Net weight
- Full year projection

**2020 TOTAL
MORTALITY**

**15,891 t
35.03 M lb**



Total Pacific Halibut Mortality



Total Pacific Halibut Removals

	2019			2020		
	tonnes	pounds	%	tonnes	pounds	%
Directed commercial (landings and discard mortality)	11,036	24,330,382	61*	10,159	22,395,933	64*
Recreational	3,194	7,041,194	18*	2,722	6,000,327	17*
Subsistence	481	1,060,241	3	483	1,065,202	3
Non-directed commercial discard mortality	2,977	6,564,000	16*	2,121	4,675,000	13*
IPHC FISS and research	407	897,417	2	407	896,925	3
Total	18,095	39,893,234	100	15,891	35,033,387	100

*Percentage of total (bottom row) for the given year – indicating shift of relative removals among the directed commercial, recreational and the non-directed commercial discard mortality fishery from 2019 to 2020



2020 Total Pacific Halibut Mortality

Contracting Party	Mortality limits (net weight)		Mortality (net weight)		Percent %
	Tonnes (t)	Pounds (lb)	Tonnes (t)	Pounds (lb)	
Canada - IPHC Regulatory Area 2B	3,089	6,830,000	2,904	6,402,376	94
United States of America	13,508	29,780,000	12,565	27,700,011	93
IPHC Regulatory Area 2A	748	1,650,000	645	1,421,745	86
IPHC Regulatory Area 2C	2,654	5,850,000	2,560	5,643,248	96
IPHC Regulatory Area 3A	5,534	12,200,000	5,316	11,720,165	96
IPHC Regulatory Area 3B	1,415	3,120,000	1,268	2,796,158	90
IPHC Regulatory Area 4A	794	1,750,000	680	1,498,469	86
IPHC Regulatory Area 4B	594	1,310,000	468	1,030,977	79
IPHC Regulatory Area 4CDE and Closed Area	1,769	3,900,000	1,628	3,589,249	92
Subtotal (TCEY)	16,601	36,600,000	15,469	34,103,387	93
Non-directed commercial discard mortality (U26)	none	none	422	930,000	n/a
Total	none	none	15,891	35,033,387	n/a



2020 Directed Commercial – Canada (BC)

14 March to 7 December

Quota Share Fishery

2,219 tonnes landed (4,892,000 pounds)

4% under the fishery limit

2019: 2,276 tonnes landed, 2% under fishery limit



2020 Directed Commercial – U.S.A. (WA/OR/CA)

Treaty Indian directed commercial

- Fishery limit = 224 tonnes (0.49 Mlb)
- Openers by tribe
 - *Unrestricted fishery* (14 Mar to 30 Sept)
 - 55 hours
 - *Restricted fisheries* (14 Mar to 30 Sept)
 - 222 hours
 - 0.2 t (500 lb) per day & 10 landing days (max)
 - *Mop-up fishery* (5 Oct to 18 Oct)
 - 0.36 t (800 lb) per calendar day per vessel
- **<1% below** fishery limit (222 tonnes, 0.49 Mlb)

Directed commercial

- Fishery limit = 115 tonnes (0.25 Mlb)
- Five 58-hr fishing periods (22-24 Jun, 6-8 Jul, 20-22 Jul, 3-5 Aug, 17-19 Aug)
- **5% under** fishery limit (110 tonnes, 0.24 Mlb)



2020 Directed Commercial – U.S.A. (WA/OR/CA)

Incidental commercial landings with salmon troll fishery

- Fishery limit = 20 tonnes (0.04 Mlb)
- Open 15 Apr to 30 Sep (WA), 15 Apr to 31 Oct (OR) and 1 Aug to 30 Sep (CA)
- No in-season action
 - 1:2 plus 1, max 35
- **35% under** fishery limit (13 tonnes, 0.03 Mlb)

Incidental commercial landings with sablefish fishery

- Fishery limit = 32 tonnes (0.07 Mlb)
- Open 1 Apr – 31 Oct
- One in-season action
 - 200:1000 plus 2 ▶ 250:1000 plus 2 (19 Oct)
- **9% under** fishery limit (29 tonnes, 0.06 Mlb)



2020 Directed Commercial – U.S.A. (AK)

14 March to 15 November

Quota Share Fishery

Fishery Limit = 7,761 tonnes (17.1 Mlb)

7% under the fishery limit (**7,218 tonnes, 15.9 Mlb**)

2019: 7% under the fishery limit (7,945 tonnes; 17.5 Mlb)



Annette Island Reserve Fishery

IPHC REGULATORY AREA 2C

- **no fishery limit**
- **11 tonnes (0.02 Mlb) landed**
- 8 two-day openings between 12 June and 20 September



Percentage of Directed Commercial Pacific halibut fishery limit landed by week of year

Select a View
% of Fishery Limit

Select Summary
Cumulative

Select Units
Kilograms

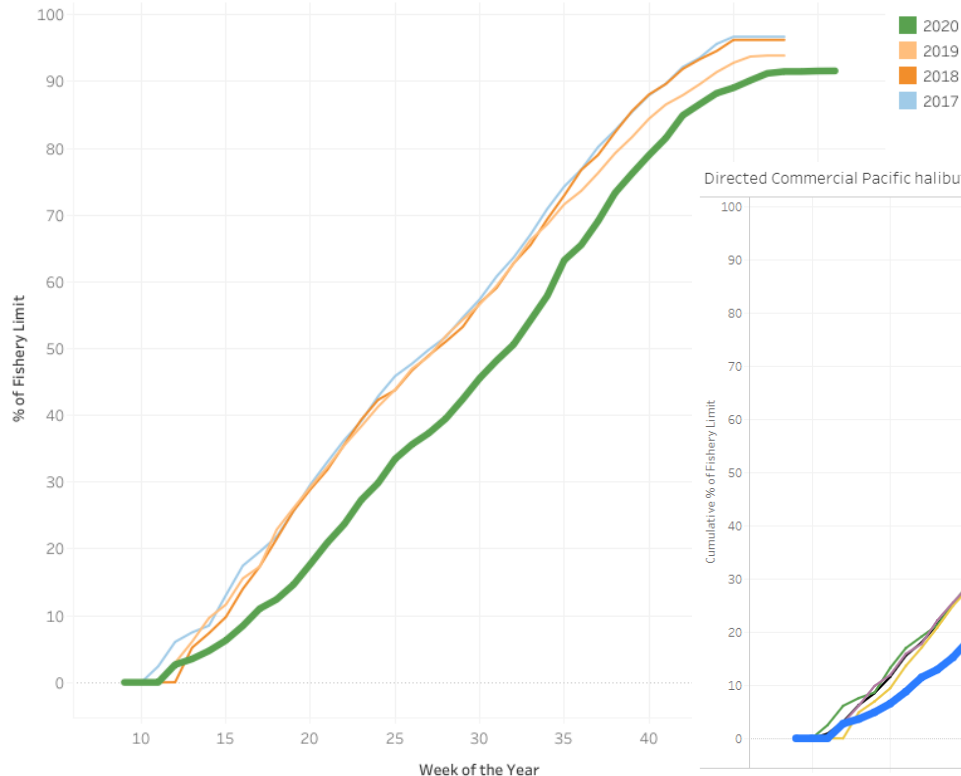
Select Region(s)

- AK
- BC
- WA, OR, CA

Select Year(s)

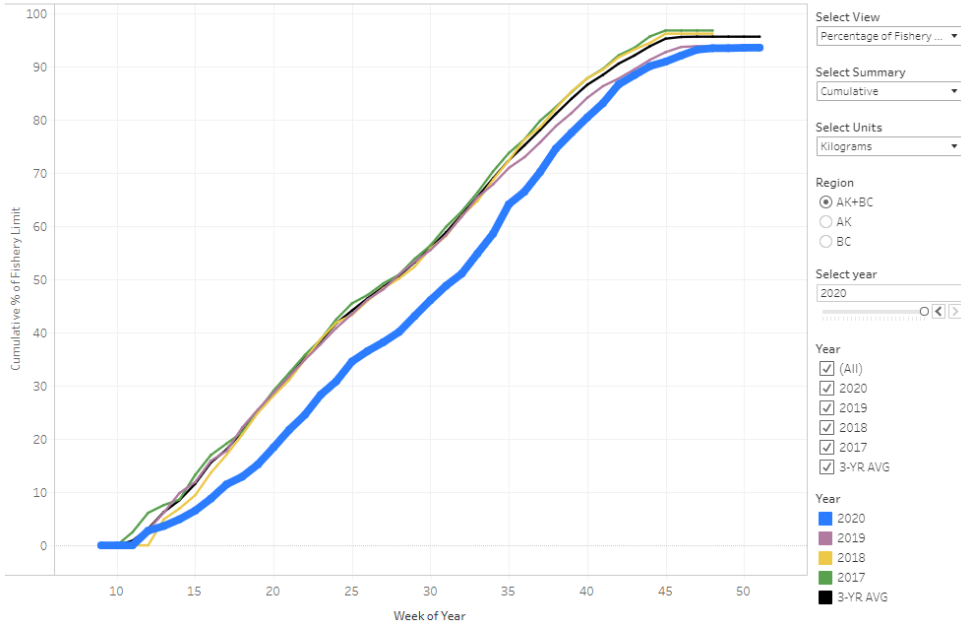
- (All)
- 2020
- 2019
- 2018
- 2017
- 2016
- 2015
- 2014
- 2013

Select Week Number...



Coastwide Year to date

Directed Commercial Pacific halibut landing patterns by year with previous 3-year average (AK and BC)



<https://www.iphc.int/data/landings-2020>

<https://www.iphc.int/data/year-to-date-directed-commercial-landing-patterns-ak-and-bc>



Percentage of Directed Commercial Pacific halibut fishery limit landed by week of year

Canada

Select a View
% of Fishery Limit

Select Summary
Cumulative

Select Units
Kilograms

Select Region(s) ρ

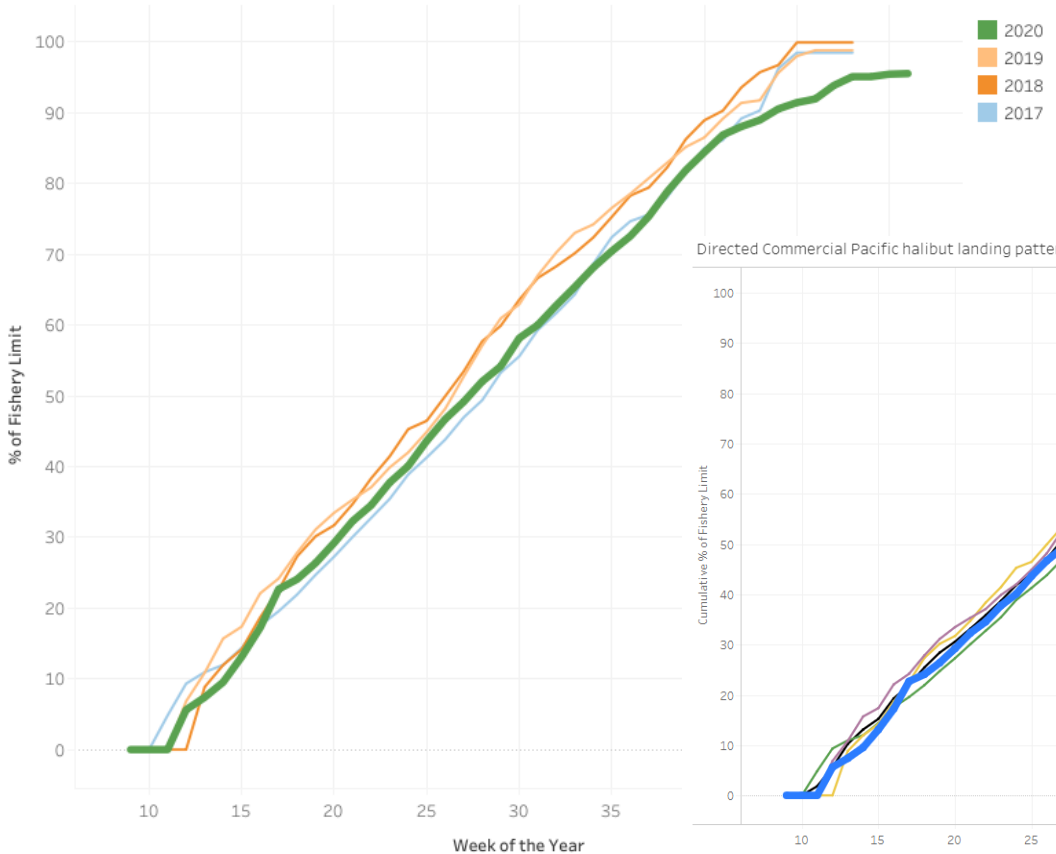
- AK
- BC
- WA, OR, CA

Select Year(s)

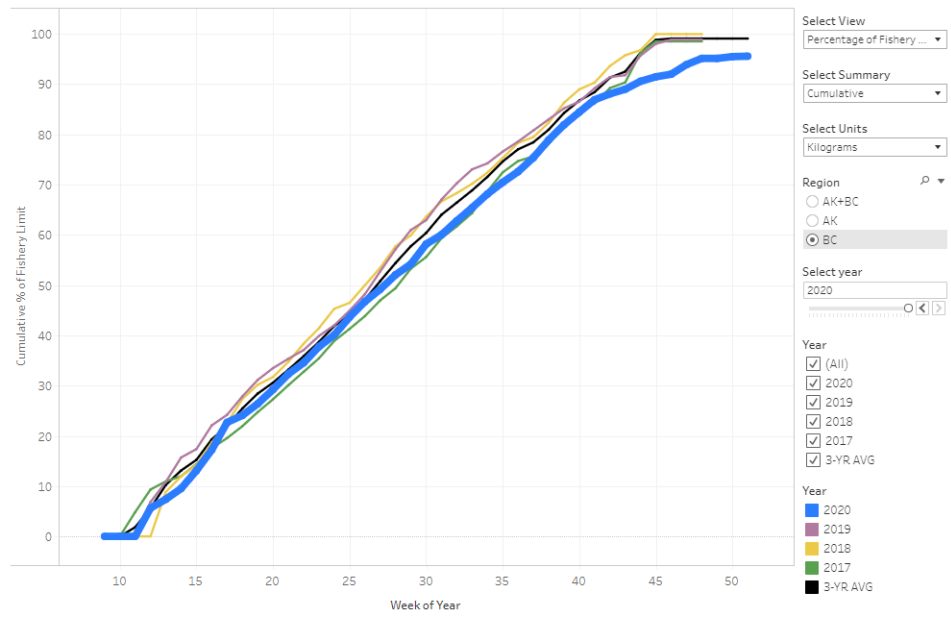
- (All)
- 2020
- 2019
- 2018
- 2017
- 2016
- 2015
- 2014
- 2013

Select Week Number...

9 51



Directed Commercial Pacific halibut landing patterns by year with previous 3-year average (AK and BC)



Percentage of Directed Commercial Pacific halibut fishery limit landed by week of year

U.S.A.: Alaska

Select a View
 % of Fishery Limit

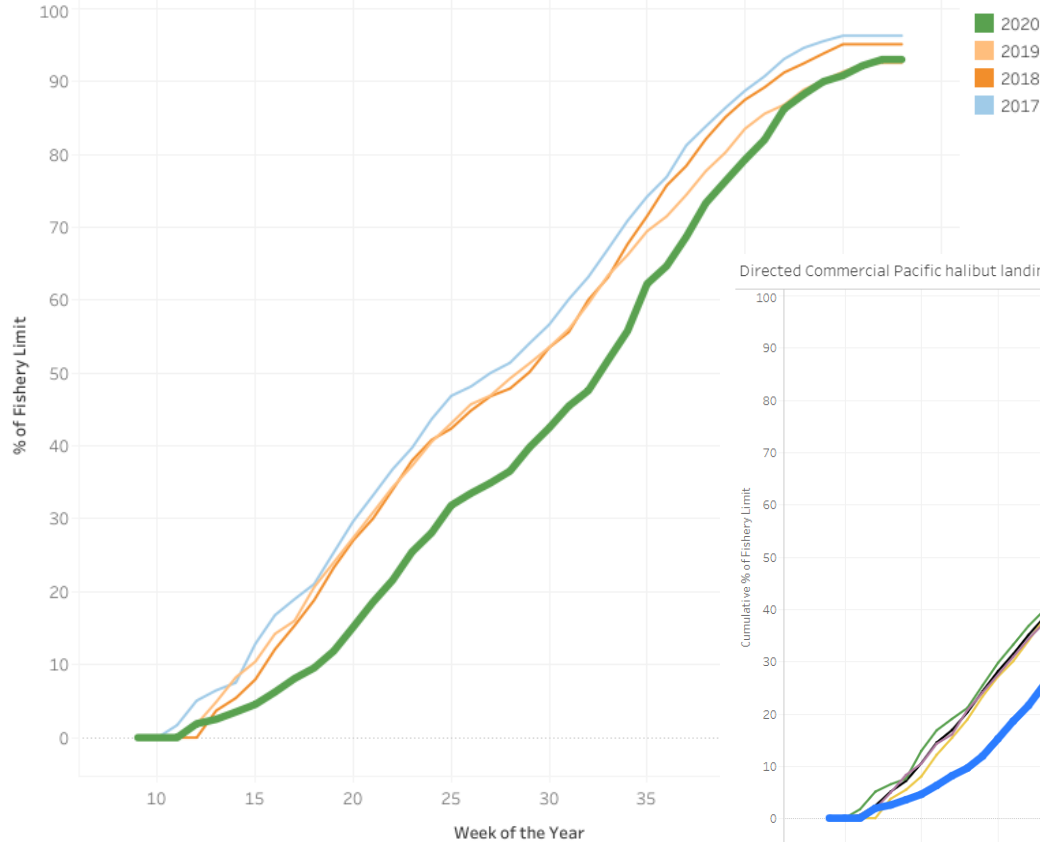
Select Summary
 Cumulative

Select Units
 Kilograms

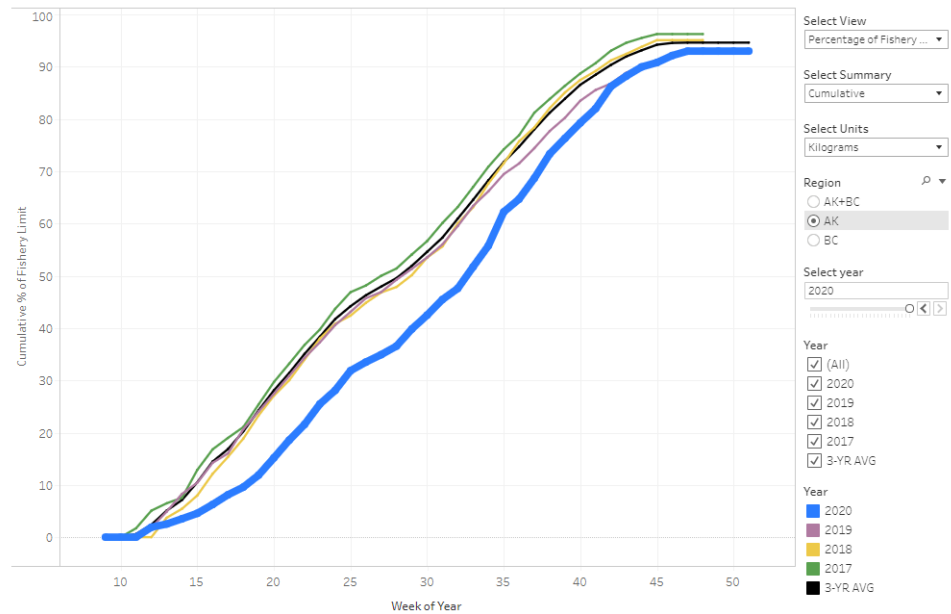
Select Region(s)
 AK
 BC
 WA, OR, CA

Select Year(s)
 (All)
 2020
 2019
 2018
 2017
 2016
 2015
 2014
 2013

Select Week Number...
 9 51



Directed Commercial Pacific halibut landing patterns by year with previous 3-year average (AK and BC)



2020 Recreational – Canada (BC)

Allocation = 399 tonnes (0.88 Mlb)

41% under the fishery limit (235 tonnes, 0.5 Mlb)

Tidal licence fishery (1 Mar):

- Max length of 126 cm
- Daily and possession limit of 1 Pacific halibut 90-126 cm
OR 2 Pacific halibut if both under 90 cm
- Annual limit 6 per license holder
- **In-season action (14 Aug)**
 - Matching daily limit to possession limit

Experimental Recreational Quota (XRQ)

- leased from the Commercial Quota Fishery
- Not opened in 2020 (due to COVID-19)



2020 Recreational – U.S.A. (WA, OR, CA)

Allocation = 275 tonnes (0.6 Mlb)

31% under the fishery limit (189 tonnes, 0.4 Mlb)

California

64% over the fishery limit
(29 tonnes, 0.06 Mlb)

Oregon

43% under the fishery limit
(75 tonnes, 0.17 Mlb)

Washington

36% under the fishery limit
(81 tonnes, 0.18 Mlb)



2020 Recreational – U.S.A. (AK)

- All areas open 1 Feb - 31 Dec – projected values
- **IPHC Regulatory Area 2C - charter sector (guided)**
 - Allocation = 354 tonnes t (0.78 Mlb)
 - **36% under** fishery limit – 227 tonnes (0.50 Mlb)
 - Daily bag limit of 1 fish
 - Reverse slot limit
 - Fork length ≤ 45 inches or ≥ 80 inches
 - In-season action: IPHC Regulations updated 20 May
 - From fork length ≤ 40 inches or ≥ 80 inches
- Guided Angler Fish (GAF) – leased from the Commercial Quota Fishery
 - 25 tonnes landed (0.06 Mlb)



2020 Recreational – U.S.A. (AK)

All areas open 1 Feb - 31 Dec – projected values

IPHC Regulatory Area 3A – charter sector (guided)

- Allocation = 776 tonnes (1.71 Mlb)
- **7% under** fishery limit - 724 tonnes (1.60 Mlb)
- Daily bag limit of 2 fish
- Max size limit for second fish of 32 inches (81.3 cm)
- Each vessel limited to 1 trip per day
- No annual limit
- In-season IPHC Regulations changed 20 May from:
 - Max size limit for second fish of 26 inches (66 cm)
 - Tuesday and Wednesday closures
 - Annual limit of 4 fish

Guided Angler Fish (GAF)

- Leased from the Commercial Quota Fishery
- 1 tonne landed (0.002 Mlb)



2020 Recreational – U.S.A. (AK)

All areas open 1 Feb - 31 Dec – projected values

Private anglers (unguided) in all areas

- Removals at 1,310 tonnes (2.89 Mlb) with no fishery limit
 - IPHC Regulatory Area 2C – 526 tonnes (1.16 Mlb)
 - IPHC Regulatory Area 3A – 771 tonnes (1.70 Mlb)
- Possession limit 2 fish daily bag limit
- No size restrictions
- No annual limit



2020 Subsistence Fisheries – All Areas

1 January to 31 December

2007 estimate carried over for Canada

2018 estimates carried over for U.S.A. (Alaska only)

TOTAL REMOVALS

- 483 tonnes (1.07 Mlb)
- 529 tonnes (1.17 Mlb) in 2017

CANADA

- 184 tonnes (0.41)
- 136 tonnes (0.30 Mlb) in 2006

U.S.A. – WA, OR AND CA

- 19 tonnes (0.04 Mlb)
- 15 tonnes (0.03 Mlb) in 2019

U.S.A. – AK

- 281 tonnes (0.62 Mlb)
- 333 tonnes (0.73 Mlb) in 2017



Non-directed Commercial Discard Mortality 2020

1 January to 31 December – Preliminary estimates

TOTAL – 2,120 tonnes (4.68 Mlb)
2019: 2,977 tonnes (6.56 Mlb)

CANADA
– 104 tonnes (0.23 Mlb)

U.S.A. – WA, OR AND CA
– 49 tonnes (0.11 Mlb)

U.S.A. – AK
– 1,967 tonnes (4.34 Mlb)



2020 Fishery-Independent Setline Survey (FISS) and Research

TOTAL – 407 tonnes (0.90 Mlb)

CANADA – BC

– 89 tonnes (0.20 Mlb)

U.S.A. – AK

– 318 tonnes (0.70 Mlb)



Pacific Halibut Mortality in Excess – Canada

Fishery	Mortality projection		2020 Mortality		
	tonnes	pounds	tonnes	pounds	Percent
Directed commercial discard mortality	59	130,000	75	165,000	127

Mortality projection – not part of the Fishery Constant Exploitation Yield



Pacific Halibut Mortality in Excess – U.S.A.

Fishery	IPHC Regulatory Area	Mortality limit or projection		2020 Mortality		
		tonnes	pounds	tonnes	Pounds	percent
Directed commercial discard mortality	2A ²	14	30,000	15	33,000	110
Recreational	2A – California ¹	18	39,000	29	64,107	164
	2C – Unguided ²	522	1,150,000	526	1,159,541	101
	3A – Unguided ²	753	1,660,000	771	1,700,199	102
	3B ²	0	0	5	11,377	n/a
	4A ²	5	10,000	7	16,237	162

¹Mortality limit – part of the Fishery Constant Exploitation Yield

²Mortality projection – not part of the Fishery Constant Exploitation Yield



Pacific Halibut Mortality in Excess – U.S.A.

Fishery	IPHC Regulatory Area	Mortality limit or projection		2020 Mortality		
		tonnes	pounds	tonnes	pounds	percent
Subsistence	2A ¹	15	32,200	19	41,478	129
	4A ²	5	10,000	6	13,237	132
	4B ²	0	0	1	1,684	n/a
Non-directed commercial discard mortality (O26)	2C ²	32	70,000	42	93,000	133
	4A ²	100	220,000	108	239,000	109

¹Mortality limit – part of the Fishery Constant Exploitation Yield

²Mortality projection – not part of the Fishery Constant Exploitation Yield



Mortality Estimates with Greatest Uncertainty

Directed Commercial Discard Mortality – U.S.A.

- **Alaska**
 - inaccurate mean fish weight
 - No observer coverage for vessels less than 40 feet
 - Hook and line observer coverage is low (GOA and Bering Sea)

Recreational – Canada and U.S.A.

- Self reporting of lodges in BC and AK

Subsistence – Canada and U.S.A.

- Estimates not updated
 - since 2007 (Canada) and 2018 (U.S.A. – Alaska only)

Non-directed commercial discard mortality – Canada and U.S.A.

- Hook and line observer coverage is low in GOA and Bering Sea
- Non-pelagic trawl catcher vessel observer coverage is low in GOA



2020 Port Highlights

Tissue Sampling Coastwide

- 2019 samples completed and part of assessment

Chalky Pacific halibut

- Regular questionnaire throughout the season for processors – BESB

Economic Pacific halibut survey

<https://www.iphc.int/management/science-and-research/economic-research>

Canada

- Adding collection of marine mammal details to logbook – agreement with U.S.A. logbooks
- Prince Rupert – saw less landings this year than previous years' level as landings shifted to Port Hardy.



2020 Port Highlights

U.S.A.

- Reports of low prices
- Kodiak –saw less landings this year than previous years' level.
- Dutch Harbor – saw more landings this year – likely due to community closures for COVID.
- Whales continue to be of concern
 - Slinky pots use increasing



2020 Updates



Head-on requirement

- Implemented in 2017
- Fresh landings with head off
 - none in U.S.A.
 - Canada
 - **<0.4 tonnes (<1,000 lb or 0.02%) 2020**
 - **10.2 tonnes (22,597 lb or 0.4%) 2019**
 - **5.4 tonnes (11,821 lb or 0.2%) 2018**
 - **2.8 tonnes (6,186 lb or 0.1%) 2017**
- Frozen landings with head off
 - none in U.S.A.
 - Canada
 - 21.9 tonnes (48,277 lb or 1%) 2020
 - 24.7 tonnes (54,375 lb or 1%) 2019
 - 41.8 tonnes (92,148 lb or 2%) 2018
 - 35.6 tonnes (78,583 lb or 1%) 2017



2020 Updates

Use of pot gear

- Implemented in U.S.A. in 2017
- Landings with pot gear
 - Canada – n/a
 - U.S.A. (AK)
 - 32 tonnes (70,310 lb or 0.44%) 2020
 - 29 tonnes (63,726 lb or 0.36%) 2019
 - 23 tonnes (49,995 lb or 0.30%) 2018
 - 12 tonnes (27,025 lb or 0.14%) 2017
- Logs with pot gear
 - Canada
 - 1.2 tonnes (2,648 lb or 0.05%) 2020
 - 4.0 tonnes (8,825 lb or 0.2%) 2019
 - <1.0 tonnes (<100 lb or <0.01%) 2017
 - U.S.A. (AK)
 - 27.4 tonnes (60,477 lb or 0.4%) 2020
 - 26.8 tonnes (59,085 lb or 0.4%) 2019
 - 22.4 tonnes (49,308 lb or 0.3%) 2018
 - 12.2 tonnes (26,813 lb or 0.3%) 2017



2020 FISHERIES DATA SPECIALISTS (FIELD)



Jessica Marx
Homer



Binget Nilsson
Seward



Michele Drummond
Juneau



Darlene Haugan
Prince Rupert



Tachi Sopow
Sitka



Matthieu Fontaine
Petersburg



Dave Jackson
Kodiak



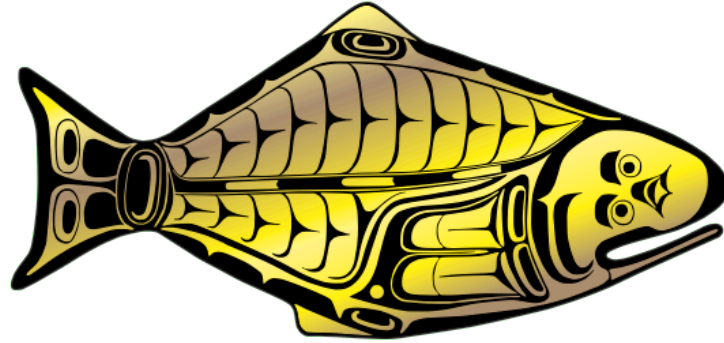
Jenni Rogge
Dutch Harbor



Chelsea Hutton
Port Hardy



INTERNATIONAL PACIFIC



HALIBUT COMMISSION

