

INTERNATIONAL PACIFIC



HALIBUT COMMISSION

Fishery-dependent data overview (2025): fisheries data

Agenda item: 4.1.2

IPHC-2026-AM102-07 Rev_1

(B. Hutniczak, H. Tran, T. Kong,
K. Sawyer Van Vleck, K. Magrane)



Purpose

The purpose of this presentation is to provide an overview of the 2025 Pacific halibut removals, including the status of mortality reported against mortality and fishery limits adopted by the Commission and outlined in the [IPHC Fishery Regulations \(2025\)](#).

- Data provided in this presentation include current data and end-of-year projections for 2025 as of 13 January 2026.
- In-season updates (1st and 15th of each month) are available at <https://www.iphc.int/data/fishery-limits-2025/>.



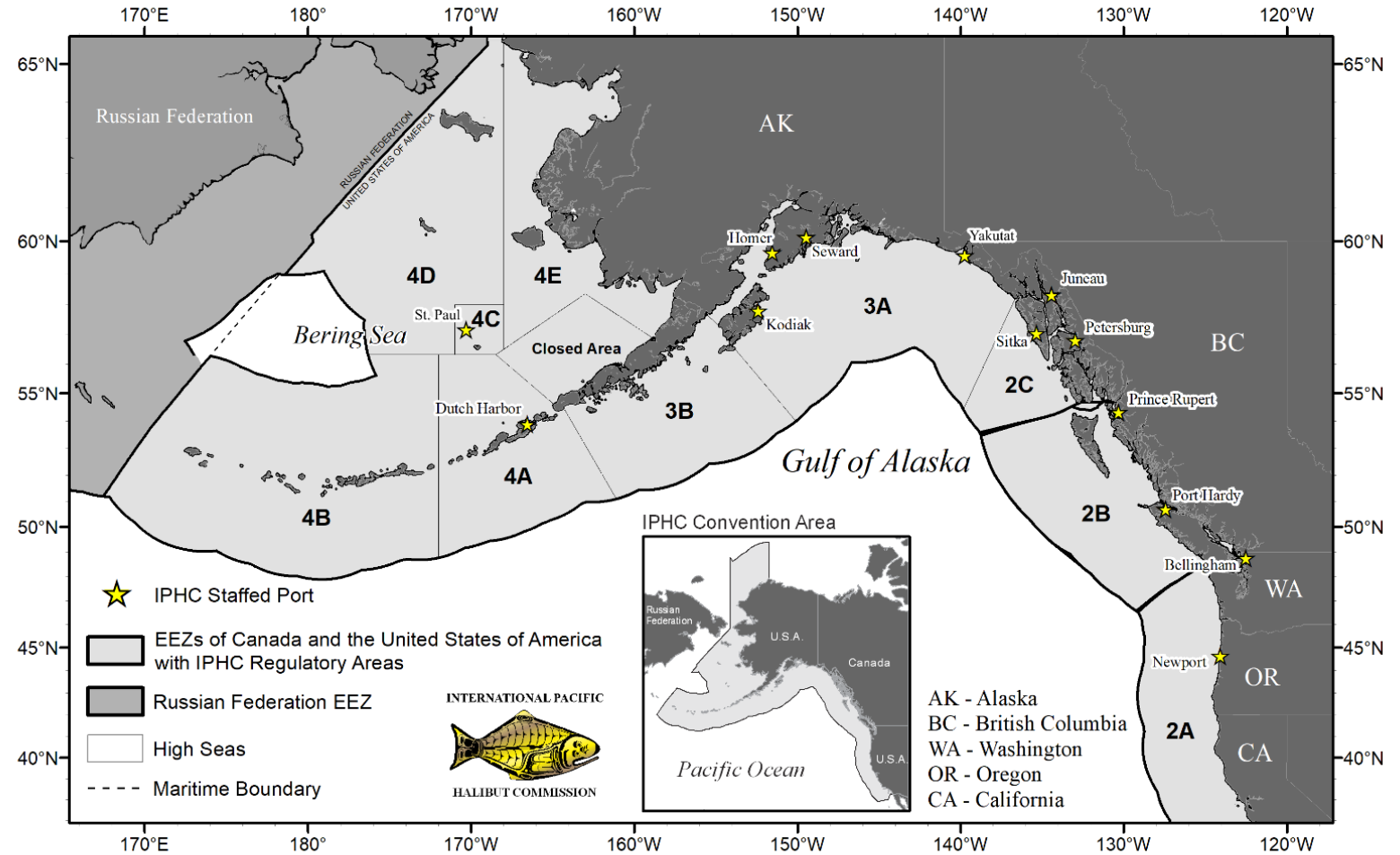
Total 2025 TCEY
estimated mortality:

12,083t

or

26.64 Mlb

(90% of the coastwide
TCEY)



Mortality estimates reported against mortality limits (TCEY) by IPHC Regulatory Area

| IPHC Regulatory Area | Mortality limit (TCEY) | | Mortality | | Percent attained [%] | Percent attained [%] |
|---|------------------------|-------------------|---------------|-------------------|----------------------|----------------------|
| | Tonnes (t) | Pounds (lb) | Tonnes (t) | Pounds (lb) | 2025 | 2024 [ref] |
| IPHC Regulatory Area 2A | 748 | 1,650,000 | 656 | 1,445,209 | 87.6 | 86.8 |
| IPHC Regulatory Area 2B | 2,472 | 5,450,000 | 2,391 | 5,270,541 | 96.7 | 98.3 |
| IPHC Regulatory Area 2C | 2,368 | 5,220,000 | 2,476 | 5,458,164 | 104.6 | 106.2 |
| IPHC Regulatory Area 3A | 4,119 | 9,080,000 | 3,864 | 8,519,520 | 93.8 | 92.6 |
| IPHC Regulatory Area 3B | 1,297 | 2,860,000 | 1,170 | 2,579,804 | 90.2 | 89.0 |
| IPHC Regulatory Area 4A | 608 | 1,340,000 | 457 | 1,006,617 | 75.1 | 61.5 |
| IPHC Regulatory Area 4B | 472 | 1,040,000 | 133 | 294,062 | 28.3 | 31.5 |
| IPHC Regulatory Area 4CDE and Closed Area | 1,397 | 3,080,000 | 937 | 2,065,392 | 67.1 | 61.3 |
| Subtotal (TCEY) | 13,481 | 29,720,000 | 12,083 | 26,639,309 | 89.6 | 88.4 |
| Non-directed commercial discard mortality (U26) | 862 | 1,900,000 | 757 | 1,669,000 | 87.8 | 111.9 |
| Total | 14,343 | 31,620,000 | 12,840 | 28,308,309 | 89.5 | 89.4 |



Overview by sector and area



Commercial fishery - IPHC Regulatory Area 2A – USA (WA, OR, CA)

Non-treaty directed commercial – three openers

Mortality = 120 t or 0.26 Mlb

- Estimated mortality at 102% of the fishery limit (↗ from 95%*)

Incidental commercial landings with salmon troll fishery

Mortality = 11 t or 0.02 Mlb

- Estimated mortality at 52% of the fishery limit (↘ from 69%*)

Incidental commercial landings with sablefish fishery

Mortality = 25 t or 0.05 Mlb

- Estimated mortality at 77% of the fishery limit (↗ from 69%*)

Treaty Indian directed commercial

Mortality = 219 t (0.48 Mlb)

- Estimated mortality at 93% of the fishery limit (↘ from 98%*)



** Reference based on 2024 data*



Commercial fishery - IPHC Regulatory Area 2B (Canada)

Fishery open 20 March to 7 December

2B directed commercial fishery - quota share fishery (2B)

Mortality = 1,776 t or 3.92 Mlb

- **Removals at 101% of the fishery limit (↗ from 95%*)**
- **Directed commercial sector** (includes discard mortality) mortality at 102% of the limit/projection (1,857 t or 4.09 Mlb)



** Reference based on 2024 data*



Commercial fishery - IPHC Regulatory Areas 2C to 4 (Alaska)

Fishery open 20 March to 7 December

Alaska directed commercial fishery - quota share fisheries (2C to 4)

Mortality = 5,267 t or 11.61 Mlb

- **Removals at 78% of the fishery limit (~ no change*)**
- **Directed commercial sector** (includes discard mortality, Metlakatla, & GAF) mortality at 80% of the limit/projection (5,723 t or 12.62 Mlb)

Annette Islands Reserve Fishery in IPHC Regulatory Area 2C

Mortality = 22 t or 0.05 Mlb

** Reference based on 2024 data*

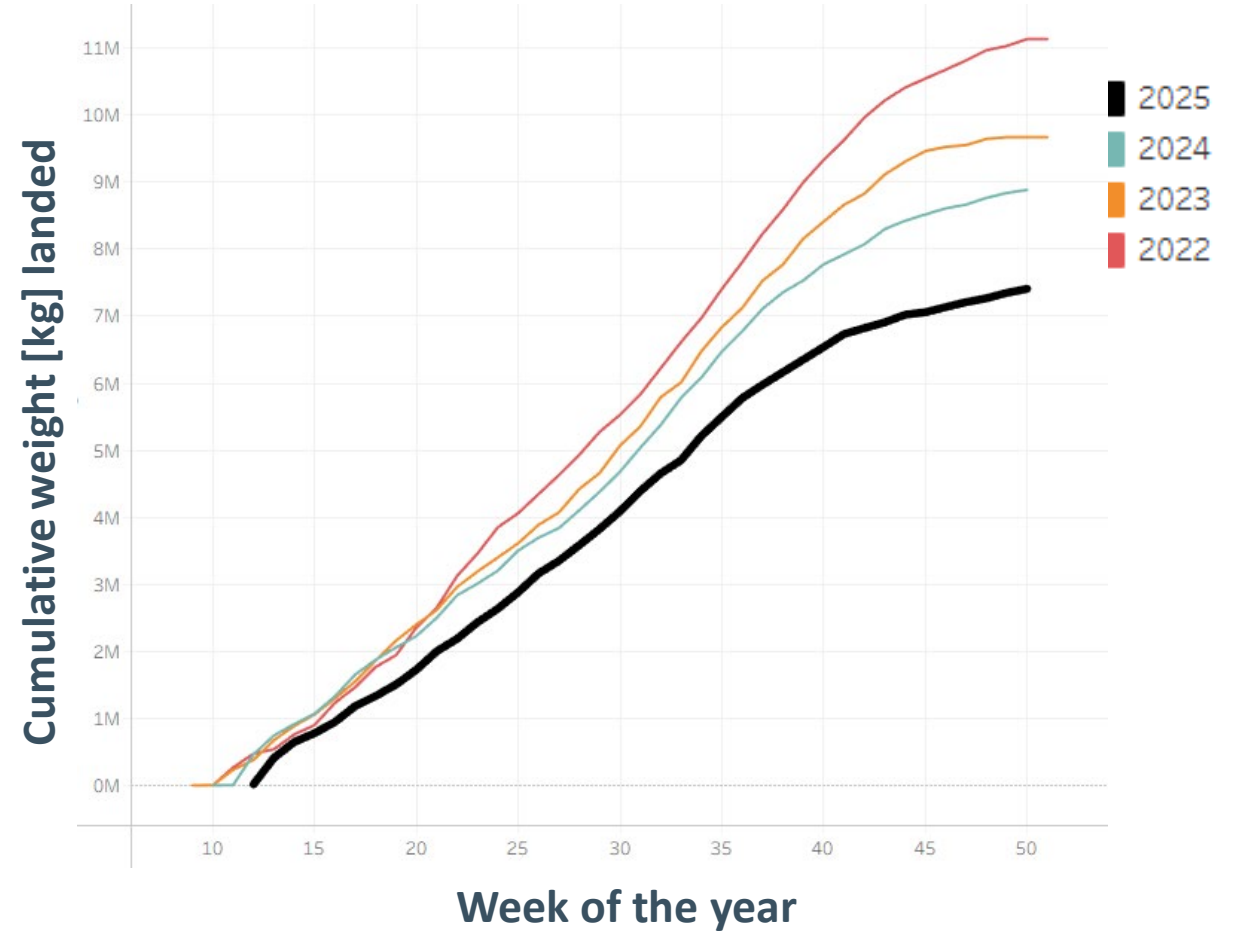
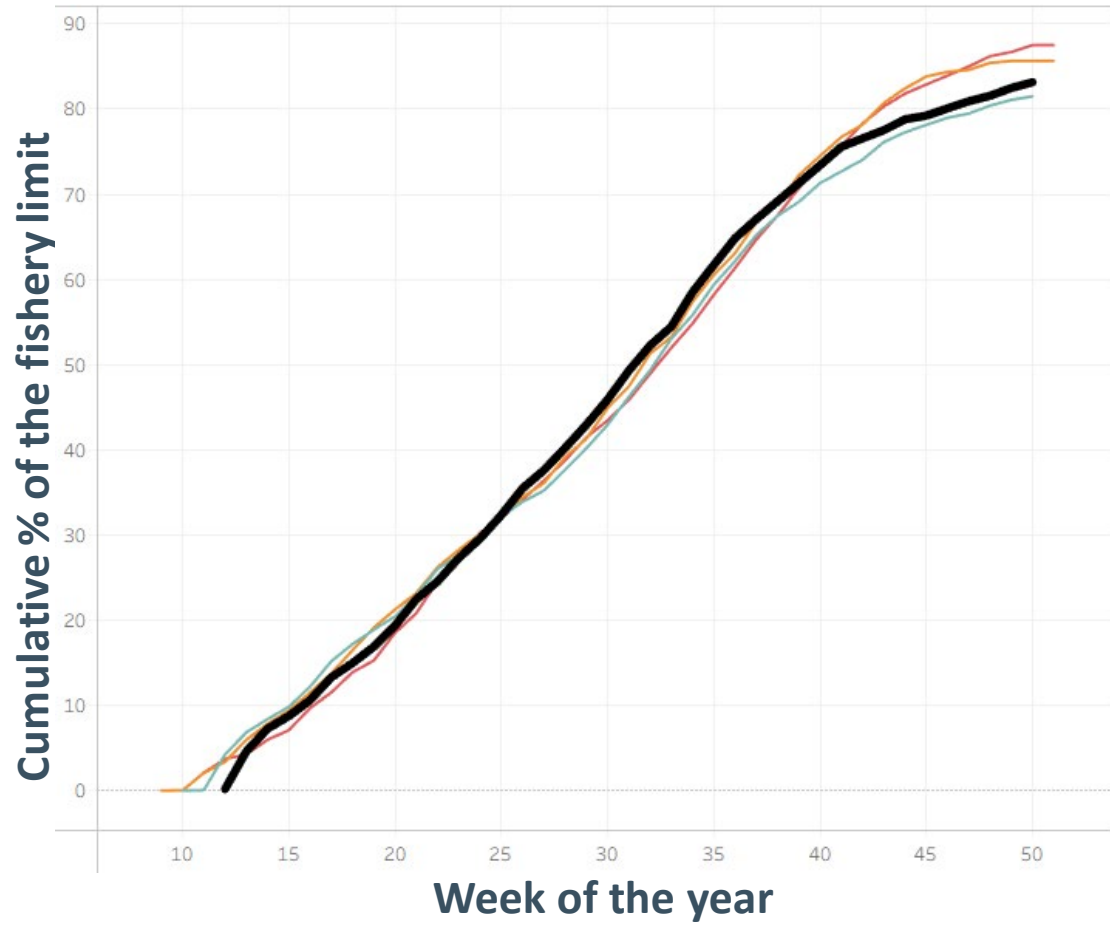


Table: Quota share fisheries in Alaska.

| IPHC Regulatory Area | Pct (%) landed 2025 | Pct (%) landed 2024* |
|----------------------|---------------------|----------------------|
| 2C | 85.3 | 87.6 |
| 3A | 92.2 | 90.9 |
| 3B | 88.0 | 88.3 |
| 4A | 66.7 | 55.2 |
| 4B | 20.3 | 26.3 |
| 4CDE | 33.4 | 39.4 |



Cumulative attainment of limits by directed commercial fishery – all areas



Recreational fishery - IPHC Regulatory Areas 2A & 2B

IPHC Regulatory Area 2A

Mortality = 218 t or 0.48 Mlb

- Estimated removals at 78% of the fishery limit (▼ from 84%*)

IPHC Regulatory Area 2B – Canada (BC)

Mortality = 230 t or 0.51 Mlb

- Estimated removals at 75% of the fishery limit (▼ from 101%*)
- Experimental Recreational Quota (XRQ) – postponed until further notice



** Reference based on 2024 data*



Recreational fishery - IPHC Regulatory Areas 2C to 4 (Alaska)

Unguided Sector (Alaska)

Mortality = 1,031 t or 2.27 Mlb

- Estimated removals at 120% of the fishery projection (↗ from 112%*)

Guided Sector (IPHC Regulatory Areas 2C and 3A)

Mortality = 966 t or 2.13 Mlb

- Estimated removals at 97% of the fishery limit (↗ from 92%*)
- IPHC Regulatory Area 2C mortality = 333 t or 0.73 Mlb (102% of the fishery limit)
- IPHC Regulatory Area 3A mortality = 633 t or 1.40 Mlb (94% of the fishery limit)

GAF (IPHC Regulatory Areas 2C and 3A)

- Estimated removals at 125 t or 0.28 Mlb



** Reference based on 2024 data*



Subsistence fisheries – all areas

Mortality = 373 t or 0.82 Mlb

1 January to 31 December

- **Estimated mortality at 101% of the fishery limit/projection (↗ from 100%*)**

USA – 2A (WA, OR, and CA)

- 7 t or 0.01 Mlb

Canada - rolled over since 2007

- 184 t or 0.41 Mlb

USA – Alaska - rolled over from 2023; 4CDE updated

- 183 t or 0.40 Mlb



** Reference based on 2024 data*



Non-directed commercial discard mortality (O26) – all areas

Mortality = 1,134 t or 2.50 Mlb

1 January to 31 December

- **Estimated mortality at 93% of the fishery projection (~ no change*)**

****previously projected 104%**

USA – 2A (WA, OR and CA)

- 23 t or 0.05 Mlb

Canada

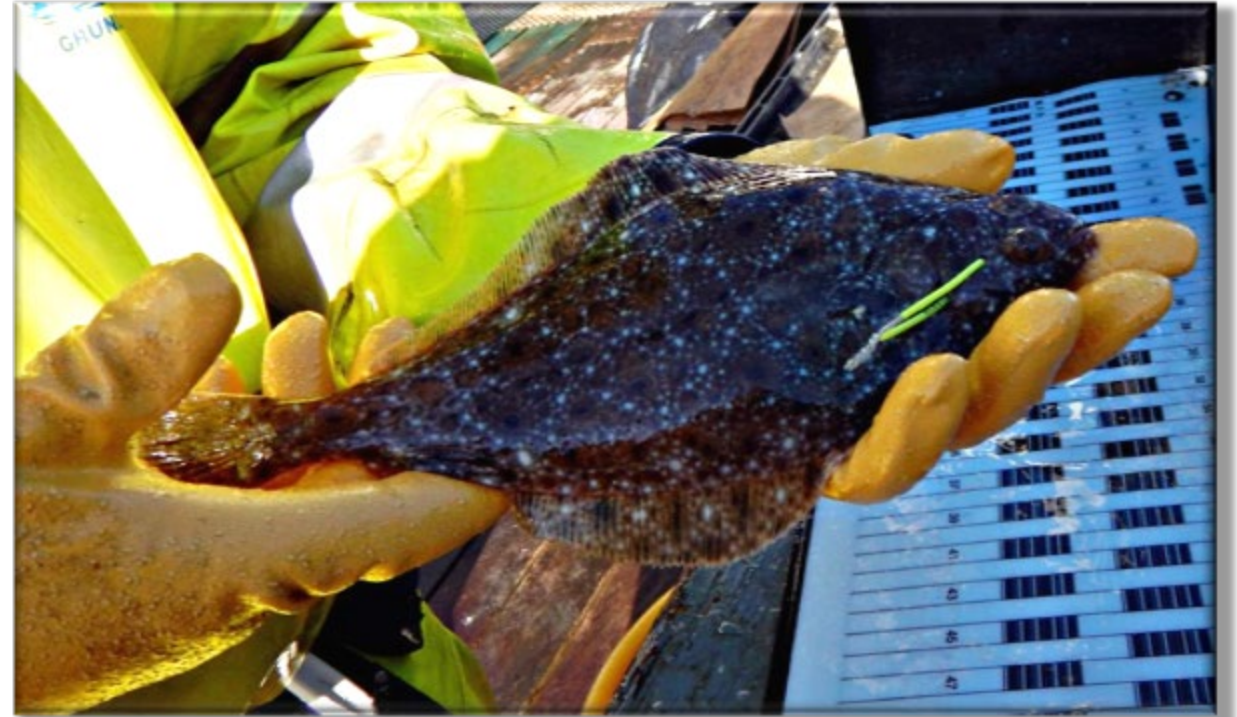
- 71 t or 0.16 Mlb

USA – Alaska

- **1,040 t or 2.29 Mlb**

****previously projected 1,170 t or 2.58 Mlb (Sep 2025)**

↘ due to lower estimate of trawl non-directed DM in IPHC Regulatory Areas 4CDE



** Reference based on 2024 data*



INTERNATIONAL PACIFIC
HALIBUT COMMISSION

Mortality estimates reported against mortality limits (TCEY) by sector

| Sector | Mortality limit (TCEY) | | Mortality | | Percent attained [%] | |
|--|------------------------|-------------------|---------------|-------------------|----------------------|-------------|
| | Tonnes (t) | Pounds (lb) | Tonnes (t) | Pounds (lb) | 2025 | 2024 [ref] |
| Directed commercial (landings and discard mortality) | 9,424 | 20,776,012 | 7,855 | 17,317,679 | 83.4 | 82.8 |
| Recreational (incl. GAF)* | 2,463 | 5,429,189 | 2,582 | 5,693,358 | 104.9 | 101.8 |
| Subsistence | 370 | 814,800 | 373 | 822,866 | 101.0 | 100.2 |
| Non-directed commercial discard mortality | 1,216 | 2,680,000 | 1,134 | 2,500,000 | 93.3 | 92.8 |
| IPHC FISS & Research | -- | -- | 139 | 305,406 | -- | -- |
| Total (TCEY) | 13,481 | 29,720,000 | 12,083 | 26,639,309 | 89.6 | 88.4 |
| Non-directed commercial discard mortality (U26) | 862 | 1,900,000 | 757 | 1,669,000 | 87.8 | 111.9 |

*99.8% when GAF mortality was excluded (2025)



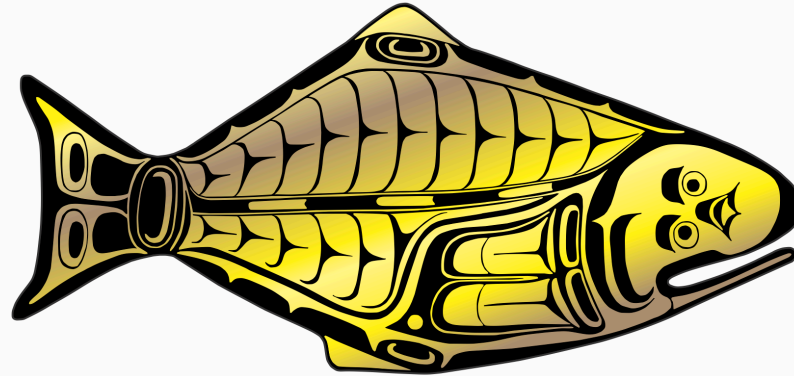
Recommendation

That the Commission:

- **NOTE** paper IPHC-2026-AM102-07 Rev_1 that provides the Commission with an overview of the 2025 Pacific halibut removals, including the status of mortality reported against mortality and fishery limits adopted by the Commission and outlined in the [IPHC Fishery Regulations \(2025\)](#).



INTERNATIONAL PACIFIC



HALIBUT COMMISSION

<https://www.iphc.int/>

