

INTERNATIONAL PACIFIC



HALIBUT COMMISSION

# Fishery-dependent data overview (2025): fisheries data

Agenda item: 4.1.2

IPHC-2025-IM101-07

(B. Hutniczak, H. Tran, T. Kong,  
K. Sawyer Van Vleck, K. Magrane)



# Purpose

The purpose of this presentation is to provide an overview of the 2025 Pacific halibut removals, including the status of mortality reported against mortality and fishery limits adopted by the Commission and outlined in the [IPHC Fishery Regulations \(2025\)](#).

- Data provided in this presentation include current data and end-of-year projections for 2025 as of 5 November 2025.
- In-season updates (1<sup>st</sup> and 15<sup>th</sup> of each month) are available at <https://www.iphc.int/data/fishery-limits-2025/>.



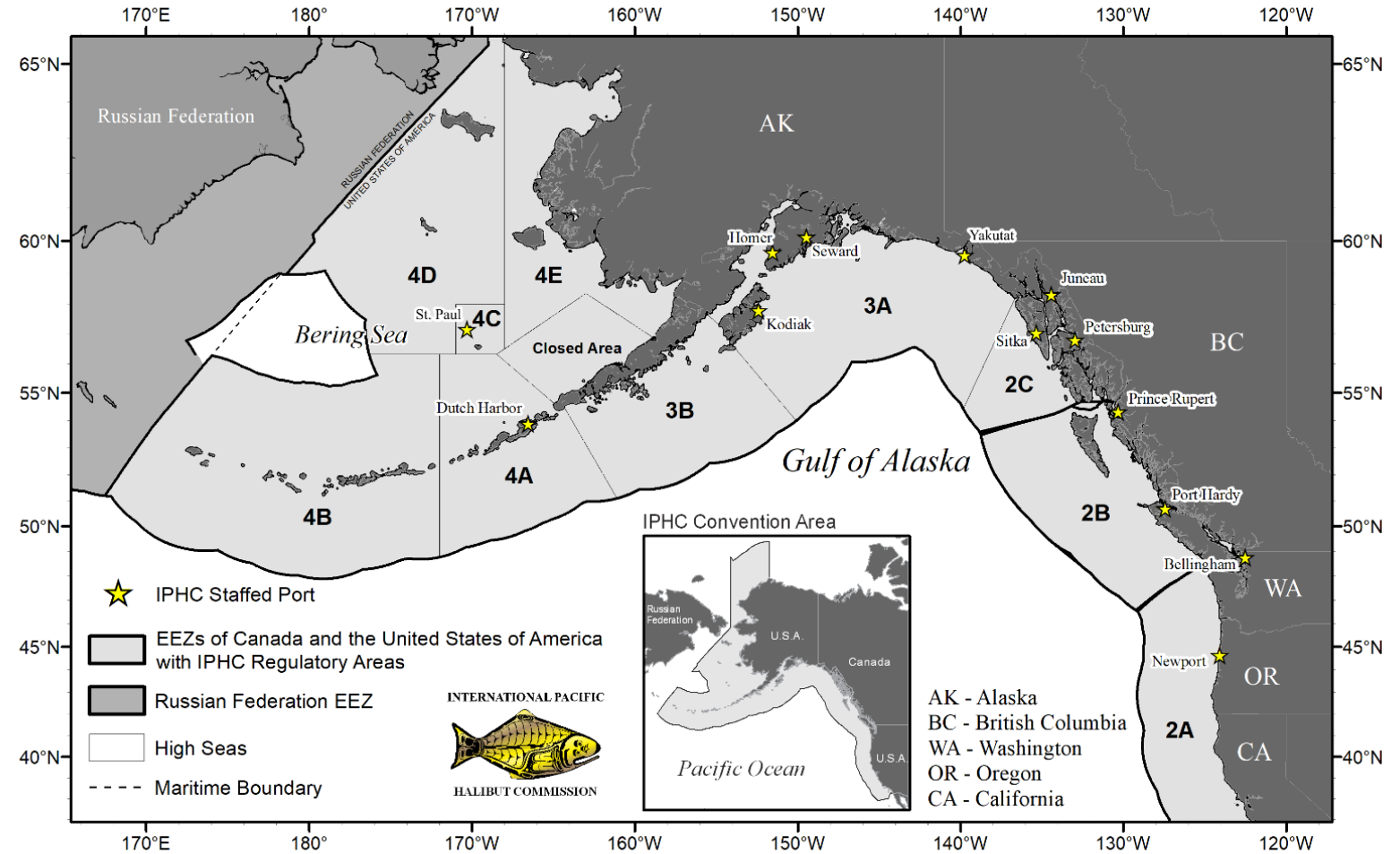
**Total 2025 TCEY  
projected mortality:**

12,247 t

or

27.00 Mlb

(91% of the coastwide  
TCEY)



# Mortality estimates reported against mortality limits (TCEY) by IPHC Regulatory Area

IPHC Regulatory Area	Mortality limit (TCEY)		Mortality		Percent attained [%]	Percent attained [%]
	Tonnes (t)	Pounds (lb)	Tonnes (t)	Pounds (lb)	2025	2024 [ref]
IPHC Regulatory Area 2A	748	1,650,000	682	1,503,310	91.1	86.8
IPHC Regulatory Area 2B	2,472	5,450,000	2,348	5,175,522	95.0	98.3
IPHC Regulatory Area 2C	2,368	5,220,000	2,468	5,441,978	104.3	106.2
IPHC Regulatory Area 3A	4,119	9,080,000	3,865	8,519,954	93.8	92.5
IPHC Regulatory Area 3B	1,297	2,860,000	1,173	2,586,540	90.4	88.9
IPHC Regulatory Area 4A	608	1,340,000	465	1,025,172	76.5	61.5
IPHC Regulatory Area 4B	472	1,040,000	148	325,380	31.3	31.5
IPHC Regulatory Area 4CDE and Closed Area	1,397	3,080,000	1,099	2,422,289	78.6	61.3
Subtotal (TCEY)	<b>13,481</b>	<b>29,720,000</b>	<b>12,247</b>	<b>27,000,145</b>	<b>90.8</b>	<b>88.3</b>
Non-directed commercial discard mortality (U26)	862	1,900,000	845	1,862,000	98.0	111.1
Total	<b>14,343</b>	<b>31,620,000</b>	<b>13,092</b>	<b>28,862,145</b>	<b>91.3</b>	<b>89.3</b>



# Overview by sector and area





# Commercial fishery - IPHC Regulatory Area 2A – USA (WA, OR, CA)

## Non-treaty directed commercial – three openers

Mortality = 120 t or 0.26 Mlb

- Estimated mortality at 102% of the fishery limit (↗ from 95%\*)

## Incidental commercial landings with salmon troll fishery

Mortality = 11 t or 0.02 Mlb

- Estimated mortality at 52% of the fishery limit (↘ from 69%\*)

## Incidental commercial landings with sablefish fishery

Mortality = 32 t or 0.07 Mlb

- Estimated mortality at 100% of the fishery limit (↗ from 69%\*)

## Treaty Indian directed commercial

Mortality = 236 t (0.52 Mlb)

- Estimated mortality at 100% of the fishery limit (↗ from 98%\*)



*\* Reference based on 2024 data*



# Commercial fishery - IPHC Regulatory Area 2B (Canada) and 2C to 4 (Alaska)

Fishery open 20 March to 7 December

## 2B directed commercial fishery - quota share fishery (2B)

Mortality = 1,728 t or 3.81 Mlb

- **Projected removals at 99% of the fishery limit (↗ from 95%\*)**
- **Directed commercial sector** (includes discard mortality) mortality at 99 % of the limit/projection (1,807 t or 3.98 Mlb)

## Alaska directed commercial fishery - quota share fisheries (2C to 4)

Mortality = 5,314 t or 11.72 Mlb

- **Projected removals at 78% of the fishery limit (~ no change\*)**
- **Directed commercial sector** (includes discard mortality, Metlakatla, & GAF) mortality at 79% of the limit/projection (5,646 t or 12.45 Mlb)

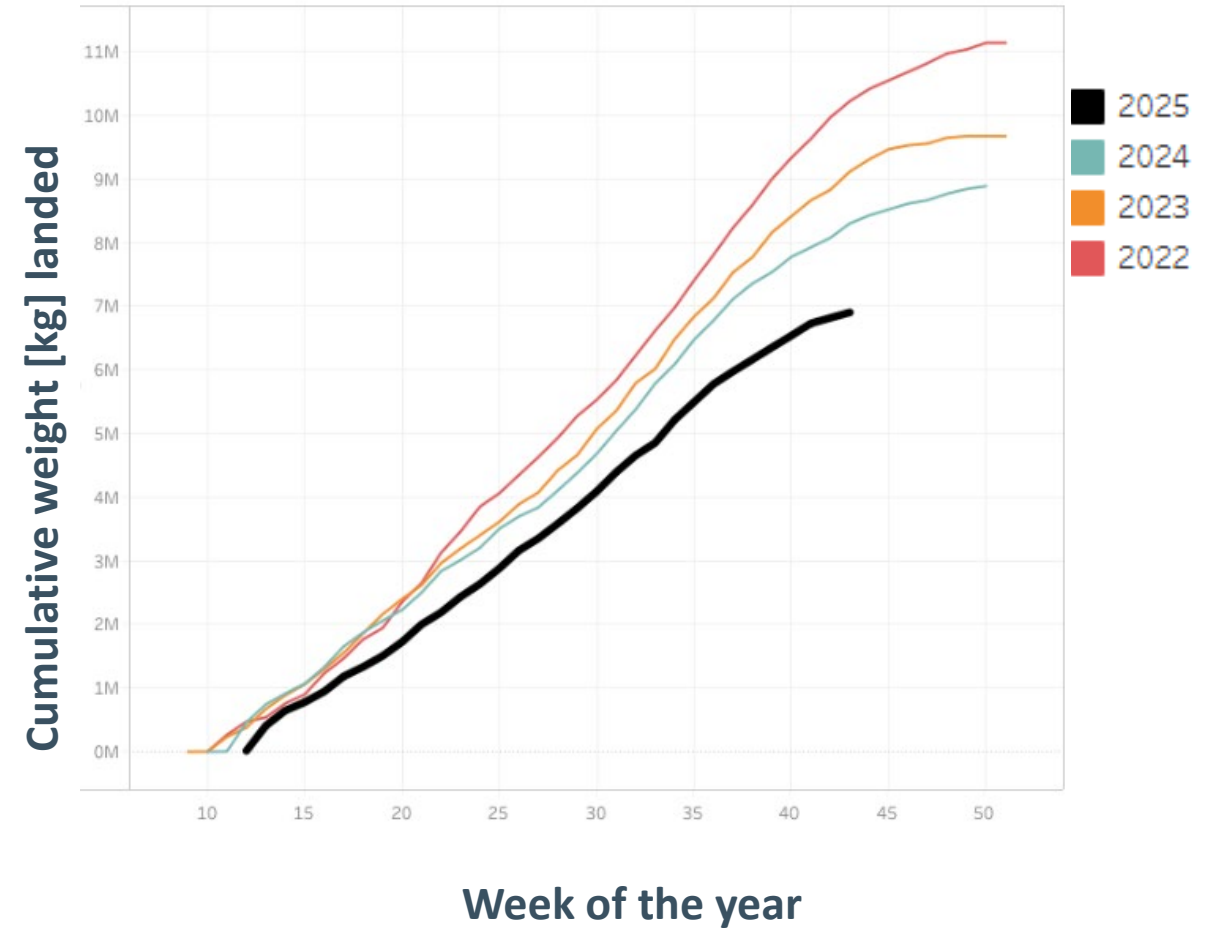
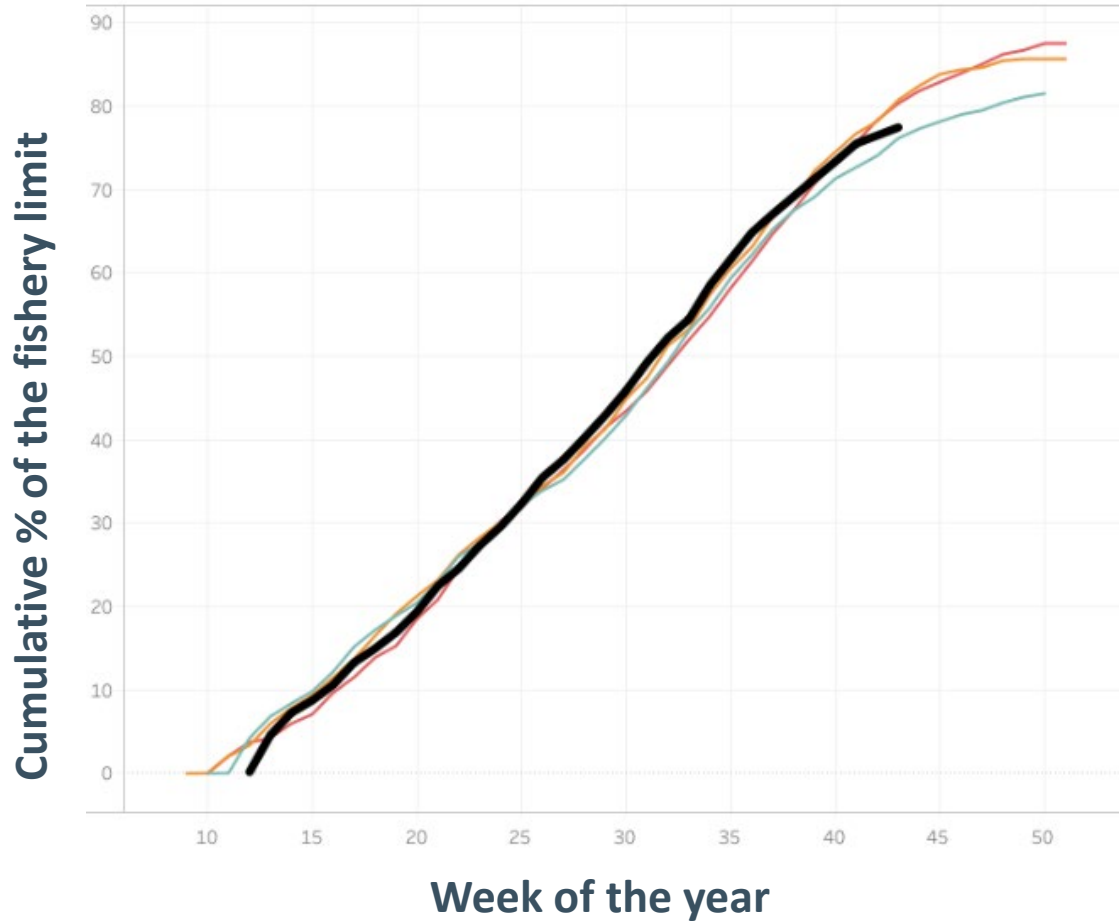
## Annette Island Reserve Fishery in IPHC Regulatory Area 2C

Mortality = 22 t or 0.05 Mlb

*\* Reference based on 2024 data*



# Cumulative attainment of limits by directed commercial fishery – all areas





# Recreational fishery - IPHC Regulatory Areas 2A & 2B

## IPHC Regulatory Area 2A

Mortality = 218 t or 0.48 Mlb

- Estimated removals at 78% of the fishery limit (▼ from 84%\*)

## IPHC Regulatory Area 2B – Canada (BC)

Mortality = 240 t or 0.53 Mlb

- Estimated removals at 78% of the fishery limit (▼ from 101%\*)
- Experimental Recreational Quota (XRQ) – postponed until further notice



*\* Reference based on 2024 data*



# Recreational fishery - IPHC Regulatory Areas 2C to 4 (Alaska)

## Unguided Sector (Alaska)

Mortality = 1,031 t or 2.27 Mlb

- Estimated removals at 120% of the fishery projection (↗ from 112%\*)

## Guided Sector (IPHC Regulatory Areas 2C and 3A)

Mortality= 966 t or 2.13 Mlb

- Estimated removals at 97% of the fishery limit (↗ from 92%\*)

## GAF (IPHC Regulatory Areas 2C and 3A)

Estimated removals at 127 t or 0.28 Mlb



*\* Reference based on 2024 data*



# Subsistence fisheries – all areas

**Mortality = 373 t or 0.82 Mlb**

1 January to 31 December

- **Estimated mortality at 101% of the fishery limit/projection (↗ from 100%\*)**

**USA – 2A (WA, OR, and CA)**

- 7 t or 0.01 Mlb

**Canada - rolled over since 2007**

- 184 t or 0.41 Mlb

**USA – Alaska - rolled over from 2023; 4CDE updated**

- 183 t or 0.40 Mlb



*\* Reference based on 2024 data*





# Non-directed commercial discard mortality (O26) – all areas

**Mortality = 1,261 t or 2.78 Mlb**

1 January to 31 December

- **Estimated mortality at 104% of the fishery projection (↗ from 92%\*)**

**USA – 2A (WA, OR and CA)**

- 23 t or 0.05 Mlb

**Canada**

- 68 t or 0.15 Mlb

**USA – Alaska**

- 1,170 t or 2.58 Mlb



*\* Reference based on 2024 data*



# Mortality estimates reported against mortality limits (TCEY) by sector

Sector	Mortality limit (TCEY)		Mortality		Percent attained [%]	
	Tonnes (t)	Pounds (lb)	Tonnes (t)	Pounds (lb)	2025	2024 [ref]
Directed commercial (landings and discard mortality)	9,424	20,776,012	7,880	17,372,144	83.6	82.8
Recreational	2,463	5,429,189	2,594	5,718,729	105.3	101.8
Subsistence	370	814,800	373	822,866	101.0	100.2
Non-directed commercial discard mortality	1,216	2,680,000	1,261	2,781,000	103.8	92.2
IPHC FISS & Research	--	--	139	305,406	--	--
<b>Total (TCEY)</b>	<b>13,481</b>	<b>29,720,000</b>	<b>12,247</b>	<b>27,000,145</b>	<b>90.8</b>	<b>88.3</b>
Non-directed commercial discard mortality (U26)	862	1,900,000	845	1,862,000	98.0	111.1





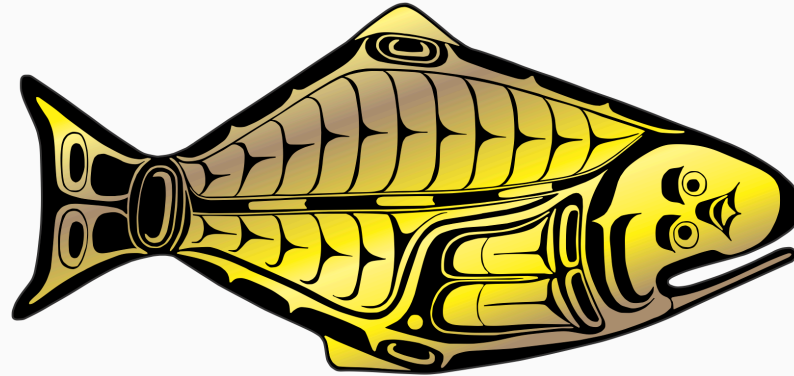
# Recommendation

That the Commission:

- **NOTE** paper IPHC-2025-IM101-07 Rev\_1 that provides the Commission with a preliminary overview of the 2025 Pacific halibut removals, including the status of mortality reported against mortality and fishery limits adopted by the Commission and outlined in the [IPHC Fishery Regulations \(2025\)](#).



**INTERNATIONAL PACIFIC**



**HALIBUT COMMISSION**

<https://www.iphc.int/>

