



10 February 2018

IPHC CIRCULAR 2018-002

Dear Commissioners,

SUBJECT: REQUEST FOR AN INTERSESSIONAL DECISION ON THE REVISION TO THE PACIFIC HALIBUT FISHERY REGULATIONS 2018

Recalling that at the 94th Annual Meeting of the IPHC (AM094), the Commission made the following recommendation for action to the IPHC Secretariat:

Review of the draft and adoption of the report of the 94th Session of the IPHC Annual Meeting (AM094)

(AM094, [draft] para. 139) *“The Commission **REQUESTED** that the IPHC Secretariat finalise and publish the IPHC Pacific Halibut Fishery Regulations (2018) no later than 28 February 2018, **NOTING** that only minor editorial and formatting changes are permitted beyond the decisions made by the Commission at the AM094.”*

please find attached the revised regulations, with all revisions shown in tracked-changes, for your consideration and approval. Please note that, pursuant to the following agreement from the AM094, all catch limits in this revision are unchanged from 2017 values:

Catch limits

(AM094, [draft] para. 126) *“The Commission **AGREED** that due to the lack of agreement on catch limits for 2018, that the status quo catch limits set for the 2017 fishing periods will apply for 2018, until such a time as the Contracting Parties apply more restrictive measures as permitted in the IPHC Convention.”*

Please also note that agency staff from both governments have reviewed and approved the changes incorporated in the attached revision.

As this is a time-sensitive decision, I respectfully request that you expedite your approval via email. Specifically, please provide your response in one of the following forms:

- 1) I **ENDORSE** the revised Pacific halibut fishery regulations 2018.
- 2) I **DO NOT ENDORSE** the revised Pacific halibut fishery regulations 2018.

Yours sincerely,

Dr. David T. Wilson
Executive Director, IPHC

Attachments:

Attachment I: Revised Pacific halibut fishery regulations 2018



INTERNATIONAL PACIFIC
HALIBUT COMMISSION

INTERNATIONAL PACIFIC HALIBUT COMMISSION

**Pacific
Halibut Fishery
Regulations
2017-2018**

INTERNATIONAL PACIFIC HALIBUT COMMISSION
2320 WEST COMMODORE WAY, SUITE 300
SEATTLE, WASHINGTON 98199-1287
PHONE: (206) 634-1838
FAX: (206) 632-2983
WEBSITE: www.iphc.int

[2017-2018 IPHC regulations](#)

This ~~pamphlet document~~ is intended for informational purposes only. Official regulations of the respective ~~countries~~ eContracting pParties can be found in:

For Canada: The Canada Gazette and the Condition of Licence

For the USA: The Federal Register

~~For Canada: The Canada Gazette and the Condition of License~~

Contents

Commented [SK1]: To be updated in final edit

1. Short Title

These Regulations may be cited as the Pacific Halibut Fishery Regulations.

2. Application

- (1) These Regulations apply to persons and vessels fishing for [Pacific](#) halibut in, or possessing [Pacific](#) halibut taken from, the maritime area as defined in Section 3.
- (2) Sections 3 to ~~6-7~~ apply generally to all [Pacific](#) halibut fishing.
- (3) Sections ~~7-8~~ to ~~20-21~~ apply to commercial fishing for [Pacific](#) halibut.
- (4) Section ~~24-22~~ applies to tagged [Pacific](#) halibut caught by any vessel.
- (5) Section ~~22-23~~ applies to the United States treaty Indian fishery in Subarea 2A-1.
- (6) Section ~~22-24~~ applies to customary and traditional fishing in Alaska.
- (7) Section ~~24-25~~ applies to Aboriginal groups fishing for food, social and ceremonial purposes in British Columbia.
- (8) Sections ~~25-26~~ to ~~28-29~~ apply to sport fishing for [Pacific](#) halibut.
- (9) These Regulations do not apply to fishing operations authorized or conducted by the Commission for research purposes.

3. Definitions

- (1) In these Regulations,
 - (a) “authorized officer” means any State, Federal, or Provincial officer authorized to enforce these Regulations including, but not limited to, the National Marine Fisheries Service (NMFS), Canada’s Department of Fisheries and Oceans (DFO), Alaska Wildlife Troopers (AWT), United States Coast Guard (USCG), Washington Department of Fish and Wildlife (WDFW), the Oregon State Police (OSP), and California Department of Fish and Wildlife (CDFW);
 - (b) “authorized clearance personnel” means an authorized officer of the United States, a representative of the Commission, or a designated fish processor;
 - (c) “charter vessel” outside of Alaska waters means a vessel used for hire in sport fishing for [Pacific](#) halibut, but not including a vessel without a hired operator, and in Alaska waters means a vessel used while providing or receiving sport fishing guide services for [Pacific](#) halibut;
 - (d) “commercial fishing” means fishing, the resulting catch of which is sold or bartered; or is intended to be sold or bartered, other than i) sport fishing, ii) treaty Indian ceremonial and subsistence fishing as referred to in section ~~22-23~~, iii) customary and traditional fishing as referred to in section ~~22-24~~ and defined by and regulated pursuant to NMFS regulations published at 50 CFR Part 300, and iv) Aboriginal groups fishing in British Columbia as referred to in section ~~24-25~~;
 - (e) “Commission” or “IPHC” means the International Pacific Halibut Commission;
 - (f) “daily bag limit” means the maximum number of [Pacific](#) halibut a person may take in any calendar day from Convention waters;

- (g) “fishing” means the taking, harvesting, or catching of fish, or any activity that can reasonably be expected to result in the taking, harvesting, or catching of fish, including specifically the deployment of any amount or component part of gear anywhere in the maritime area;
 - (h) “fishing period limit” means the maximum amount of [Pacific](#) halibut that may be retained and landed by a vessel during one fishing period;
 - (i) “land” or “offload” with respect to [Pacific](#) halibut, means the removal of halibut from the catching vessel;
 - (j) “license” means a [Pacific](#) halibut fishing license issued by the Commission pursuant to section [45](#);
 - (k) “maritime area”, in respect of the fisheries jurisdiction of a Contracting Party, includes without distinction areas within and seaward of the territorial sea and internal waters of that Party;
 - (l) “net weight” of a [Pacific](#) halibut means the weight of [Pacific](#) halibut that is without gills and entrails, head-off, washed, and without ice and slime. If a [Pacific](#) halibut is weighed with the head on or with ice and slime, the required conversion factors for calculating net weight are a 2 percent deduction for ice and slime and a 10 percent deduction for the head;
 - (m) “operator”, with respect to any vessel, means the owner and/or the master or other individual on board and in charge of that vessel;
 - (n) “overall length” of a vessel means the horizontal distance, rounded to the nearest foot, between the foremost part of the stem and the aftermost part of the stern (excluding bowsprits, rudders, outboard motor brackets, and similar fittings or attachments);
 - (o) “person” includes an individual, corporation, firm, or association;
 - (p) “regulatory area” means an [IPHC Regulatory Area](#) referred to in section [67](#);
 - (q) “setline gear” means one or more stationary, buoyed, and anchored lines with hooks attached;
 - (r) “sport fishing” or “recreational fishing” means all fishing other than i) commercial fishing, ii) treaty Indian ceremonial and subsistence fishing as referred to in section [2223](#), iii) customary and traditional fishing as referred to in section [23-24](#) and defined in and regulated pursuant to NMFS regulations published in 50 CFR Part 300, and iv) Aboriginal groups fishing in British Columbia as referred to in section [2425](#);
 - (s) “tender” means any vessel that buys or obtains fish directly from a catching vessel and transports it to a port of landing or fish processor;
 - (t) “VMS transmitter” means a NMFS-approved vessel monitoring system transmitter that automatically determines a vessel’s position and transmits it to a NMFS-approved communications service provider.¹
- (2) In these Regulations, all bearings are true and all positions are determined by the most recent charts issued by the United States National Ocean Service or the Canadian Hydrographic Service.

¹ Call NOAA Enforcement Division, Alaska Region, at 907-586-7225 between the hours of 0800 and 1600 local time for a list of NMFS-approved VMS transmitters and communications service providers.

4. Limits

(1) The fishery limits resulting from the IPHC-adopted values and the ~~domestic~~ Contracting Party ~~agency~~ catch sharing arrangements are as follows:

IPHC Regulatory Area	fishery limits (net weight)	
	pounds (lbs)	metric tons (t)
Area 2A (California, Oregon, and Washington)	1,330,000	603.28
Non-treaty directed commercial (south of Pt. Chehalis)	225,591	102.33
Non-treaty incidental catch in salmon troll fishery	39,810	18.06
Non-treaty incidental catch in sablefish fishery (north of Pt. Chehalis)	70,000	31.75
Treaty Indian commercial	435,900	197.72
Treaty Indian ceremonial and subsistence (year-round)	29,600	13.43
Recreational – Washington	237,762	107.85
Recreational – Oregon	256,757	116.46
Recreational – California	34,580	15.69
Area 2B (British Columbia) (includes recreational catch allocation)	7,450,000	3,379.27
Area 2C (southeastern Alaska) (combined commercial/guided recreational)	5,250,000	2,381.36
Commercial fishery (4,212,000 catch and 123,000 incidental mortality)	4,335,000	1,966.33
Guided recreational fishery (includes catch and incidental mortality)	915,000	415.04
Area 3A (central Gulf of Alaska) (combined commercial/guided recreational)	10,000,000	4,535.93
Commercial fishery (7,739,000 catch and 371,000 incidental mortality)	8,110,000	3,678.64
Guided recreational fishery (includes catch and incidental mortality)	1,890,000	857.29
Area 3B (western Gulf of Alaska)	3,140,000	1,424.28
Area 4A (eastern Aleutians)	1,390,000	630.49
Area 4B (central/western Aleutians)	1,140,000	517.10
Areas 4CDE	1,700,000	771.11
Area 4C (Pribilof Islands)	752,000	341.10
Area 4D (northwestern Bering Sea)	752,000	341.10
Area 4E (Bering Sea flats)	196,000	88.90
Total	31,400,000	14,242.82

54. Licensing Vessels for IPHC Regulatory Area 2A

- (1) No person shall fish for [Pacific](#) halibut from a vessel, nor possess [Pacific](#) halibut on board a vessel, used either for commercial fishing or as a charter vessel in [IPHC Regulatory Area 2A](#), unless the Commission has issued a license valid for fishing in [IPHC Regulatory Area 2A](#) in respect of that vessel.
- (2) A license issued for a vessel operating in [IPHC Regulatory Area 2A](#) shall be valid only for operating either as a charter vessel or a commercial vessel, but not both.
- (3) A vessel with a valid [IPHC Regulatory Area 2A](#) commercial license cannot be used to sport fish for Pacific halibut in [IPHC Regulatory Area 2A](#).
- (4) A license issued for a vessel operating in the commercial fishery in Area 2A shall be valid for one of the following:
 - (a) the directed commercial fishery during the fishing periods specified in paragraph (2) of section ~~89~~;
 - (b) the incidental catch fishery during the sablefish fishery specified in paragraph (3) of section ~~89~~; or
 - (c) the incidental catch fishery during the salmon troll fishery specified in paragraph (4) of section ~~89~~.
- (5) No person may apply for or be issued a license for a vessel operating in the incidental catch fishery during the salmon troll fishery in paragraph (4)(c), if that vessel was previously issued a license for either the directed commercial fishery in paragraph (4)(a) or the incidental catch fishery during the sablefish fishery in paragraph (4)(b).
- (6) A license issued in respect to a vessel referred to in paragraph (1) of this section must be carried on board that vessel at all times and the vessel operator shall permit its inspection by any authorized officer.
- (7) The Commission shall issue a license in respect to a vessel, without fee, from its office in Seattle, Washington, upon receipt of a completed, written, and signed "Application for Vessel License for the [Pacific Halibut Fishery](#)" form.
- (8) A vessel operating in the directed commercial fishery in [IPHC Regulatory Area 2A](#) must have its "Application for Vessel License for the [Pacific Halibut Fishery](#)" form postmarked no later than ~~4:23~~59 ~~hours PM~~ [local time](#) on 30 April, or ~~on~~ the first weekday in May if 30 April is a Saturday or Sunday.
- (9) A vessel operating in the incidental catch fishery during the sablefish fishery in [IPHC Regulatory Area 2A](#) must have its "Application for Vessel License for the [Pacific Halibut Fishery](#)" form postmarked no later than ~~4:23~~59 ~~hours local time PM~~ on 15 March, or the next weekday in March if 15 March is a Saturday or Sunday.
- (10) A vessel operating in the incidental catch fishery during the salmon troll fishery in [IPHC Regulatory Area 2A](#) must have its "Application for Vessel License for the [Pacific Halibut Fishery](#)" form postmarked no later than ~~4:23~~59 ~~hours local time PM~~ on 15 March, or the next weekday in March if 15 March is a Saturday or Sunday.
- (11) Application forms may be obtained from any authorized officer or from the ~~Commission~~ [IPHC Secretariat](#).
- (12) Information on "Application for Vessel License for the [Pacific Halibut Fishery](#)" form must be accurate.
- (13) The "Application for Vessel License for the [Pacific Halibut Fishery](#)" form shall be completed and signed by the vessel owner.

- (14) Licenses issued under this section shall be valid only during the year in which they are issued.
- (15) A new license is required for a vessel that is sold, transferred, renamed, or the documentation is changed.
- (16) The license required under this section is in addition to any license, however designated, that is required under the laws of the United States or any of its States.
- (17) The United States may suspend, revoke, or modify any license issued under this section under policies and procedures in U.S. Code Title 15, CFR Part 904.

65. In-Season Actions

- (1) The Commission is authorized to establish or modify regulations during the season after determining that such action:
 - (a) will not result in exceeding the catch limit established preseason for each IPHC Regulatory Area;
 - (b) is consistent with the Convention between Canada and the United States of America for the Preservation of the Halibut Fishery of the Northern Pacific Ocean and Bering Sea, and applicable domestic law of either Canada or the United States of America; and
 - (c) is consistent, to the maximum extent practicable, with any domestic catch sharing plans or other domestic allocation programs developed by the United States or Canadian governments.
- (2) In-season actions may include, but are not limited to, establishment or modification of the following:
 - (a) closed areas;
 - (b) fishing periods;
 - (c) fishing period limits;
 - (d) gear restrictions;
 - (e) recreational bag limits;
 - (f) size limits; or
 - (g) vessel clearances.
- (3) In-season changes will be effective at the time and date specified by the Commission.
- (4) The Commission will announce in-season actions under this section by providing notice to major Pacific halibut processors; Federal, State, United States treaty Indian, and Provincial fishery officials; and the media.

76. Regulatory Areas

The following areas shall be IPHC Regulatory Areas (see Figure 1) for the purposes of the Convention:

- (1) IPHC Regulatory Area 2A includes all waters off the states of California, Oregon, and Washington;
- (2) IPHC Regulatory Area 2B includes all waters off British Columbia;

- (3) [IPHC Regulatory Area 2C](#) includes all waters off Alaska that are east of a line running 340° true from Cape Spencer Light (58°11'56" N. latitude, 136°38'26" W. longitude) and south and east of a line running 205° true from said light;
- (4) [IPHC Regulatory Area 3A](#) includes all waters between Area 2C and a line extending from the most northerly point on Cape Aklek (57°41'15" N. latitude, 155°35'00" W. longitude) to Cape Ikolik (57°17'17" N. latitude, 154°47'18" W. longitude), then along the Kodiak Island coastline to Cape Trinity (56°44'50" N. latitude, 154°08'44" W. longitude), then 140° true;
- (5) [IPHC Regulatory Area 3B](#) includes all waters between Area 3A and a line extending 150° true from Cape Lutke (54°29'00" N. latitude, 164°20'00" W. longitude) and south of 54°49'00" N. latitude in Isanotski Strait;
- (6) [IPHC Regulatory Area 4A](#) includes all waters in the Gulf of Alaska west of Area 3B and in the Bering Sea west of the closed area defined in section 10 that are east of 172°00'00" W. longitude and south of 56°20'00" N. latitude;
- (7) [IPHC Regulatory Area 4B](#) includes all waters in the Bering Sea and the Gulf of Alaska west of [IPHC Regulatory Area 4A](#) and south of 56°20'00" N. latitude;
- (8) [IPHC Regulatory Area 4C](#) includes all waters in the Bering Sea north of [IPHC Regulatory Area 4A](#) and north of the closed area defined in section 10 which are east of 171°00'00" W. longitude, south of 58°00'00" N. latitude, and west of 168°00'00" W. longitude;
- (9) [IPHC Regulatory Area 4D](#) includes all waters in the Bering Sea north of [IPHC Regulatory Areas 4A and 4B](#), north and west of [IPHC Regulatory Area 4C](#), and west of 168°00'00" W. longitude; and
- (10) Area 4E includes all waters in the Bering Sea north and east of the closed area defined in section 10, east of 168°00'00" W. longitude, and south of 65°34'00" N. latitude.

87. Fishing in Regulatory [IPHC Regulatory Areas 4E and 4D](#)

- (1) Section ~~7~~8 applies only to any person fishing for, or any vessel that is used to fish for, [IPHC Regulatory Area 4E Community Development Quota \(CDQ\) Pacific halibut](#), ~~or~~ [IPHC Regulatory Area 4D CDQ Pacific halibut](#), or [IPHC Regulatory Area 4D IFQ received by transfer by a CDQ organization](#) provided that the total annual halibut catch of that person or vessel is landed at a port within [IPHC Regulatory Areas 4E or 4D](#).
- (2) A person may retain [Pacific halibut](#) taken with setline gear ~~in the Area 4E CDQ and 4D CDQ fishery~~ that are smaller than the size limit specified in section ~~13~~14, provided that no person may sell or barter such [Pacific halibut](#).
- (3) The manager of a CDQ organization that authorizes persons to harvest [Pacific halibut](#) in the [IPHC Regulatory Area 4E or 4D CDQ fisheries](#) or [IFQ received by transfer by a CDQ organization](#) must report to the Commission the total number and weight of undersized [Pacific halibut](#) taken and retained by such persons pursuant to section ~~7~~8, paragraph (2). This report, which shall include data and methodology used to collect the data, must be received by the Commission prior to 1 November of the year in which such [Pacific halibut](#) were harvested.

98. Fishing Periods

- (1) The fishing periods for each regulatory area apply where the catch limits specified in section ~~11~~12 have not been taken.

- (2) Each fishing period in the [IPHC Regulatory Area 2A](#) directed commercial fishery² shall begin at 0800 hours and terminate at 1800 hours local time on ~~28-27~~ June, ~~12-11~~ July, ~~26-25~~ July, ~~9~~ ~~8~~ August, ~~23-22~~ August, ~~6-5~~ September, and ~~20-19~~ September, unless the Commission specifies otherwise.
- (3) Notwithstanding paragraph (7) of section ~~11-12~~, an incidental catch fishery³ is authorized during the sablefish seasons in Area 2A in accordance with regulations promulgated by NMFS. This fishery will occur between 1200 hours local time on ~~11-24~~ March and 1200 hours local time on 7 November.
- (4) Notwithstanding paragraph (2), and paragraph (7) of section ~~11-12~~, an incidental catch fishery is authorized during salmon troll seasons in Area 2A in accordance with regulations promulgated by NMFS. This fishery will occur between 1200 hours local time on ~~11-24~~ March and 1200 hours local time on 7 November.
- (5) The fishing period in [IPHC Regulatory Areas 2B, 2C, 3A, 3B, 4A, 4B, 4C, 4D, and 4E](#) shall begin at 1200 hours local time on ~~11-24~~ March and terminate at 1200 hours local time on 7 November, unless the Commission specifies otherwise.
- (6) All commercial fishing for [Pacific halibut](#) in [IPHC Regulatory Areas 2A, 2B, 2C, 3A, 3B, 4A, 4B, 4C, 4D, and 4E](#) shall cease at 1200 hours local time on 7 November.

²The directed fishery is restricted to waters that are south of Point Chehalis, Washington, (46°53.30' N. latitude) under regulations promulgated by NMFS and published in the [Federal Register](#).

³The incidental fishery during the directed, fixed gear sablefish season is restricted to waters that are north of Point Chehalis, Washington, (46°53.30' N. latitude) under regulations promulgated by NMFS at 50 CFR 300.63. Landing restrictions for [Pacific halibut](#) retention in the fixed gear sablefish fishery can be found at 50 CFR 660.231.

109. Closed Periods

- (1) No person shall engage in fishing for [Pacific halibut](#) in any ~~IPHC R~~egulatory ~~A~~area other than during the fishing periods set out in section ~~8-9~~ in respect of that area.
- (2) No person shall land or otherwise retain [Pacific halibut](#) caught outside a fishing period applicable to the regulatory area where the [Pacific halibut](#) was taken.
- (3) Subject to paragraphs (7), (8), (9), and (10) of section ~~19-20~~, these Regulations do not prohibit fishing for any species of fish other than [Pacific halibut](#) during the closed periods.
- (4) Notwithstanding paragraph (3), no person shall have [Pacific halibut](#) in his/her possession while fishing for any other species of fish during the closed periods.
- (5) No vessel shall retrieve any [Pacific halibut](#) fishing gear during a closed period if the vessel has any [Pacific halibut](#) on board.
- (6) A vessel that has no [Pacific halibut](#) on board may retrieve any [Pacific halibut](#) fishing gear during the closed period after the operator notifies an authorized officer or representative of the Commission prior to that retrieval.
- (7) After retrieval of [Pacific halibut](#) gear in accordance with paragraph (6), the vessel shall submit to a hold inspection at the discretion of the authorized officer or representative of the Commission.
- (8) No person shall retain any [Pacific halibut](#) caught on gear retrieved in accordance with paragraph (6).

- (9) No person shall possess [Pacific](#) halibut on board a vessel in a regulatory area during a closed period unless that vessel is in continuous transit to or within a port in which that [Pacific](#) halibut may be lawfully sold.

1110. Closed Area

All waters in the Bering Sea north of 55°00'00'' N. latitude in Isanotski Strait that are enclosed by a line from Cape Sarichef Light (54°36'00'' N. latitude, 164°55'42'' W. longitude) to a point at 56°20'00'' N. latitude, 168°30'00'' W. longitude; thence to a point at 58°21'25'' N. latitude, 163°00'00'' W. longitude; thence to Strogonof Point (56°53'18'' N. latitude, 158°50'37'' W. longitude); and then along the northern coasts of the Alaska Peninsula and Unimak Island to the point of origin at Cape Sarichef Light are closed to [Pacific](#) halibut fishing and no person shall fish for [Pacific](#) halibut therein or have [Pacific](#) halibut in his/her possession while in those waters except in the course of a continuous transit across those waters. All waters in Isanotski Strait between 55°00'00'' N. latitude and 54°49'00'' N. latitude are closed to [Pacific](#) halibut fishing.

1112. Commercial Catch Limits

- (1) The total allowable commercial catch of [Pacific](#) halibut to be taken during the commercial [Pacific](#) halibut fishing periods specified in section [8-9](#), shall be limited to the net weights expressed in pounds or metric tons shown in the following table:

IPHC Regulatory Area	Commercial Catch Limit - net weight	
	Pounds	Metric tons
2A: directed commercial, and incidental commercial catch during salmon troll fishery	265,402	120.38
2A: incidental commercial during sablefish fishery	70,000	31.75
2B ⁴	6,271,971	2,844.92
2C ⁵	4,212,000	1,910.53
3A ⁶	7,739,000	3,510.36
3B	3,140,000	1,424.28
4A	1,390,000	630.49
4B	1,140,000	517.09
4C	752,000	341.10

4D	752,000	341.10
4E	196,000	88.90

- (2) Notwithstanding paragraph (1), regulations pertaining to the division of the [IPHC Regulatory Area 2A](#) catch limit between the directed commercial fishery and the incidental catch fishery as described in paragraph (4) of section [8-9](#) will be promulgated by NMFS and published in the [Federal Register](#).
- (3) The Commission shall determine and announce to the public the date on which the catch limit for [IPHC Regulatory Area 2A](#) will be taken.
- (4) Notwithstanding paragraph (1), the commercial fishing in [IPHC Regulatory Area 2B](#) will close only when all Individual Vessel Quotas (IVQs) assigned by DFO are taken, or 7 November, whichever is earlier.
- (5) Notwithstanding paragraph (1), [IPHC Regulatory Areas 2C, 3A, 3B, 4A, 4B, 4C, 4D, and 4E](#) will each close only when all Individual Fishing Quotas (IFQ) and all CDQs issued by NMFS have been taken, or 7 November, whichever is earlier.
- (6) If the Commission determines that the catch limit specified for [IPHC Regulatory Area 2A](#) in paragraph (1) would be exceeded in an unrestricted 10-hour fishing period as specified in paragraph (2) of section [8-9](#), the catch limit for that area shall be considered to have been taken and the directed commercial fishery closed as announced by the Commission.
- (7) When under paragraphs (2), (3), and (6) the Commission has announced a date on which the catch limit for [IPHC Regulatory Area 2A](#) will be taken, no person shall fish for [Pacific halibut](#) in that area after that date for the rest of the year, unless the Commission has announced the reopening of that area for [Pacific halibut](#) fishing.
- (8) Notwithstanding paragraph (1), the total allowable catch of [Pacific halibut](#) that may be taken in the [IPHC Regulatory Area 4E](#) directed commercial fishery is equal to the combined annual catch limits specified for the [IPHC Regulatory Areas 4D and Area 4E](#) CDQ fisheries [and any IPHC Regulatory Area 4D IFQ received by transfer by a CDO organization](#). The annual [IPHC Regulatory Area 4D CDQ](#) catch limit will decrease by the equivalent amount of [halibut CDQ and IFQ received by transfer by a CDO organization](#) taken in [IPHC Regulatory Area 4E](#) in excess of the annual [IPHC Regulatory Area 4E CDQ](#) catch limit.
- (9) Notwithstanding paragraph (1), the total allowable catch of [Pacific halibut](#) that may be taken in the [IPHC Regulatory Area 4D](#) directed commercial fishery is equal to the combined annual catch limits specified for [IPHC Regulatory Areas 4C and Area 4D](#). The annual [IPHC Regulatory Area 4C](#) catch limit will decrease by the equivalent amount of [Pacific halibut](#) taken in [IPHC Regulatory Area 4D](#) in excess of the annual [IPHC Regulatory Area 4D](#) catch limit.

⁴ IPHC allocates the catch limit to [IPHC Regulatory Area 2B](#) as a combined commercial and sport catch limit (7,450,000 pounds). DFO allocates that amount between commercial and sport according to their allocation policy. In addition to the commercial fishery amount, 60,000 pounds has been allocated for research purposes. This amount also excludes any overage/underage adjustments. See section [27-28](#) for sport fishing regulations.

⁵ For [IPHC Regulatory Area 2C](#), the commercial catch limit adopted by the Commission includes catch (4,212,000 pounds) reported in the table plus estimated incidental mortality from the commercial fishery (123,000 pounds) for a total of 4,335,000 pounds. This total amount is included in the combined commercial and guided sport sector catch limit set by IPHC and allocated by NMFS by a catch sharing plan (5,250,000 pounds).

⁶For [IPHC Regulatory Area 3A](#), the commercial catch limit adopted by the Commission includes catch (7,739,000 pounds) reported in the table plus estimated incidental mortality from the commercial fishery (371,000 pounds) for a total of 8,110,000 pounds. This total amount is included in the combined commercial and guided sport sector catch limit set by IPHC and allocated by NMFS by a catch sharing plan (10,000,000 pounds).

1213. Fishing Period Limits

- (1) It shall be unlawful for any vessel to retain more [Pacific](#) halibut than authorized by that vessel's license in any fishing period for which the Commission has announced a fishing period limit.
- (2) The operator of any vessel that fishes for [Pacific](#) halibut during a fishing period when fishing period limits are in effect must, upon commencing an offload of [Pacific](#) halibut to a commercial fish processor, completely offload all [Pacific](#) halibut on board said vessel to that processor and ensure that all [Pacific](#) halibut is weighed and reported on State fish tickets.
- (3) The operator of any vessel that fishes for [Pacific](#) halibut during a fishing period when fishing period limits are in effect must, upon commencing an offload of [Pacific](#) halibut other than to a commercial fish processor, completely offload all [Pacific](#) halibut on board said vessel and ensure that all [Pacific](#) halibut are weighed and reported on State fish tickets.
- (4) The provisions of paragraph (3) are not intended to prevent retail over-the-side sales to individual purchasers so long as all the [Pacific](#) halibut on board is ultimately offloaded and reported.
- (5) When fishing period limits are in effect, a vessel's maximum retainable catch will be determined by the Commission based on:
 - (a) the vessel's overall length in feet and associated length class;
 - (b) the average performance of all vessels within that class; and
 - (c) the remaining catch limit.
- (6) Length classes are shown in the following table:

<u>Overall Length (in feet)</u>	<u>Vessel Class</u>
1-25	A
26-30	B
31-35	C
36-40	D
41-45	E
46-50	F
51-55	G
56+	H
- (7) Fishing period limits in [IPHC Regulatory Area 2A](#) apply only to the directed [Pacific](#) halibut fishery referred to in paragraph (2) of section [89](#).

1314. Size Limits

- (1) No person shall take or possess any [Pacific](#) halibut that:

- (a) with the head on, is less than 32 inches (81.3 cm) as measured in a straight line, passing over the pectoral fin from the tip of the lower jaw with the mouth closed, to the extreme end of the middle of the tail, as illustrated in Figure 2; or
 - (b) with the head removed, is less than 24 inches (61.0 cm) as measured from the base of the pectoral fin at its most anterior point to the extreme end of the middle of the tail, as illustrated in Figure 2.
- (2) No person on board a vessel fishing for, or tendering, [Pacific halibut in any IPHC Regulatory Area](#) shall possess any [Pacific halibut](#) that has had its head removed, except that [Pacific halibut](#) frozen at sea with its head removed may be possessed on board a vessel by persons in [IPHC Regulatory Areas 2B, 2C, 3A, 3B, 4A, 4B, 4C, 4D, and 4E](#) if authorized by Federal regulations.
 - (3) The size limit in paragraph (1)(b) will not be applied to any [Pacific halibut](#) that has had its head removed after the operator has landed the [Pacific halibut](#).

1415. Careful Release of [Pacific Halibut](#)

- (1) All [Pacific halibut](#) that are caught and are not retained shall be immediately released outboard of the roller and returned to the sea with a minimum of injury by:
 - (a) hook straightening;
 - (b) cutting the gangion near the hook; or
 - (c) carefully removing the hook by twisting it from the [Pacific halibut](#) with a gaff.
- (2) Except that paragraph (1) shall not prohibit the possession of [Pacific halibut](#) on board a vessel that has been brought aboard to be measured to determine if the minimum size limit of the [Pacific halibut](#) is met and, if sublegal-sized, is promptly returned to the sea with a minimum of injury.

1516. Vessel Clearance in [IPHC Regulatory Area 4](#)

- (1) The operator of any vessel that fishes for [Pacific halibut](#) in [IPHC Regulatory Areas 4A, 4B, 4C, or 4D](#) must obtain a vessel clearance before fishing in any of these areas, and before the landing of any [Pacific halibut](#) caught in any of these areas, unless specifically exempted in paragraphs (10), (13), (14), (15), or (16).
- (2) An operator obtaining a vessel clearance required by paragraph (1) must obtain the clearance in person from the authorized clearance personnel and sign the IPHC form documenting that a clearance was obtained, except that when the clearance is obtained via VHF radio referred to in paragraphs (5), (8), and (9), the authorized clearance personnel must sign the IPHC form documenting that the clearance was obtained.
- (3) The vessel clearance required under paragraph (1) prior to fishing in [IPHC Regulatory Area 4A](#) may be obtained only at Nazan Bay on Atka Island, Dutch Harbor or Akutan, Alaska, from an authorized officer of the United States, a representative of the Commission, or a designated fish processor.
- (4) The vessel clearance required under paragraph (1) prior to fishing in [IPHC Regulatory Area 4B](#) may only be obtained at Nazan Bay on Atka Island or Adak, Alaska, from an authorized officer of the United States, a representative of the Commission, or a designated fish processor.

- (5) The vessel clearance required under paragraph (1) prior to fishing in [IPHC Regulatory Area 4C](#) or [4D](#) may be obtained only at St. Paul or St. George, Alaska, from an authorized officer of the United States, a representative of the Commission, or a designated fish processor by VHF radio and allowing the person contacted to confirm visually the identity of the vessel.
- (6) The vessel operator shall specify the specific regulatory area in which fishing will take place.
- (7) Before unloading any [Pacific](#) halibut caught in [IPHC Regulatory Area 4A](#), a vessel operator may obtain the clearance required under paragraph (1) only in Dutch Harbor or Akutan, Alaska, by contacting an authorized officer of the United States, a representative of the Commission, or a designated fish processor.
- (8) Before unloading any [Pacific](#) halibut caught in [IPHC Regulatory Area 4B](#), a vessel operator may obtain the clearance required under paragraph (1) only in Nazan Bay on Atka Island or Adak, by contacting an authorized officer of the United States, a representative of the Commission, or a designated fish processor by VHF radio or in person.
- (9) Before unloading any [Pacific](#) halibut caught in [IPHC Regulatory Areas 4C](#) and [4D](#), a vessel operator may obtain the clearance required under paragraph (1) only in St. Paul, St. George, Dutch Harbor, or Akutan, Alaska, either in person or by contacting an authorized officer of the United States, a representative of the Commission, or a designated fish processor. The clearances obtained in St. Paul or St. George, Alaska, can be obtained by VHF radio and allowing the person contacted to confirm visually the identity of the vessel.
- (10) Any vessel operator who complies with the requirements in section ~~48~~ [19](#) for possessing [Pacific](#) halibut on board a vessel that was caught in more than one regulatory area in [IPHC Regulatory Area 4](#) is exempt from the clearance requirements of paragraph (1) of this section, provided that:
 - (a) the operator of the vessel obtains a vessel clearance prior to fishing in [IPHC Regulatory Area 4](#) in either Dutch Harbor, Akutan, St. Paul, St. George, Adak, or Nazan Bay on Atka Island by contacting an authorized officer of the United States, a representative of the Commission, or a designated fish processor. The clearance obtained in St. Paul, St. George, Adak, or Nazan Bay on Atka Island can be obtained by VHF radio and allowing the person contacted to confirm visually the identity of the vessel. This clearance will list the areas in which the vessel will fish; and
 - (b) before unloading any [Pacific](#) halibut from [IPHC Regulatory Area 4](#), the vessel operator obtains a vessel clearance from Dutch Harbor, Akutan, St. Paul, St. George, Adak, or Nazan Bay on Atka Island by contacting an authorized officer of the United States, a representative of the Commission, or a designated fish processor. The clearance obtained in St. Paul or St. George can be obtained by VHF radio and allowing the person contacted to confirm visually the identity of the vessel. The clearance obtained in Adak or Nazan Bay on Atka Island can be obtained by VHF radio.
- (11) Vessel clearances shall be obtained between 0600 and 1800 hours, local time.
- (12) No [Pacific](#) halibut shall be on board the vessel at the time of the clearances required prior to fishing in [IPHC Regulatory Area 4](#).
- (13) Any vessel that is used to fish for [Pacific](#) halibut only in [IPHC Regulatory Area 4A](#) and lands its total annual [Pacific](#) halibut catch at a port within [IPHC Regulatory Area 4A](#) is exempt from the clearance requirements of paragraph (1).

- (14) Any vessel that is used to fish for [Pacific](#) halibut only in [IPHC Regulatory Area 4B](#) and lands its total annual [Pacific](#) halibut catch at a port within [IPHC Regulatory Area 4B](#) is exempt from the clearance requirements of paragraph (1).
- (15) Any vessel that is used to fish for [Pacific](#) halibut only in [IPHC Regulatory Areas 4C](#) or [4D](#) or [4E](#) and lands its total annual [Pacific](#) halibut catch at a port within [IPHC Regulatory Areas 4C, 4D, 4E](#), or the closed area defined in section [4011](#), is exempt from the clearance requirements of paragraph (1).
- (16) Any vessel that carries a transmitting VMS transmitter while fishing for [Pacific](#) halibut in [IPHC Regulatory Areas 4A, 4B, 4C, or 4D](#) and until all [Pacific](#) halibut caught in any of these areas is landed, is exempt from the clearance requirements of paragraph (1) of this section, provided that:
 - (a) the operator of the vessel complies with NMFS' vessel monitoring system regulations published at 50 CFR 679.28(f)(3), (4) and (5); and
 - (b) the operator of the vessel notifies NOAA Fisheries Office for Law Enforcement at 800-304-4846 (select option 1 to speak to an Enforcement Data Clerk) between the hours of 0600 and 0000 (midnight) local time within 72 hours before fishing for [Pacific](#) halibut in [IPHC Regulatory Areas 4A, 4B, 4C, or 4D](#) and receives a VMS confirmation number.

1617. Logs

- (1) The operator of any U.S. vessel fishing for [Pacific](#) halibut that has an overall length of 26 feet (7.9 meters) or greater shall maintain an accurate log of [Pacific](#) halibut fishing operations. The operator of a vessel fishing in waters in and off Alaska must use one of the following logbooks: the Groundfish/IFQ Longline and Pot Gear Daily Fishing Logbook, in electronic or paper form, provided by NMFS; the Alaska hook-and-line logbook provided by Petersburg Vessel Owners Association or Alaska Longline Fisherman's Association; the Alaska Department of Fish and Game (ADF&G) longline-pot logbook; or the logbook provided by IPHC. The operator of a vessel fishing in [IPHC Regulatory Area 2A](#) must use either the WDFW Voluntary Sablefish Logbook, Oregon Department of Fish and Wildlife (ODFW) Fixed Gear Logbook, or the logbook provided by IPHC.
- (2) The logbook referred to in paragraph (1) must include the following information:
 - (a) the name of the vessel and the State (ADF&G, WDFW, ODFW, or CDFW) or Tribal ID number;
 - (b) the date(s) upon which the fishing gear is set or retrieved;
 - (c) the latitude and longitude coordinates or a direction and distance from a point of land for each set or day;
 - (d) the number of skates deployed or retrieved, and number of skates lost; and
 - (e) the total weight or number of [Pacific](#) halibut retained for each set or day.
- (3) The logbook referred to in paragraph (1) shall be:
 - (a) maintained on board the vessel;
 - (b) updated not later than 24 hours after 0000 (midnight) local time for each day fished and prior to the offloading or sale of [Pacific](#) halibut taken during that fishing trip;
 - (c) retained for a period of two years by the owner or operator of the vessel;

- (d) open to inspection by an authorized officer or any authorized representative of the Commission upon demand; and
 - (e) kept on board the vessel when engaged in [Pacific](#) halibut fishing, during transits to port of landing, and until the offloading of all [Pacific](#) halibut is completed.
- (4) The log referred to in paragraph (1) does not apply to the incidental [Pacific](#) halibut fishery during the salmon troll season in [IPHC Regulatory Area 2A](#) defined in paragraph (4) of section [89](#).
- (5) The operator of any Canadian vessel fishing for [Pacific](#) halibut shall maintain an accurate record in the British Columbia Integrated Groundfish Fishing Log.
- (6) The log referred to in paragraph (5) must include the following information:
- (a) the name of the vessel and the DFO vessel registration number;
 - (b) the date(s) upon which the fishing gear is set and retrieved;
 - (c) the latitude and longitude coordinates for each set;
 - (d) the number of skates deployed or retrieved, and number of skates lost; and
 - (e) the total weight or number of [Pacific](#) halibut retained for each set.
- (7) The log referred to in paragraph (5) shall be:
- (a) maintained on board the vessel;
 - (b) retained for a period of two years by the owner or operator of the vessel;
 - (c) open to inspection by an authorized officer or any authorized representative of the Commission upon demand;
 - (d) kept on board the vessel when engaged in [Pacific](#) halibut fishing, during transits to port of landing, and until the offloading of all [Pacific](#) halibut is completed;
 - (e) submitted to the DFO within seven days of offloading; and
 - (f) submitted to the Commission within seven days of the final offload if not previously collected by a Commission employee.
- (8) No person shall make a false entry in a log referred to in this section.

1718. Receipt and Possession of [Pacific](#) Halibut

- (1) No person shall receive [Pacific](#) halibut caught in [IPHC Regulatory Area 2A](#) from a United States vessel that does not have on board the license required by section [45](#).
- (2) No person shall possess on board a vessel a [Pacific](#) halibut other than whole or with gills and entrails removed, except that this paragraph shall not prohibit the possession on board a vessel of:
 - (a) [Pacific](#) halibut cheeks cut from [Pacific](#) halibut caught by persons authorized to process the [Pacific](#) halibut on board in accordance with NMFS regulations published at 50 CFR Part 679;
 - (b) fillets from [Pacific](#) halibut offloaded in accordance with section [17-18](#) that are possessed on board the harvesting vessel in the port of landing up to 1800 hours local time on the calendar day following the offload⁷; and

- (c) [Pacific](#) halibut with their heads removed in accordance with section ~~4314~~.
- (3) No person shall offload [Pacific](#) halibut from a vessel unless the gills and entrails have been removed prior to offloading⁸.
- (4) It shall be the responsibility of a vessel operator who lands [Pacific](#) halibut to continuously and completely offload at a single offload site all [Pacific](#) halibut on board the vessel.
- (5) A registered buyer (as that term is defined in regulations promulgated by NMFS and codified at 50 CFR Part 679) who receives [Pacific](#) halibut harvested in IFQ and CDQ fisheries in [IPHC Regulatory Areas 2C, 3A, 3B, 4A, 4B, 4C, 4D, and 4E](#), directly from the vessel operator that harvested such [Pacific](#) halibut must weigh all the [Pacific](#) halibut received and record the following information on Federal catch reports: date of offload; name of vessel; vessel number (State, Tribal or Federal, not IPHC vessel number); scale weight obtained at the time of offloading, including the scale weight (in pounds) of [Pacific](#) halibut purchased by the registered buyer, the scale weight (in pounds) of [Pacific](#) halibut offloaded in excess of the IFQ or CDQ, the scale weight of [Pacific](#) halibut (in pounds) retained for personal use or for future sale, and the scale weight (in pounds) of [Pacific](#) halibut discarded as unfit for human consumption. All [Pacific](#) halibut harvested in IFQ or CDQ fisheries in [Areas IPHC Regulatory 2C, 3A, 3B, 4A, 4B, 4C, 4D, and 4E](#), must be weighed with the head on and the head-on weight must be recorded on Federal catch reports as specified in this paragraph, unless the [Pacific](#) halibut is frozen at sea and exempt from the head-on landing requirement at Section ~~4314(2)~~.
- (6) The first recipient, commercial fish processor, or buyer in the United States who purchases or receives [Pacific](#) halibut directly from the vessel operator that harvested such [Pacific](#) halibut must weigh and record all [Pacific](#) halibut received and record the following information on State fish tickets: the date of offload; vessel number (State or Federal, not IPHC vessel number) or Tribal ID number; total weight obtained at the time of offload including the weight (in pounds) of [Pacific](#) halibut purchased; the weight (in pounds) of [Pacific](#) halibut offloaded in excess of the IFQ, CDQ, or fishing period limits; the weight of [Pacific](#) halibut (in pounds) retained for personal use or for future sale; and the weight (in pounds) of halibut discarded as unfit for human consumption. All [Pacific](#) halibut harvested in IFQ or CDQ fisheries in [IPHC Regulatory Areas 2C, 3A, 3B, 4A, 4B, 4C, 4D, and 4E](#), must be weighed with the head on and the head-on weight must be recorded on State fish tickets as specified in this paragraph, unless the [Pacific](#) halibut is frozen at sea and exempt from the head-on landing requirement at Section ~~4314(2)~~.
- ~~(7) The individual completing the State fish tickets for the Area 2A fisheries as referred to in paragraph (6) must additionally record whether the halibut weight is of head-on or head-off fish.~~
- ~~(78)~~ For [Pacific](#) halibut landings made in Alaska, the requirements as listed in paragraphs (5) and (6) can be met by recording the information in the Interagency Electronic Reporting Systems, eLandings in accordance with NMFS regulation published at 50 CFR Part 679.
- ~~(89)~~ The master or operator of a Canadian vessel that was engaged in [Pacific](#) halibut fishing must weigh and record all [Pacific](#) halibut on board said vessel at the time offloading commences and record on Provincial fish tickets or Federal catch reports: the date; locality; name of vessel; the name(s) of the person(s) from whom the [Pacific](#) halibut was purchased; and the scale weight obtained at the time of offloading of all [Pacific](#) halibut on board the vessel including the pounds purchased, pounds in excess of IVQs, pounds retained for personal use, and pounds discarded as unfit for human consumption. All [Pacific](#) halibut must be weighed with the head on and the head-on weight must be recorded on the Provincial fish tickets or Federal catch reports as

specified in this paragraph, unless the Pacific halibut is frozen at sea and exempt from the head-on landing requirement at Section 4314(2).

- (940) No person shall make a false entry on a State or Provincial fish ticket or a Federal catch or landing report referred to in paragraphs (5), (6), and (98) of section 4718.
- (1044) A copy of the fish tickets or catch reports referred to in paragraphs (5), (6), and (89) shall be:
- retained by the person making them for a period of three years from the date the fish tickets or catch reports are made; and
 - open to inspection by an authorized officer or any authorized representative of the Commission.
- (1142) No person shall possess any Pacific halibut taken or retained in contravention of these Regulations.
- (1243) When Pacific halibut are landed to other than a commercial fish processor, the records required by paragraph (6) shall be maintained by the operator of the vessel from which that Pacific halibut was caught, in compliance with paragraph (1044).
- (1344) No person shall tag Pacific halibut unless the tagging is authorized by IPHC permit or by a Federal or State agency.

⁷ DFO has more restrictive regulations; therefore, section 47-18 paragraph (2)(b) does not apply to fish caught in IPHC Regulatory Area 2B or landed in British Columbia.

⁸ DFO did not adopt this regulation; therefore, section 47-18 paragraph (3) does not apply to fish caught in IPHC Regulatory Area 2B.

1819. Fishing Multiple Regulatory Areas

- Except as provided in this section, no person shall possess at the same time on board a vessel Pacific halibut caught in more than one IPHC Regulatory Area.
- Pacific halibut caught in more than one of the IPHC Regulatory Areas 2C, 3A, 3B, 4A, 4B, 4C, 4D, or 4E may be possessed on board a vessel at the same time only if:
 - authorized by NMFS regulations published at 50 CFR Section 679.7(f)(4); and
 - the operator of the vessel identifies the regulatory area in which each Pacific halibut on board was caught by separating Pacific halibut from different areas in the hold, tagging Pacific halibut, or by other means.

1920. Fishing Gear

- No person shall fish for Pacific halibut using any gear other than hook and line gear,
 - except that vessels licensed to catch sablefish in IPHC Regulatory Area 2B using sablefish trap gear as defined in the Condition of Licence can retain Pacific halibut caught as bycatch under regulations promulgated by DFO; or
 - except that a person may retain Pacific halibut taken with longline or single pot gear in the sablefish IFQ fishery if such retention is authorized by NMFS regulations published at 50 CFR Part 679.
- No person shall possess Pacific halibut taken with any gear other than hook and line gear,

Commented [SK2]:

Please note that Footnote 8 is not included in the draft provided to the two Governments.

In the past, Canada has not adopted this regulation and we have included this footnote after their reply in the printed version of the approved regulations.

- (a) except that vessels licensed to catch sablefish in [IPHC Regulatory Area 2B](#) using sablefish trap gear as defined by the Condition of Licence can retain [Pacific](#) halibut caught as bycatch under regulations promulgated by DFO; or
 - (b) except that a person may possess [Pacific](#) halibut taken with longline ~~or single~~ pot gear ~~in the sablefish IFQ fishery~~ if such possession is authorized by NMFS regulations published at 50 CFR Part 679.
- (3) No person shall possess [Pacific](#) halibut while on board a vessel carrying any trawl nets or fishing pots capable of catching [Pacific](#) halibut,
- (a) except that in [IPHC Regulatory Areas 2C, 3A, 3B, 4A, 4B, 4C, 4D, or 4E](#), [Pacific](#) halibut heads, skin, entrails, bones or fins for use as bait may be possessed on board a vessel carrying pots capable of catching [Pacific](#) halibut, provided that a receipt documenting purchase or transfer of these [Pacific](#) halibut parts is on board the vessel; or
 - (b) except that in [IPHC Regulatory Areas 2C, 3A, 3B, 4A, 4B, 4C, 4D, or 4E](#), [Pacific](#) halibut may be possessed on board a vessel carrying pots capable of catching [Pacific](#) halibut, provided such possession is authorized by NMFS regulations published at 50 CFR Part 679 as referenced in paragraphs (1) and (2) of this section; or
 - (c) except that in [IPHC Regulatory Area 2B](#), [Pacific](#) halibut may be possessed on board a vessel carrying sablefish trap gear, provided such possession is authorized by the Condition of Licence regulations promulgated by DFO as referenced in paragraphs (1) and (2) of this section.
- (4) All ~~setline or skate gear~~ marker buoys carried on board or used by any United States vessel used for [Pacific](#) halibut fishing shall be marked with one of the following:
- (a) the vessel's State license number; or
 - (b) the vessel's registration number.
- (5) The markings specified in paragraph (4) shall be in characters at least four inches in height and one-half inch in width in a contrasting color visible above the water and shall be maintained in legible condition.
- (6) All ~~setline or skate gear~~ marker buoys carried on board or used by a Canadian vessel used for [Pacific](#) halibut fishing shall be:
- (a) floating and visible on the surface of the water; and
 - (b) legibly marked with the identification plate number of the vessel engaged in commercial fishing from which that setline is being operated.
- (7) No person on board a vessel used to fish for any species of fish anywhere in [IPHC Regulatory Area 2A](#) during the 72-hour period immediately before the fishing period for the directed commercial fishery shall catch or possess [Pacific](#) halibut anywhere in those waters during that [Pacific](#) halibut fishing period unless, prior to the start of the [Pacific](#) halibut fishing period, the vessel has removed its gear from the water and has either:
- (a) made a landing and completely offloaded its catch of other fish; or
 - (b) submitted to a hold inspection by an authorized officer.
- (8) No vessel used to fish for any species of fish anywhere in [IPHC Regulatory Area 2A](#) during the 72-hour period immediately before the fishing period for the directed commercial fishery may be used to catch or possess [Pacific](#) halibut anywhere in those waters during that [Pacific](#) halibut fishing period unless, prior to the start of the [Pacific](#) halibut fishing period, the vessel has removed its gear from the water and has either:

- (a) made a landing and completely offloaded its catch of other fish; or
 - (b) submitted to a hold inspection by an authorized officer.
- (9) No person on board a vessel from which setline gear was used to fish for any species of fish anywhere in [IPHC Regulatory Areas 2B, 2C, 3A, 3B, 4A, 4B, 4C, 4D, or 4E](#) during the 72-hour period immediately before the opening of the [Pacific](#) halibut fishing season shall catch or possess [Pacific](#) halibut anywhere in those areas until the vessel has removed all of its setline gear from the water and has either:
- (a) made a landing and completely offloaded its entire catch of other fish; or
 - (b) submitted to a hold inspection by an authorized officer.
- (10) No vessel from which setline gear was used to fish for any species of fish anywhere in [IPHC Regulatory Areas 2B, 2C, 3A, 3B, 4A, 4B, 4C, 4D, or 4E](#) during the 72-hour period immediately before the opening of the [Pacific](#) halibut fishing season may be used to catch or possess [Pacific](#) halibut anywhere in those areas until the vessel has removed all of its setline gear from the water and has either:
- (a) made a landing and completely offloaded its entire catch of other fish; or
 - (b) submitted to a hold inspection by an authorized officer.
- (11) Notwithstanding any other provision in these Regulations, a person may retain, possess and dispose of [Pacific](#) halibut taken with trawl gear only as authorized by Prohibited Species Donation regulations of NMFS.

2021. Supervision of Unloading and Weighing

The unloading and weighing of [Pacific](#) halibut may be subject to the supervision of authorized officers to assure the fulfillment of the provisions of these Regulations.

2122. Retention of Tagged [Pacific](#) Halibut

- (1) Nothing contained in these Regulations prohibits any vessel at any time from retaining and landing a [Pacific](#) halibut that bears a Commission external tag at the time of capture, if the [Pacific](#) halibut with the tag still attached is reported at the time of landing and made available for examination by a representative of the Commission or by an authorized officer.
- (2) After examination and removal of the tag by a representative of the Commission or an authorized officer, the [Pacific](#) halibut:
 - (a) may be retained for personal use; or
 - (b) may be sold only if the [Pacific](#) halibut is caught during commercial [Pacific](#) halibut fishing and complies with the other commercial fishing provisions of these Regulations.
- (3) Any [Pacific](#) halibut that bears a Commission external tag must count against commercial IVQs, CDQs, or IFQs unless otherwise exempted by State, Provincial, or Federal regulations.
- (4) Any [Pacific](#) halibut that bears a Commission external tag will not count against sport daily bag limits or possession limits, may be retained outside of sport fishing seasons, and are not subject to size limits in these regulations.
- (5) Any [Pacific](#) halibut that bears a Commission external tag will not count against daily bag limits, possession limits, or catch limits in the fisheries described in section [2223](#), paragraph (7), section [2324](#), or section [2425](#).

2223. Fishing by United States Treaty Indian Tribes

- (1) [Pacific Halibut](#) fishing in Subarea 2A-1 by members of United States treaty Indian tribes located in the State of Washington shall be regulated under regulations promulgated by NMFS and published in the [Federal Register](#).
- (2) Subarea 2A-1 includes all waters off the coast of Washington that are north of the Quinault River, WA (47°21.00' N. lat.), and east of 125°44.00' W. long; all waters off the coast of Washington that are between the Quinault River, WA (47°21.00' N. lat.), and Point Chehalis, WA (46°53.30' N. lat.), and east of 125°08.50' W. long.; and all inland marine waters of Washington.
- (3) Section ~~13-14~~ (size limits), section ~~44-15~~ (careful release of [Pacific halibut](#)), section ~~46-17~~ (logs), section ~~47-18~~ (receipt and possession of [Pacific halibut](#)) and section ~~49-20~~ (fishing gear), except paragraphs (7) and (8) of section ~~49-20~~, apply to commercial fishing for [Pacific halibut](#) in Subarea 2A-1 by the treaty Indian tribes.
- (4) Regulations in paragraph (3) of this section that apply to State fish tickets apply to Tribal tickets that are authorized by WDFW.
- (5) Section 4 (Licensing Vessels for [IPHC Regulatory Area 2A](#)) does not apply to commercial fishing for [Pacific halibut](#) in Subarea 2A-1 by treaty Indian tribes.
- (6) Commercial fishing for [Pacific halibut](#) in Subarea 2A-1 is permitted with hook and line gear from ~~11-24~~ March through 7 November, or until 435,900 pounds (197.72 metric tons) net weight is taken, whichever occurs first.
- (7) Ceremonial and subsistence fishing for [Pacific halibut](#) in Subarea 2A-1 is permitted with hook and line gear from January 1 through December 31, and is estimated to take 29,600 pounds (13.43 metric tons) net weight.

2324. Customary and Traditional Fishing in Alaska

- (1) Customary and traditional fishing for [Pacific halibut](#) in [IPHC Regulatory Areas 2C, 3A, 3B, 4A, 4B, 4C, 4D, and 4E](#) shall be governed pursuant to regulations promulgated by NMFS and published in 50 CFR Part 300.
- (2) Customary and traditional fishing is authorized from 1 January through 31 December.

2425. Aboriginal Groups Fishing for Food, Social and Ceremonial Purposes in British Columbia

- (1) Fishing for [Pacific halibut](#) for food, social and ceremonial purposes by Aboriginal groups in [IPHC Regulatory Area 2B](#) shall be governed by the *Fisheries Act* of Canada and regulations as amended from time to time.

2526. Sport Fishing for [Pacific Halibut](#)—General

- (1) No person shall engage in sport fishing for [Pacific halibut](#) using gear other than a single line with no more than two hooks attached; or a spear.
- (2) Any size limit promulgated under IPHC or NMFS regulations shall be measured in a straight line passing over the pectoral fin from the tip of the lower jaw with the mouth closed, to the extreme end of the middle of the tail.

- (3) Any [Pacific](#) halibut brought aboard a vessel and not immediately returned to the sea with a minimum of injury will be included in the daily bag limit of the person catching the [Pacific](#) halibut.
- (4) No person may possess [Pacific](#) halibut on a vessel while fishing in a closed area.
- (5) No [Pacific](#) halibut caught by sport fishing shall be offered for sale, sold, traded, or bartered.
- (6) No [Pacific](#) halibut caught in sport fishing shall be possessed on board a vessel when other fish or shellfish aboard said vessel are destined for commercial use, sale, trade, or barter.
- (7) The operator of a charter vessel shall be liable for any violations of these Regulations committed by an angler on board said vessel. In Alaska, the charter vessel guide, as defined in 50 CFR 300.61 and referred to in 50 CFR 300.65, 300.66, and 300.67, shall be liable for any violation of these Regulations committed by an angler on board a charter vessel.

2627. Sport Fishing for [Pacific](#) Halibut—[IPHC Regulatory Area 2A](#)

- (1) The total allowable catch of [Pacific](#) halibut shall be limited to:
 - (a) 237,762 pounds (107.85 metric tons) net weight in waters off Washington;
 - (b) 256,757 pounds (116.46 metric tons) net weight in waters off Oregon; and
 - (c) 34,580 pounds (15.69 metric tons) net weight in waters off California.
- (2) The Commission shall determine and announce closing dates to the public for any area in which the catch limits promulgated by NMFS are estimated to have been taken.
- (3) When the Commission has determined that a subquota under paragraph (8) of this section is estimated to have been taken, and has announced a date on which the season will close, no person shall sport fish for [Pacific](#) halibut in that area after that date for the rest of the year, unless a reopening of that area for sport halibut fishing is scheduled in accordance with the Catch Sharing Plan for [IPHC Regulatory Area 2A](#), or announced by the Commission.
- (4) In California, Oregon, or Washington, no person shall fillet, mutilate, or otherwise disfigure a [Pacific](#) halibut in any manner that prevents the determination of minimum size or the number of fish caught, possessed, or landed.
- (5) The possession limit on a vessel for [Pacific](#) halibut in the waters off the coast of Washington is the same as the daily bag limit. The possession limit for [Pacific](#) halibut on land in Washington is two daily bag limits.
- (6) The possession limit on a vessel for [Pacific](#) halibut caught in the waters off the coast of Oregon is the same as the daily bag limit. The possession limit for [Pacific](#) halibut on land in Oregon is three daily bag limits.
- (7) The possession limit on a vessel for [Pacific](#) halibut caught in the waters off the coast of California is one daily bag limit. The possession limit for [Pacific](#) halibut on land in California is one daily bag limit.
- (8) Specific regulations describing fishing periods, catch limits, fishing dates, and daily bag limits are promulgated by NMFS and published in the [Federal Register](#).

2728. Sport Fishing for [Pacific](#) Halibut—[IPHC Regulatory Area 2B](#)

- (1) In all waters off British Columbia: ^{9,10}

- (a) the sport fishing season will open on 1 February unless more restrictive regulations are in place;
 - (b) the sport fishing season will close when the sport catch limit allocated by DFO, is taken, or 31 December, whichever is earlier; and
 - (c) the daily bag limit is two [Pacific](#) halibut of any size per day per person.
- (2) In British Columbia, no person shall fillet, mutilate, or otherwise disfigure a [Pacific](#) halibut in any manner that prevents the determination of minimum size or the number of fish caught, possessed, or landed.
- (3) The possession limit for [Pacific](#) halibut in the waters off the coast of British Columbia is three [Pacific](#) halibut ^{9,10}.

⁹ DFO could implement more restrictive regulations for the sport fishery, therefore anglers are advised to check the current Federal or Provincial regulations prior to fishing.

¹⁰ For regulations on the experimental recreational fishery implemented by DFO check the current Federal or Provincial regulations.

2829. Sport Fishing for [Pacific](#) Halibut—[IPHC Regulatory Areas 2C, 3A, 3B, 4A, 4B, 4C, 4D, 4E](#)

- (1) In Convention waters in and off Alaska: ^{11,12}
- (a) The sport fishing season is from 1 February to 31 December.
 - (b) The daily bag limit is two [Pacific](#) halibut of any size per day per person unless a more restrictive bag limit applies in Commission regulations or Federal regulations at 50 CFR 300.65.
 - (c) No person may possess more than two daily bag limits.
 - (d) No person shall possess on board a vessel, including charter vessels and pleasure craft used for fishing, [Pacific](#) halibut that have been filleted, mutilated, or otherwise disfigured in any manner, except that each [Pacific](#) halibut may be cut into no more than 2 ventral pieces, 2 dorsal pieces, and 2 cheek pieces, with a patch of skin on ~~at~~each pieces, naturally attached.
 - (e) ~~Pacific~~ [Pacific](#) halibut in excess of the possession limit in paragraph (1)(c) of this section may be possessed on a vessel that does not contain sport fishing gear, fishing rods, hand lines, or gaffs.
 - (f) ~~All~~ [Pacific](#) halibut harvested on a charter vessel fishing trip in [IPHC Regulatory Areas 2C](#) or ~~Area~~ [3A](#) must be retained on board the charter vessel on which the [Pacific](#) halibut was caught until the end of the charter vessel fishing trip as defined at 50 CFR 300.61.
 - (g) Guided angler fish (GAF), as described at 50 CFR 300.65, may be used to allow a charter vessel angler to harvest additional [Pacific](#) halibut up to the limits in place for unguided anglers, and are exempt from the requirements in paragraphs (2) and (3) of this section.
- (2) For guided sport fishing (as referred to in 50 CFR 300.65) in [IPHC](#) Regulatory Area 2C:
- (a) The total allocation, including estimated harvest and ~~incidental discard~~ mortality (wastage), is 915,000 pounds (415.04 metric tons).

- (b) No person on board a charter vessel (as referred to in 50 CFR 300.65) shall catch and retain more than one [Pacific](#) halibut per calendar day.
 - (c) No person on board a charter vessel (as referred to in 50 CFR 300.65) shall catch and retain any [Pacific](#) halibut that with head on is greater than 44 inches (111.8 cm) and less than 80 inches (203.2 cm) as measured in a straight line, passing over the pectoral fin from the tip of the lower jaw with mouth closed, to the extreme end of the middle of the tail, ~~as illustrated in Figure 3.~~
- (3) For guided sport fishing (as referred to in 50 CFR 300.65) in [IPHC](#) Regulatory Area 3A:
- (a) The total allocation, including estimated harvest and ~~incidental discard~~ mortality (wastage), is 1,890,000 pounds (857.29 metric tons).
 - (b) No person on board a charter vessel (as referred to in 50 CFR 300.65) shall catch and retain more than two [Pacific](#) halibut per calendar day.
 - (c) At least one of the retained [Pacific](#) halibut must have a head-on length of no more than 28 inches (71.1 cm) as measured in a straight line, passing over the pectoral fin from the tip of the lower jaw with mouth closed, to the extreme end of the middle of the tail, ~~as illustrated in Figure 4.~~ If a person sport fishing on a charter vessel in [IPHC Regulatory Area 3A](#) retains only one [Pacific](#) halibut in a calendar day, that [Pacific](#) halibut may be of any length.
 - (d) A charter halibut permit (as referred to in 50 CFR 300.67) may only be used for one charter vessel fishing trip in which [Pacific](#) halibut are caught and retained per calendar day. A charter vessel fishing trip is defined at 50 CFR 300.61 as the time period between the first deployment of fishing gear into the water by a charter vessel angler (as defined at 50 CFR 300.61) and the offloading of one or more charter vessel anglers or any [Pacific](#) halibut from that vessel. For purposes of this trip limit, a charter vessel fishing trip ends at ~~11:2359 p.m.~~ (Alaska local time) on the same calendar day that the fishing trip began, or when any anglers or [Pacific](#) halibut are offloaded, whichever comes first.
 - (e) A charter vessel on which one or more anglers catch and retain [Pacific](#) halibut may only make one charter vessel fishing trip per calendar day. A charter vessel fishing trip is defined at 50 CFR 300.61 as the time period between the first deployment of fishing gear into the water by a charter vessel angler (as defined at 50 CFR 300.61) and the offloading of one or more charter vessel anglers or any [Pacific](#) halibut from that vessel. For purposes of this trip limit, a charter vessel fishing trip ends at ~~11:2359 p.m.~~ (Alaska local time) on the same calendar day that the fishing trip began, or when any anglers or [Pacific](#) halibut are offloaded, whichever comes first.
 - (f) No person on board a charter vessel may catch and retain [Pacific](#) halibut on any Wednesday, or on the following Tuesdays: ~~18-17~~ July, ~~25-24~~ July, and ~~1~~ August ~~31~~ July.
 - (g) Charter vessel anglers may catch and retain no more than four (4) [Pacific](#) halibut per calendar year on board charter vessels in [IPHC Regulatory Area 3A](#). ~~Pacific H~~halibut that are retained as GAF, retained while on a charter vessel fishing trip in other Commission regulatory areas, or retained while fishing without the services of a guide

Commented [SK3]: Deleting Figures 3 and 4 for 2018.

do not accrue toward the 4-fish annual limit. For purposes of enforcing the annual limit, each angler must:

- (1) maintain a nontransferable harvest record in the angler's possession if retaining a [Pacific](#) halibut for which an annual limit has been established. Such harvest record must be maintained either on the back of the angler's State of Alaska sport fishing license or on a Sport Fishing Harvest Record Card obtained, without charge, from ADF&G offices, the ADF&G website, or fishing license vendors; and
- (2) immediately upon retaining a [Pacific](#) halibut for which an annual limit has been established, record the date, location ([IPHC Regulatory Area 3A](#)), and species of the catch ([Pacific](#) halibut), in ink, on the harvest record; and
- (3) record the information required by paragraph 3(g)(2) on any duplicate or additional sport fishing license issued to the angler or any duplicate or additional Sport Fishing Harvest Record Card obtained by the angler for all [Pacific](#) halibut previously retained during that year that were subject to the harvest record reporting requirements of this section; and
- (4) carry the harvest record on his or her person while fishing for [Pacific](#) halibut.

¹¹ NMFS could implement more restrictive regulations for the sport fishery or components of it, therefore, anglers are advised to check the current Federal or State regulations prior to fishing.

¹² Charter vessels are prohibited from harvesting [Pacific](#) halibut in [IPHC Regulatory Areas 2C and 3A](#) during one charter vessel fishing trip under regulations promulgated by NMFS at 50 CFR 300.66.

~~2930~~. Previous Regulations Superseded

These Regulations shall supersede all previous regulations of the Commission, and these Regulations shall be effective each succeeding year until superseded.

~~PAUL RYALL~~[JAMES BALSIGER](#), Chairperson

~~JAMES BALSIGER~~[PAUL RYALL](#), Vice-Chairperson

ROBERT ALVERSON

TED ASSU

LINDA BEHNKEN

JAKE VANDERHEIDE

Published by the International Pacific Halibut Commission

**Summary of 2017-2018 U.S. Sport Recreational Halibut Regulations
for**

Commented [SK4]: Deleting this table for 2018

Washington, Oregon, and California (IPHC Area 2A)

Area	Description	Subquota (lb)	Dates	# Days/Week
Puget Sound WA	East of Sekiu River (WDFW Marine Areas 5-10)	64,962	4, 6, 11 May**	2 (TH, SA)
North Coast WA	Sekiu River mouth to Queets River (closed area SW of Cape Flattery) WDFW Marine Areas 3-4	115,500	4, 6, 11 May**	2 (TH, SA)
South Coast WA	Queets River to Leadbetter Point (WDFW Marine Area 2) — —All depths	48,307	4, 6, 11 May**	2 (TH, SA)
	Queets River to Leadbetter Point (WDFW Marine Area 2) — —Nearshore ^{3,2}	2,000	4, 6, 11 May**	2 (TH, SA)
Columbia Riv³ WA/OR	Leadbetter Point to Cape Falcon (WDFW Marine Area 1, OR) — —All depth fishery	12,299	1 May—30 Sep ¹	4 (TH—SU)
	Leadbetter Point to Cape Falcon (WDFW Marine Area 1, OR) — —Nearshore fishery ²	500	2 May—30 Sep ¹	3 (MO—WE)
Central Coast³ OR	Cape Falcon to Humbug Mt. —All depths —Spring fishery	151,172	11-13 May 18-20 May 1-3 Jun**	3 (TH—SA)
	Cape Falcon to Humbug Mt. —All depths —Summer fishery	60,203	4-5 Aug**	2 (FR—SA) Alternate weeks
	Cape Falcon to Humbug Mt. — —Nearshore fishery ⁴	28,897	1 Jun—31 Oct ¹	7 (MO—SU)
South Coast OR	South of Humbug Mt. to OR/CA border	10,039	1 May—31 Oct ¹	7 (MO—SU)
CA	All waters off California	34,580	TBD**	7 (MO—SU)

NOTE: For all areas, there is a daily bag limit of one (1) fish of any size unless otherwise noted.
 ** Dates and re-openings to be announced by IPHC (www.iphc.int) and NMFS (NMFS hotline (1-800-662-9825; #7; #1))
¹ Season open until ending date shown or until the subarea quota is attained, whichever occurs first.
² Restricted to waters inside the 30-fathom boundary line.

²Restrictions on groundfish retention apply in this area. Check state regulations.
⁴Restricted to waters inside the 40-fathom boundary line.

**Summary of Selected IPHC, Canadian, and U.S. Sport Recreational
Fishery Regulations for British Columbia and Alaskan areas
(as of 1 February 2017²⁰¹⁸)**

Commented [SK5]: Also deleting this table for 2018

Area	Season-Dates	Sector	Restrictions on Retained Halibut
Area 2B— —British Columbia	1 Feb—**		Daily bag limit is 1 fish. Max size of 133 cm. Possession limit is 2 fish; only one fish may be > 83 cm. An annual limit of 6 fish **
Area 2C— —Southeast AK²	1 Feb—31 Dec	Charter	Daily bag limit is 1 fish; only fish \leq 44 inches or \geq 80 inches¹ can be retained. Carcass must be retained if fish is filleted at sea.
		Private	Daily bag limit of 2 fish; no size restrictions
Area 3A— —Central Gulf³		Charter	Daily bag limit is 2 fish; max size of 28" on second fish¹. Carcass of \leq 28" halibut must be retained if filleted at sea. Annual limit of 4 halibut. One trip per charter halibut permit and per vessel per day. Closed all Wednesdays and 18 July, 25 July, and 1 August.
Area 3B— —Western Gulf²		All anglers	Daily bag limit of 2 fish; no size restrictions
Area 4— —Bering Sea²		All anglers	

^{**} These measures are more restrictive than section 27. Closing date, in-season changes to restrictions, and experimental recreational program regulations to be announced by DFO (www.pac.dfo-mpo.gc.ca/reefish).

¹ Size restriction is based on total (head-on) length. See illustrations, next page.

² Possession limit for all Alaskan areas is two daily bag limits.

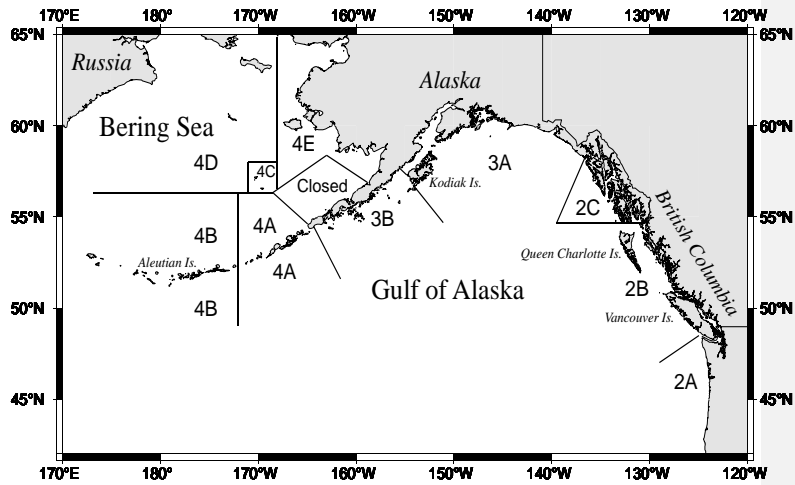
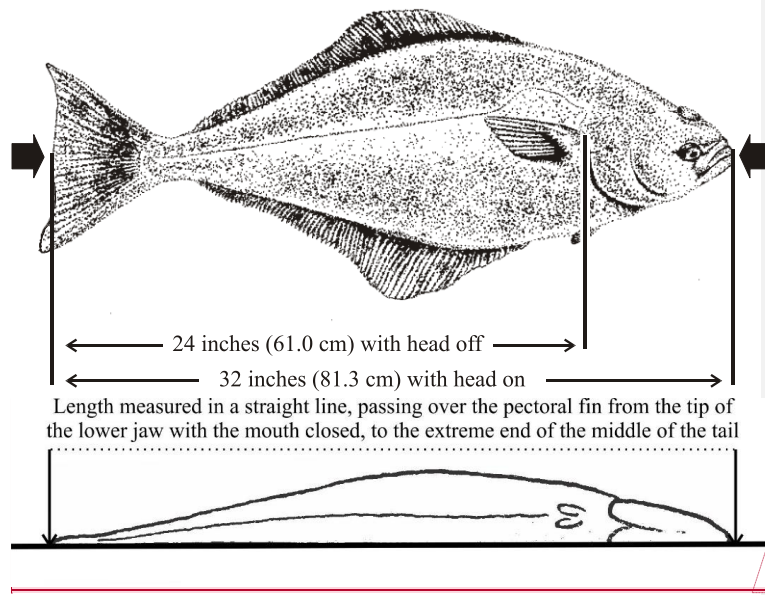


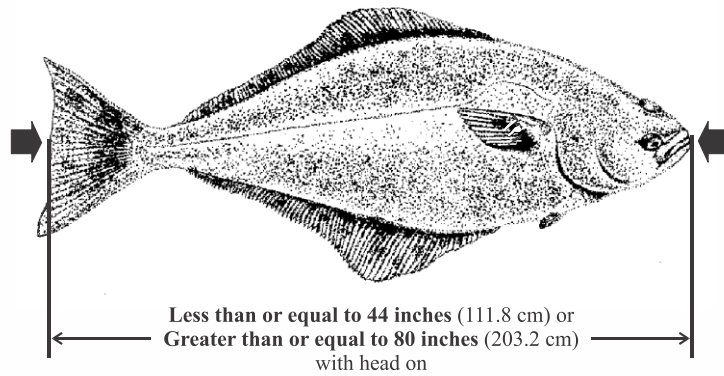
Figure 1. Regulatory areas for the Pacific halibut fishery.



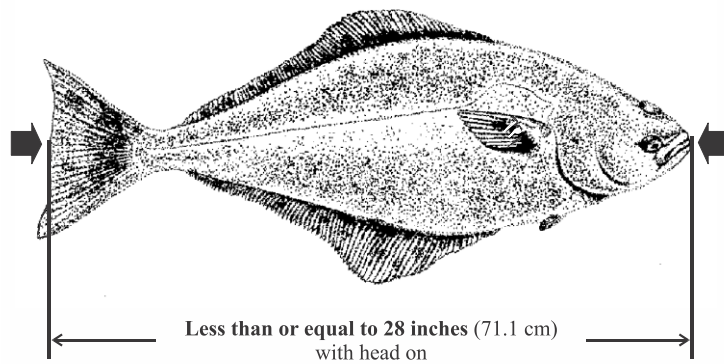
Commented [SK6]: Added second illustration to Figure 2 to better indicate straight-line measurement

Figure 2. Minimum commercial size.

Commented [SK7]: Deleting Figures 3 and 4 for 2018



~~Figure 3. Depiction of rRequired recreational size limit determination for Pacific halibut on board a charter vessel referred to in 50 CFR 300.65 and fishing in IPHC Regulatory Areas 2C and 3A (see Section 28 paragraph 2(e)).~~



~~Figure 4. Recreational maximum size limit for one fish in two fish bag limit for halibut on board a charter vessel referred to in 50 CFR 300.65 and~~

~~fishing in Regulatory Area 3A (see Section 28 paragraph 3(e)). If only one halibut is retained, it may be of any size.~~